

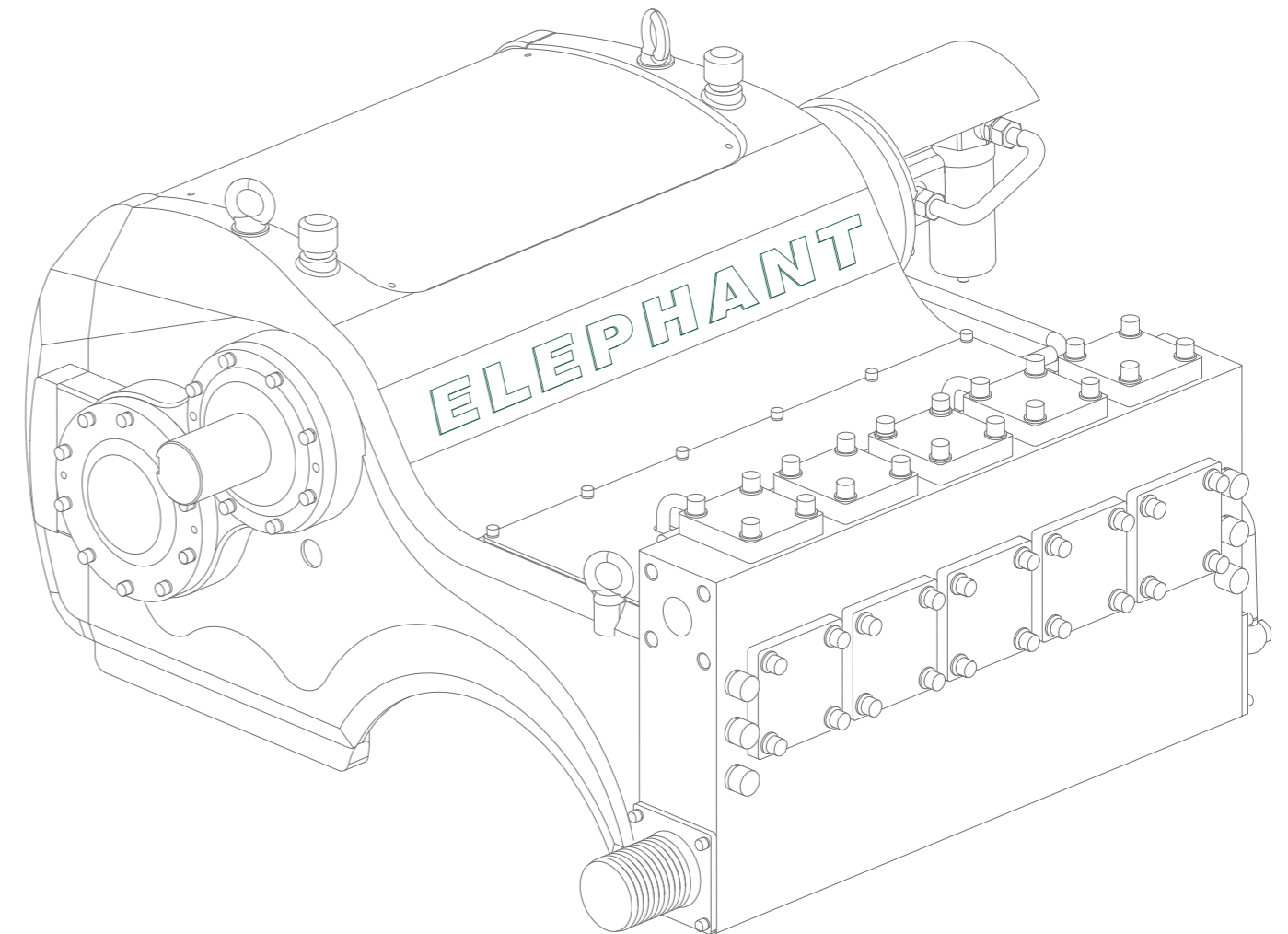
Disclaimer:

As technology is constantly updated, materials and technical specifications are subject to change without notice.
The supply status of the actual product shall be subject to the sales contract, and the sample is for reference only.



RECIPROCATING PUMPS

Convenient, Reliable, Efficient, Intelligent



ELEPHANT MACHINERY CO., LTD.

A : Factory Address

No. 58 Guanghua West Road, Jianhu County
Yancheng City, Jiangsu Province, China

T : +86-515-80603039

A : Sales Office

Room 909, Building 4, No.109 Software Avenue
Yuhuatai District, Nanjing City, Jiangsu Province, China

T : +86-25-52891797

W: www.elephantmudpump.com



Official Wechat



—
Contents

About Us P1-P2

Summary Table P3-P9

Specifications P10-P54

Accessories P55-P60



About Us

Reciprocating Pump for All Application Fields Integrates R&D, Manufacturing, Sales, and Service



Elephant Machinery Co., Ltd., established in 2008, covers an area of 30,000 square meters. We own multiple invention patents and have obtained certifications such as ISO 9001, ISO 14001, ISO 45001, and CE. We have been recognized as a national high-tech enterprise and a Jiangsu provincial specialized and new enterprise.

We specialize in reciprocating pumps, which are designed according to Chinese national standards such as GB/T9234-2018, as well as international standards such as API674 Third Edition and ISO13710:2004. The pumps can meet flow and pressure requirements in various application fields, including oilfield injection pumps, polymer injection pumps, booster pumps, pressure testing pumps, cementing pumps, coal mine sprayer pumps, hydraulic fracturing pumps, emulsion pumps, non-excavation and geological exploration mud pumps, grouting pumps, and ultra-high-pressure water jet cleaning pumps. These products are widely used in oilfield injection, polymer injection, boosting, pressure testing, cementing, non-excavation construction, mining, geological exploration, deep well and geothermal drilling, coal mine hydraulic fracturing, roadway support, sealing and grouting, tunnel drilling, and ultra-high-pressure water jet cleaning and other related fields.



Convenient, Reliable, Efficient, Intelligent

We will work hand in hand with friends from all walks of life to move towards a more brilliant future.

Our products come in the form of plunger pumps and piston pumps. They are powered by hydraulic motors, electric motors, and diesel engines and can achieve functions such as remote control, unmanned operation, monitoring alarms, and cloud-based storage of historical data. We employ international advanced production technology and utilizes its high-quality research and development team to adopt new technologies, materials, and processes to produce reciprocating pump products that are compact in structure, light in weight, small, and aesthetically pleasing, and easy to install and maintain, with the help of advanced processing and testing equipment. The products have the characteristics of high output pressure, long service life for vulnerable parts, and stable performance.

We have established a scientific research team in cooperation with famous domestic universities, continuously absorbing advanced international technologies, adhering to continuous innovation and actively exploring the new model of "Digital Elephants". We aim to achieve smart product design, automated production and manufacturing, and enterprise management informationization for empowering high-quality development of enterprises, and steadily move towards the goals of "high-end, intelligence, green, and internationalization".

We adhere to the concept of "product is the most important" and have always been committed to producing convenient, reliable, efficient, and intelligent reciprocating pump products for customers in various industries. We strictly control the quality of our products, providing high-quality reciprocating pump solutions to customers from all walks of life and have gained high recognition from many well-known domestic and foreign enterprises.

Expert in the Solution of Reciprocating Pumps for All Fields

1120kW
Maximum Power

6000LPM
Maximum Flow

280MPa
Maximum Pressure

We are committed to providing top-notch single pump and complete pump station solutions for global customers. Our reciprocating pumps cover a power range of up to 1120kW, with a maximum flow rate of 6000LPM and a pressure breakthrough of 280MPa. They can perfectly adapt to the diverse operational requirements of the oil and gas industry, including water injection, polymer injection, cementing, pressure testing, and crude oil circulation, covering a variety of application areas.

In the exploration of the application of reciprocating pumps, regardless of how the field is subdivided, customer demands always remain consistent: reliable and durable, easy to operate. We understand this well, listening to every customer's voice and integrating their needs into the design process, using ingenuity to create convenient, reliable, efficient, and intelligent reciprocating pump solutions.

We can provide customized solutions for customers based on our extensive industry experience and professional knowledge. We offer a variety of complete pump sets with different driving modes, including hydraulic motors, industrial frequency motors, variable frequency motors, permanent magnet motors, single and multiple-cylinder diesel engines. Our designs range from open to fully enclosed skid-mounted pump stations, and we can also develop new pump models to meet specific customer needs, ensuring that every solution is optimal and cost-effective.



When you choose our reciprocating pump, You choose:

Reliable

Exceed Standards: Designed in accordance with national standards such as GB/T9234-2018, as well as international standards such as API674 Third Edition, ISO13710:2004, and their quality and reliability meet or exceed industry standards.

Durable Spare Parts: Extend service life and reduce maintenance costs.

Convenient

Lightweight Design: Reduce transportation and installation burden.

Intelligent Operation: Simplify operation process and improve user experience.

Easy-to-Maintain Hydraulic End: Specially designed for easy maintenance.



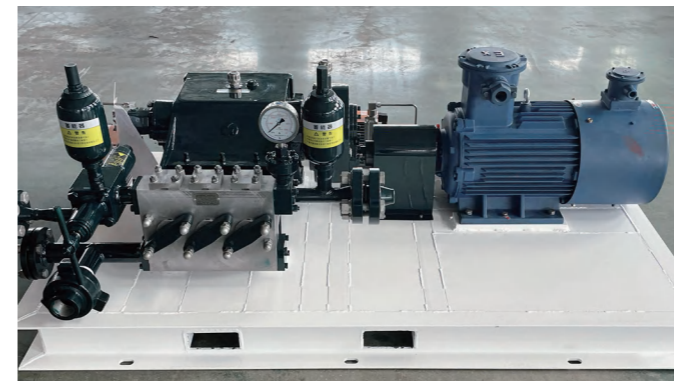
Intelligent

Intelligent System: Unmanned, with multi-terminal remote monitoring and real-time data synchronization. Remote start-stop, speed regulation, and data retrieval are all at your fingertips.

Efficient

High Efficiency: Mechanical efficiency 90%-95%, far superior to centrifugal pumps, and equally outstanding compared to similar reciprocating pumps.

Cost Savings and Energy Conservation: Helping sustainable development and reducing operating costs.



Summary Table

Page	Series	Model	Rated Pressure(PSI/MPa)	Continuous Duty	Intermittent Duty
10	DS20 16.6 / 20.9 HP	DS2004	10000 / 69	1.8 GPM / 6.8 LPM @ 475 RPM	2.3 GPM / 8.7 LPM @ 600 RPM
		DS2005	8800 / 61	2.9 GPM / 11.0 LPM @ 475 RPM	3.6 GPM / 13.6 LPM @ 600 RPM
		DS2006	6100 / 42	4.1 GPM / 15.5 LPM @ 475 RPM	5.2 GPM / 19.7 LPM @ 600 RPM
		DS2008	3400 / 23	7.3 GPM / 27.6 LPM @ 475 RPM	9.2 GPM / 34.8 LPM @ 600 RPM
		DS2010	2200 / 15	11.4 GPM / 43.1 LPM @ 475 RPM	14.3 GPM / 54.1 LPM @ 600 RPM
		DS2012	1500 / 10	16.3 GPM / 61.7 LPM @ 475 RPM	20.6 GPM / 78.0 LPM @ 600 RPM
		DS2014	1120 / 8	22.3 GPM / 84.4 LPM @ 475 RPM	28.1 GPM / 106.4 LPM @ 600 RPM
13	DS25 25 / 30 HP	DS2501	13420 / 93	2.7 GPM / 10.2 LPM @ 500 RPM	3.24 GPM / 12.3 LPM @ 600 RPM
		DS2502	7700 / 53	4.7 GPM / 17.8 LPM @ 500 RPM	5.64 GPM / 21.4 LPM @ 600 RPM
		DS2503	5940 / 41	6.1 GPM / 24.3 LPM @ 500 RPM	7.32 GPM / 27.7 LPM @ 600 RPM
		DS2504	4025 / 28	9 GPM / 34.1 LPM @ 500 RPM	10.8 GPM / 41 LPM @ 600 RPM
		DS2505	3045 / 21	11.9 GPM / 45 LPM @ 500 RPM	13.8 GPM / 52.3 LPM @ 600 RPM
16	DS45 34 / 45 HP	DS4506	10000 / 69	5.2 GPM / 19.7 LPM @ 450 RPM	6.9 GPM / 26.1 LPM @ 600 RPM
		DS4507	7400 / 51	7 GPM / 26.5 LPM @ 450 RPM	9.4 GPM / 35.6 LPM @ 600 RPM
		DS4508	5650 / 39	9.2 GPM / 34.8 LPM @ 450 RPM	12.2 GPM / 46.2 LPM @ 600 RPM
		DS4510	3620 / 25	14.4 GPM / 54.5 LPM @ 450 RPM	19.1 GPM / 72.3 LPM @ 600 RPM
		DS4512	2520 / 17	20.7 GPM / 78.3 LPM @ 450 RPM	27.5 GPM / 104.1 LPM @ 600 RPM
		DS4514	1850 / 13	28.1 GPM / 106.4 LPM @ 450 RPM	37.5 GPM / 141.9 LPM @ 600 RPM
		DS4516	1420 / 10	36.7 GPM / 138.9 LPM @ 450 RPM	49 GPM / 185.5 LPM @ 600 RPM
		DS4518	1120 / 8	46.5 GPM / 176 LPM @ 450 RPM	62 GPM / 234.7 LPM @ 600 RPM
19	DS77 62 / 77 HP	DS7707	10000 / 69	9.4 GPM / 35.6 LPM @ 400 RPM	11.7 GPM / 44.3 LPM @ 500 RPM
		DS7708	7600 / 52	12.2 GPM / 46.2 LPM @ 400 RPM	15.3 GPM / 57.9 LPM @ 500 RPM
		DS7710	4900 / 34	19.1 GPM / 72.3 LPM @ 400 RPM	23.9 GPM / 90.5 LPM @ 500 RPM
		DS7712	3400 / 23	27.5 GPM / 104.1 LPM @ 400 RPM	34.4 GPM / 130.2 LPM @ 500 RPM
		DS7714	2500 / 17	37.5 GPM / 141.9 LPM @ 400 RPM	46.9 GPM / 177.5 LPM @ 500 RPM
		DS7716	1900 / 13	49 GPM / 185.5 LPM @ 400 RPM	61.2 GPM / 231.6 LPM @ 500 RPM
		DS7718	1500 / 10	62 GPM / 234.7 LPM @ 400 RPM	77.5 GPM / 293.3 LPM @ 500 RPM
		DS7720	1250 / 9	76.5 GPM / 289.6 LPM @ 400 RPM	95.6 GPM / 361.8 LPM @ 500 RPM
		DS7722	1000 / 7	92.6 GPM / 350.5 LPM @ 400 RPM	116 GPM / 439.1 LPM @ 500 RPM
		DS7724	850 / 6	110 GPM / 416.4 LPM @ 400 RPM	138 GPM / 522.3 LPM @ 500 RPM
22	DS70 74 / 100 HP	DS7001	40600 / 280	2.34 GPM / 8.9 LPM @ 350 RPM	2.7 GPM / 10.2 LPM @ 400 RPM
		DS7002	31900 / 220	3.15 GPM / 12 LPM @ 350 RPM	3.42 GPM / 13 LPM @ 400 RPM
		DS7003	26100 / 180	3.9 GPM / 14.8 LPM @ 350 RPM	4.2 GPM / 16 LPM @ 400 RPM
		DS7004	21750 / 150	4.4 GPM / 16.7 LPM @ 350 RPM	5.04 GPM / 19.1 LPM @ 400 RPM
		DS7005	17400 / 120	5.6 GPM / 21.2 LPM @ 350 RPM	6.3 GPM / 23.9 LPM @ 400 RPM

Page	Series	Model	Rated Pressure(PSI/MPa)	Continuous Duty	Intermittent Duty
22		DS7006	13050 / 90	5.6 GPM / 27.3 LPM @ 350 RPM	8.4 GPM / 31.8 LPM @ 400 RPM
25	DS104 88/104 HP	DS10408	10000 / 69	14.3 GPM / 54.1 LPM @ 400 RPM	15.2 GPM / 57.5 LPM @ 425 RPM
		DS10410	6500 / 45	22.3 GPM / 84.4 LPM @ 400 RPM	23.7 GPM / 89.7 LPM @ 425 RPM
		DS10412	4500 / 31	32.1 GPM / 121.5 LPM @ 400 RPM	34.1 GPM / 129.1 LPM @ 425 RPM
		DS10414	3300 / 23	43.7 GPM / 165.4 LPM @ 400 RPM	46.5 GPM / 176 LPM @ 425 RPM
		DS10416	2500 / 17	57.1 GPM / 216.1 LPM @ 400 RPM	60.7 GPM / 229.7 LPM @ 425 RPM
		DS10418	2000 / 14	72.3 GPM / 273.7 LPM @ 400 RPM	76.8 GPM / 290.7 LPM @ 425 RPM
		DS10420	1600 / 11	89.2 GPM / 337.6 LPM @ 400 RPM	94.8 GPM / 358.8 LPM @ 425 RPM
		DS10422	1350 / 9	108 GPM / 408.8 LPM @ 400 RPM	115 GPM / 435.3 LPM @ 425 RPM
		DS10424	1150 / 8	129 GPM / 488.3 LPM @ 400 RPM	137 GPM / 518.5 LPM @ 425 RPM
		DS10426	1000 / 7	151 GPM / 571.5 LPM @ 400 RPM	160 GPM / 605.6 LPM @ 425 RPM
		DS10428	825 / 6	175 GPM / 662.4 LPM @ 400 RPM	186 GPM / 704 LPM @ 425 RPM
		DS10430	725 / 5	201 GPM / 760.8 LPM @ 400 RPM	213 GPM / 806.2 LPM @ 425 RPM
		28	DS108 84 / 108 HP	DS10432	650 / 4
DS10808	10060 / 69			12.8 GPM / 48.4 LPM @ 387 RPM	16.6 GPM / 62.8 LPM @ 500 RPM
DS10810	6450 / 44			20 GPM / 75.7 LPM @ 387 RPM	25.9 GPM / 98 LPM @ 500 RPM
DS10812	4470 / 31			28.9 GPM / 109.4 LPM @ 387 RPM	37.3 GPM / 141.2 LPM @ 500 RPM
DS10814	3280 / 23			39.3 GPM / 148.8 LPM @ 387 RPM	50.8 GPM / 192.3 LPM @ 500 RPM
DS10816	2500 / 17			51.3 GPM / 194.2 LPM @ 387 RPM	66.3 GPM / 250.9 LPM @ 500 RPM
DS10818	2000 / 14			65 GPM / 246 LPM @ 387 RPM	83.9 GPM / 317.6 LPM @ 500 RPM
DS10820	1600 / 11			80.2 GPM / 303.6 LPM @ 387 RPM	103.6 GPM / 392.1 LPM @ 500 RPM
DS10822	1330 / 9			97 GPM / 367.1 LPM @ 387 RPM	125.4 GPM / 474.6 LPM @ 500 RPM
DS10824	1120 / 8			115.5 GPM / 437.2 LPM @ 387 RPM	149.2 GPM / 564.7 LPM @ 500 RPM
31	DS142 117 / 142 HP	DS10826	950 / 7	135.5 GPM / 512.9 LPM @ 387 RPM	175.1 GPM / 662.8 LPM @ 500 RPM
		DS14209	10000 / 69	18.1 GPM / 68.5 LPM @ 350 RPM	21.9 GPM / 82.9 LPM @ 425 RPM
		DS14210	8000 / 55	22.3 GPM / 84.4 LPM @ 350 RPM	27.1 GPM / 102.6 LPM @ 425 RPM
		DS14212	5500 / 38	32.1 GPM / 121.5 LPM @ 350 RPM	39 GPM / 147.6 LPM @ 425 RPM
		DS14214	4065 / 28	43.7 GPM / 165.4 LPM @ 350 RPM	53.1 GPM / 201 LPM @ 425 RPM
		DS14216	3115 / 21	57.1 GPM / 216.1 LPM @ 350 RPM	69.4 GPM / 262.7 LPM @ 425 RPM
		DS14218	2460 / 17	72.3 GPM / 273.7 LPM @ 350 RPM	87.8 GPM / 332.3 LPM @ 425 RPM
		DS14220	1990 / 14	89.3 GPM / 338 LPM @ 350 RPM	108 GPM / 408.8 LPM @ 425 RPM
		DS14222	1650 / 11	108 GPM / 408.8 LPM @ 350 RPM	131 GPM / 495.8 LPM @ 425 RPM
		DS14224	1385 / 10	128 GPM / 484.5 LPM @ 350 RPM	156 GPM / 590.5 LPM @ 425 RPM
		DS14226	1180 / 8	151 GPM / 571.5 LPM @ 350 RPM	183 GPM / 692.7 LPM @ 425 RPM
		DS14228	1015 / 7	175 GPM / 662.4 LPM @ 350 RPM	212 GPM / 802.4 LPM @ 425 RPM
31	DS14230	DS14230	885 / 6	201 GPM / 760.8 LPM @ 350 RPM	244 GPM / 923.5 LPM @ 425 RPM
		DS14232	775 / 5	228 GPM / 863 LPM @ 350 RPM	277 GPM / 1048.5 LPM @ 425 RPM

Summary Table

Page	Series	Model	Rated Pressure(PSI/MPa)	Continuous Duty	Intermittent Duty
31	DS142 117 / 142 HP	DS14234	650 / 4	258 GPM / 976.5 LPM @ 350 RPM	313 GPM / 1184.7 LPM @ 425 RPM
		DS14236	570 / 4	289 GPM / 1093.9 LPM @ 350 RPM	351 GPM / 1328.5 LPM @ 425 RPM
34	DS190 150/190 HP	DS19010	9800 / 68	24 GPM / 90.8 LPM @ 330 RPM	29 GPM / 109.8 LPM @ 400 RPM
		DS19012	6800 / 47	34 GPM / 128.7 LPM @ 330 RPM	41 GPM / 155.2 LPM @ 400 RPM
		DS19014	5000 / 34	46 GPM / 174.1 LPM @ 330 RPM	56 GPM / 212 LPM @ 400 RPM
		DS19016	3800 / 26	61 GPM / 230.9 LPM @ 330 RPM	73 GPM / 276.3 LPM @ 400 RPM
		DS19018	3000 / 21	77 GPM / 291.4 LPM @ 330 RPM	93 GPM / 352 LPM @ 400 RPM
		DS19020	2400 / 17	95 GPM / 359.6 LPM @ 330 RPM	115 GPM / 435.3 LPM @ 400 RPM
		DS19022	2000 / 14	115 GPM / 435.3 LPM @ 330 RPM	139 GPM / 526.1 LPM @ 400 RPM
		DS19024	1700 / 12	136 GPM / 514.8 LPM @ 330 RPM	165 GPM / 624.5 LPM @ 400 RPM
		DS19026	1480 / 10	160 GPM / 605.6 LPM @ 330 RPM	194 GPM / 734.3 LPM @ 400 RPM
		DS19028	1200 / 8	186 GPM / 704 LPM @ 330 RPM	225 GPM / 851.6 LPM @ 400 RPM
		DS19030	1100 / 8	213 GPM / 806.2 LPM @ 330 RPM	258 GPM / 976.5 LPM @ 400 RPM
		DS19032	1000 / 7	242 GPM / 916 LPM @ 330 RPM	294 GPM / 1112.8 LPM @ 400 RPM
		DS19034	800 / 6	274 GPM / 1037.1 LPM @ 330 RPM	332 GPM / 1256.6 LPM @ 400 RPM
		DS19036	750 / 5	307 GPM / 1162 LPM @ 330 RPM	372 GPM / 1408 LPM @ 400 RPM
37	DW240 198 / 240 HP	DW24009	10000 / 69	30 GPM / 113.6 LPM @ 350 RPM	37 GPM / 140 LPM @ 425 RPM
		DW24010	8150 / 56	37 GPM / 140 LPM @ 350 RPM	45 GPM / 170.3 LPM @ 425 RPM
		DW24012	5650 / 39	54 GPM / 204.4 LPM @ 350 RPM	65 GPM / 246 LPM @ 425 RPM
		DW24014	4160 / 29	73 GPM / 276.3 LPM @ 350 RPM	89 GPM / 336.9 LPM @ 425 RPM
		DW24016	3190 / 22	95 GPM / 359.6 LPM @ 350 RPM	116 GPM / 439.1 LPM @ 425 RPM
		DW24018	2520 / 17	121 GPM / 458 LPM @ 350 RPM	146 GPM / 552.6 LPM @ 425 RPM
		DW24020	2040 / 14	149 GPM / 564 LPM @ 350 RPM	181 GPM / 685.1 LPM @ 425 RPM
		DW24022	1690 / 12	180 GPM / 681.3 LPM @ 350 RPM	219 GPM / 828.9 LPM @ 425 RPM
		DW24024	1420 / 10	214 GPM / 810 LPM @ 350 RPM	260 GPM / 984.1 LPM @ 425 RPM
		DW24026	1210 / 8	251 GPM / 950 LPM @ 350 RPM	305 GPM / 1154.4 LPM @ 425 RPM
		DW24028	1040 / 7	292 GPM / 1105.2 LPM @ 350 RPM	354 GPM / 1339.9 LPM @ 425 RPM
		DW24030	910 / 6	335 GPM / 1268 LPM @ 350 RPM	406 GPM / 1536.7 LPM @ 425 RPM
		DW24032	800 / 6	381 GPM / 1442.1 LPM @ 350 RPM	462 GPM / 1748.7 LPM @ 425 RPM
		DW24034	710 / 5	430 GPM / 1627.6 LPM @ 350 RPM	522 GPM / 1975.8 LPM @ 425 RPM
DW24036	630 / 4	482 GPM / 1824.4 LPM @ 350 RPM	585 GPM / 2214.2 LPM @ 425 RPM		
40	DW325 265 / 325 HP	DW32511	8400 / 58	48 GPM / 181.7 LPM @ 330 RPM	58 GPM / 219.5 LPM @ 400 RPM
		DW32512	7100 / 49	57 GPM / 215.7 LPM @ 330 RPM	69 GPM / 261.2 LPM @ 400 RPM
		DW32514	5200 / 36	77 GPM / 291.4 LPM @ 330 RPM	94 GPM / 355.8 LPM @ 400 RPM
		DW32516	4000 / 28	101 GPM / 382.3 LPM @ 330 RPM	122 GPM / 461.8 LPM @ 400 RPM
		DW32518	3100 / 21	128 GPM / 484.5 LPM @ 330 RPM	155 GPM / 586.7 LPM @ 400 RPM
		DW32520	2500 / 17	158 GPM / 598 LPM @ 330 RPM	191 GPM / 722.9 LPM @ 400 RPM

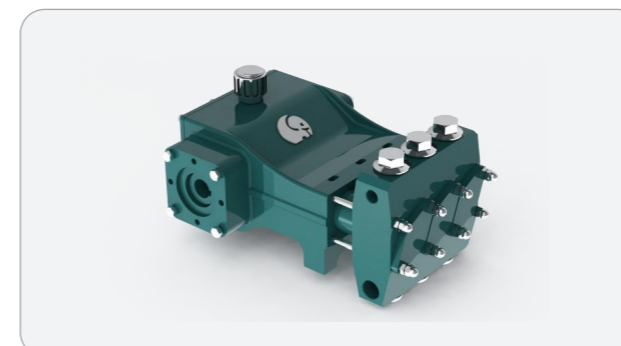
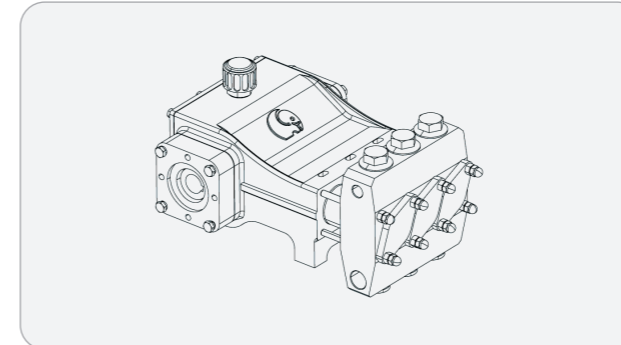
Page	Series	Model	Rated Pressure(PSI/MPa)	Continuous Duty	Intermittent Duty		
34	DW325 265 / 325 HP	DW32522	2100 / 14	191 GPM / 722.9 LPM @ 330 RPM	231 GPM / 874.3 LPM @ 400 RPM		
		DW32524	1800 / 12	227 GPM / 859.2 LPM @ 330 RPM	275 GPM / 1040.9 LPM @ 400 RPM		
		DW32526	1500 / 10	267 GPM / 1010.6 LPM @ 330 RPM	323 GPM / 1222.6 LPM @ 400 RPM		
		DW32528	1300 / 9	309 GPM / 1169.6 LPM @ 330 RPM	375 GPM / 1419.4 LPM @ 400 RPM		
		DW32530	1100 / 8	355 GPM / 1343.7 LPM @ 330 RPM	430 GPM / 1627.6 LPM @ 400 RPM		
		DW32532	1000 / 7	404 GPM / 1529.1 LPM @ 330 RPM	490 GPM / 1854.7 LPM @ 400 RPM		
		DW32534	900 / 6	456 GPM / 1726 LPM @ 330 RPM	553 GPM / 2093.1 LPM @ 400 RPM		
		DW32536	800 / 6	511 GPM / 1934.1 LPM @ 330 RPM	620 GPM / 2346.7 LPM @ 400 RPM		
43	DS440 350/440 HP	DS44012	10000 / 69	39 GPM / 147.6 LPM @ 240 RPM	48 GPM / 181.7 LPM @ 300 RPM		
		DS44014	10000 / 69	53 GPM / 200.6 LPM @ 240 RPM	66 GPM / 249.8 LPM @ 300 RPM		
		DS44016	7960 / 55	69 GPM / 261.2 LPM @ 240 RPM	86 GPM / 325.5 LPM @ 300 RPM		
		DS44018	6300 / 43	87 GPM / 329.3 LPM @ 240 RPM	109 GPM / 412.6 LPM @ 300 RPM		
		DS44020	5100 / 35	107 GPM / 405 LPM @ 240 RPM	134 GPM / 507.2 LPM @ 300 RPM		
		DS44022	4200 / 29	130 GPM / 492.1 LPM @ 240 RPM	162 GPM / 613.2 LPM @ 300 RPM		
		DS44024	3540 / 24	154 GPM / 582.9 LPM @ 240 RPM	193 GPM / 730.5 LPM @ 300 RPM		
		DS44026	3015 / 21	181 GPM / 685.1 LPM @ 240 RPM	226 GPM / 855.4 LPM @ 300 RPM		
		DS44028	2600 / 18	210 GPM / 794.9 LPM @ 240 RPM	262 GPM / 991.7 LPM @ 300 RPM		
		DS44030	2260 / 16	241 GPM / 912.2 LPM @ 240 RPM	301 GPM / 1139.3 LPM @ 300 RPM		
		DS44032	1990 / 14	274 GPM / 1037.1 LPM @ 240 RPM	343 GPM / 1298.3 LPM @ 300 RPM		
		DS44034	1760 / 12	310 GPM / 1173.4 LPM @ 240 RPM	387 GPM / 1464.8 LPM @ 300 RPM		
		DS44036	1570 / 11	347 GPM / 1313.4 LPM @ 240 RPM	434 GPM / 1642.7 LPM @ 300 RPM		
		DS44038	1400 / 10	387 GPM / 1464.8 LPM @ 240 RPM	483 GPM / 1828.2 LPM @ 300 RPM		
DS44040	1275 / 9	422 GPM / 1597.3 LPM @ 240 RPM	527 GPM / 1994.7 LPM @ 300 RPM				
46	DW400 422 / 500 HP	DW40001	7250 / 50	70 GPM / 265.3 LPM @ 350 RPM	80 GPM / 303.2 LPM @ 400 RPM		
		DW40002	5920 / 41	86 GPM / 325.9 LPM @ 350 RPM	98 GPM / 371.4 LPM @ 400 RPM		
		DW40003	4880 / 34	104 GPM / 394.2 LPM @ 350 RPM	119 GPM / 451 LPM @ 400 RPM		
		DW40004	4090 / 28	124 GPM / 470 LPM @ 350 RPM	142 GPM / 538.2 LPM @ 400 RPM		
		DW40005	3490 / 24	146 GPM / 553.3 LPM @ 350 RPM	166 GPM / 629 LPM @ 400 RPM		
		DW40006	3000 / 21	169 GPM / 640.5 LPM @ 350 RPM	193 GPM / 732 LPM @ 400 RPM		
		49	DW800 650 / 800 HP	DW80014	10000 / 69	87 GPM / 329.3 LPM @ 240 RPM	109 GPM / 412.6 LPM @ 300 RPM
				DW80016	8750 / 60	114 GPM / 431.5 LPM @ 240 RPM	143 GPM / 541.3 LPM @ 300 RPM
DW80018	6920 / 48			145 GPM / 548.8 LPM @ 240 RPM	181 GPM / 685.1 LPM @ 300 RPM		

Summary Table

Page	Series	Model	Rated Pressure(PSI/MPa)	Continuous Duty	Intermittent Duty
49	DW800 650 / 800 HP	DW80020	1200/8	186 GPM / 704LPM @ 330RPM	225 GPM / 851.6LPM @ 400RPM
		DW80022	1100/8	213 GPM / 806.2LPM @ 330RPM	258 GPM / 976.5LPM @ 400RPM
		DW80024	1000/7	242 GPM / 916LPM @ 330RPM	294 GPM / 1112.8LPM @ 400RPM
		DW80026	800/6	274 GPM / 1037.1LPM @ 330RPM	332 GPM / 1256.6LPM @ 400RPM
		DW80028	750/5	307 GPM / 1162LPM @ 330RPM	372 GPM / 1408LPM @ 400RPM
		DW80030	10000/69	30 GPM / 113.6LPM @ 350RPM	37 GPM / 140LPM @ 425RPM
		DW80032	8150/56	37 GPM / 140LPM @ 350RPM	45 GPM / 170.3LPM @ 425RPM
		DW80034	5650/39	54 GPM / 204.4LPM @ 350RPM	65 GPM / 246LPM @ 425RPM
		DW80036	4160/29	73 GPM / 276.3LPM @ 350RPM	89 GPM / 336.9LPM @ 425RPM
		DW80038	3190/22	95 GPM / 359.6LPM @ 350RPM	116 GPM / 439.1LPM @ 425RPM
		DW80040	2520/17	121 GPM / 458LPM @ 350RPM	146 GPM / 552.6LPM @ 425RPM
		DW80042	2040/14	149 GPM / 564LPM @ 350RPM	181 GPM / 685.1LPM @ 425RPM
		DW80044	1690/12	180 GPM / 681.3LPM @ 350RPM	219 GPM / 828.9LPM @ 425RPM
		DW80046	1420/10	214 GPM / 810LPM @ 350RPM	260 GPM / 984.1LPM @ 425RPM
		DW80048	1210/8	251 GPM / 950LPM @ 350RPM	305 GPM / 1154.4LPM @ 425RPM
		DW80050	1040/7	292 GPM / 1105.2LPM @ 350RPM	354 GPM / 1339.9LPM @ 425RPM
		52	DW1000 700 / 1000 HP	DW100014	910/6
DW100016	800/6			381 GPM / 1442.1LPM @ 350RPM	462 GPM / 1748.7LPM @ 425RPM
DW100018	710/5			430 GPM / 1627.6LPM @ 350RPM	522 GPM / 1975.8LPM @ 425RPM
DW100020	630/4			482 GPM / 1824.4LPM @ 350RPM	585 GPM / 2214.2LPM @ 425RPM
DW100022	8400/58			48 GPM / 181.7LPM @ 330RPM	58 GPM / 219.5LPM @ 400RPM
DW100024	7100/49			57 GPM / 215.7LPM @ 330RPM	69 GPM / 261.2LPM @ 400RPM
DW100026	5200/36			77 GPM / 291.4LPM @ 330RPM	94 GPM / 355.8LPM @ 400RPM
DW100027	4000/28			101 GPM / 382.3LPM @ 330RPM	122 GPM / 461.8LPM @ 400RPM
DW100028	3100/21			128 GPM / 484.5LPM @ 330RPM	155 GPM / 586.7LPM @ 400RPM
DW100030	2500/17			158 GPM / 598LPM @ 330RPM	191 GPM / 722.9LPM @ 400RPM
DW100032	2100/14			191 GPM / 722.9LPM @ 330RPM	231 GPM / 874.3LPM @ 400RPM
DW100034	1800/12			227 GPM / 859.2LPM @ 330RPM	275 GPM / 1040.9LPM @ 400RPM
DW100036	1500/10			267 GPM / 1010.6LPM @ 330RPM	323 GPM / 1222.6LPM @ 400RPM
DW100037	1300/9			309 GPM / 1169.6LPM @ 330RPM	375 GPM / 1419.4LPM @ 400RPM
DW100038	1100/8			355 GPM / 1343.7LPM @ 330RPM	430 GPM / 1627.6LPM @ 400RPM
DW100040	1000/7			404 GPM / 1529.1LPM @ 330RPM	490 GPM / 1854.7LPM @ 400RPM
DW100042	900/6			456 GPM / 1726LPM @ 330RPM	553 GPM / 2093.1LPM @ 400RPM
DW100044	800/6	511 GPM / 1934.1LPM @ 330RPM	620 GPM / 2346.7LPM @ 400RPM		
DW100046	10000/69	39 GPM / 147.6LPM @ 240RPM	48 GPM / 181.7LPM @ 300RPM		
DW100048	10000/69	53 GPM / 200.6LPM @ 240RPM	66 GPM / 249.8LPM @ 300RPM		
DW100050	7960/55	69 GPM / 261.2LPM @ 240RPM	86 GPM / 325.5LPM @ 300RPM		

DS20

Specifications



Design Standard	API-674, Third Edition
Configuration	Horizontal Triplex Plunger
Number of Plungers	3
Continuous Duty	16.6 BHP
Intermittent Duty	20.9 BHP
Stroke Length	1.5 Inches/38.1mm
Frame Load Rating	2,700 lbs/1244.7kg
Pump Weight (Average)	245 lbs/111.13kg
Intermittent Duty Speed Rating	600 RPM
Continuous Duty Speed Rating	475 RPM
Minimum Speed	100 RPM
Mechanical Efficiency	90%
Lubrication System	Splash, Gravity Return
Lubrication System (Optional)	Pressurized
Crankcase Oil Capacity	2 Gallons/7.57L
Lube Oil Type	SAE 30
Fluid Temperature Range	-20 to 350 °F / -28~176°C
Valve Type	Disc Valve / Wear-resistant Valve

Performance Data (Metric)

Pump Model	Plunger Diameter (mm)	Displacement (L/REV)	Maximum Pressure (MPa)	Pump Capacity (LPM)@Input Speed (RPM)						
				100	200	300	400	475	500	600
DS2004	13	0.0144	69	1.5	3.0	4.2	5.7	6.8	7.2	8.7
DS2005	16	0.0227	61	2.3	4.5	6.8	9.1	11.0	11.4	13.6
DS2006	19	0.0326	42	3.4	6.4	9.8	12.9	15.5	16.3	19.7
DS2008	25	0.0579	23	5.7	11.7	17.4	23.1	27.6	29.1	34.8
DS2010	32	0.0905	15	9.1	18.2	27.3	36.3	43.1	45.4	54.1
DS2012	38	0.1302	10	12.9	26.1	39.0	52.2	61.7	65.1	78.0
DS2014	44	0.1775	8	17.8	35.6	53.4	71.2	84.4	88.9	106.4
DS2015	48	0.2036	7	20.4	40.9	60.9	81.4	96.9	101.8	122.3

DS20

Performance Data

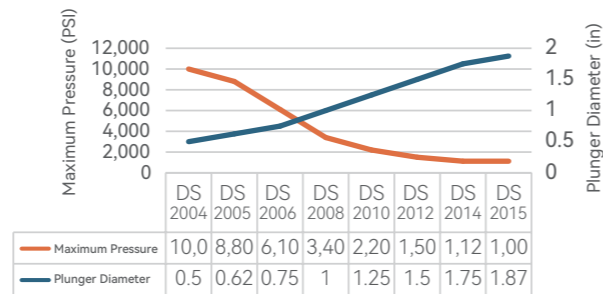
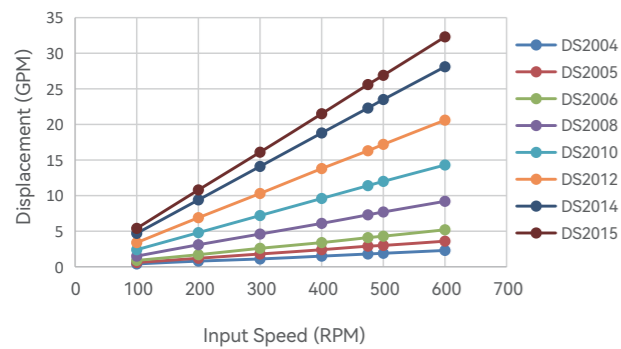
Pump Model	Plunger Diameter (in)	Displacement (GAL/REV)	Maximum Pressure (PSI)	Pump Capacity (GPM)@Input Speed (RPM)						
				100	200	300	400	475	500	600
DS2004	0.5	0.0038	10,000	0.4	0.8	1.1	1.5	1.8	1.9	2.3
DS2005	0.625	0.006	8,800	0.6	1.2	1.8	2.4	2.9	3	3.6
DS2006	0.75	0.0086	6,100	0.9	1.7	2.6	3.4	4.1	4.3	5.2
DS2008	1	0.0153	3,400	1.5	3.1	4.6	6.1	7.3	7.7	9.2
DS2010	1.25	0.0239	2,200	2.4	4.8	7.2	9.6	11.4	12	14.3
DS2012	1.5	0.0344	1,500	3.4	6.9	10.3	13.8	16.3	17.2	20.6
DS2014	1.75	0.0469	1,120	4.7	9.4	14.1	18.8	22.3	23.5	28.1
DS2015	1.875	0.0538	1,000	5.4	10.8	16.1	21.5	25.6	26.9	32.3

Standard connection sizes

Pump Model	Suction (in)	Discharge (in)
DS2004-DS2007	1.5	0.75
DS2008-DS2015	1.5	1.0
DS2008-DS2015	2.0	1.5

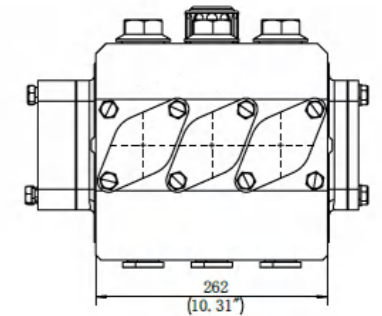
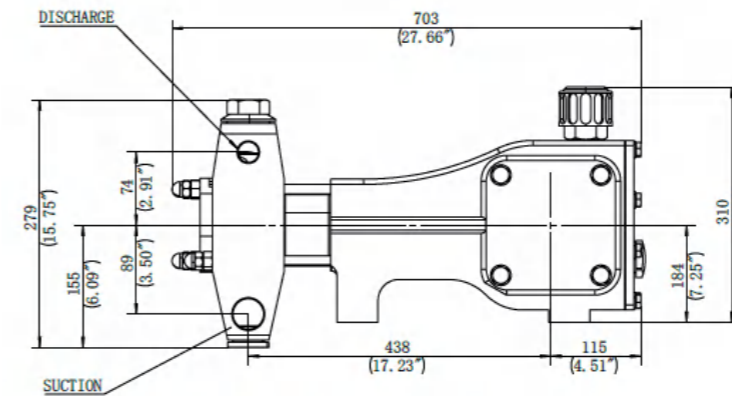
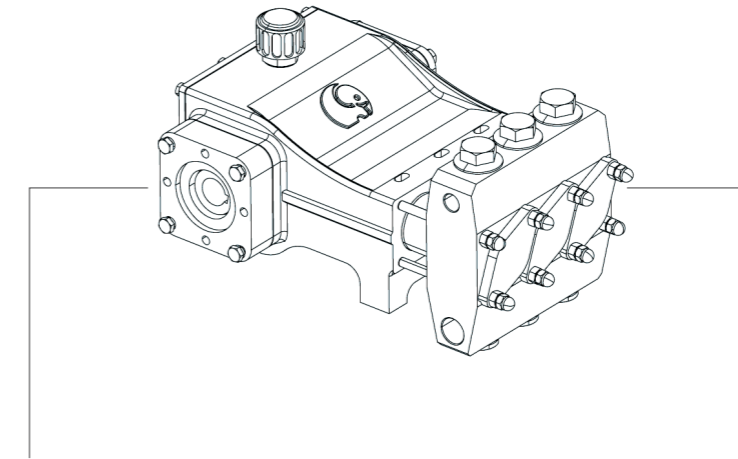
Fluid cylinder materials

Fluid cylinder materials	Cast
Carbon Steel	Ductile Iron
Fluid cylinder materials	
304 / 316L / 17-4PH / 2205 / 2507 Stainless Steel	

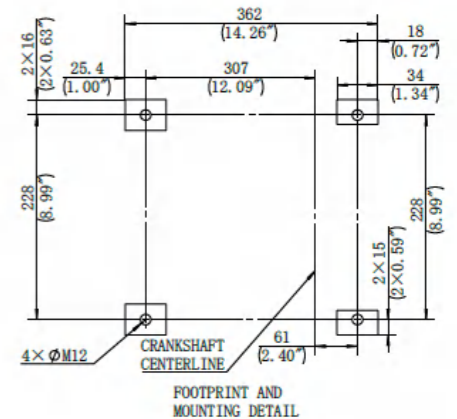
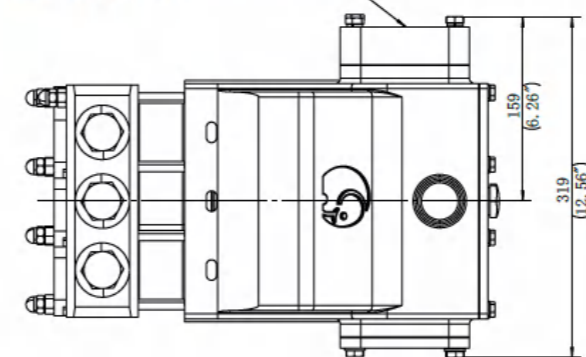


DS20

Engineering dimensional outline

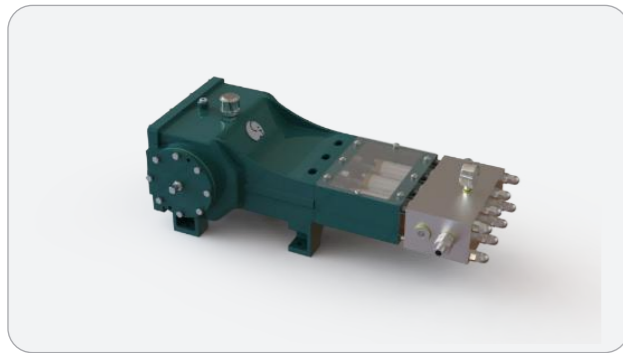
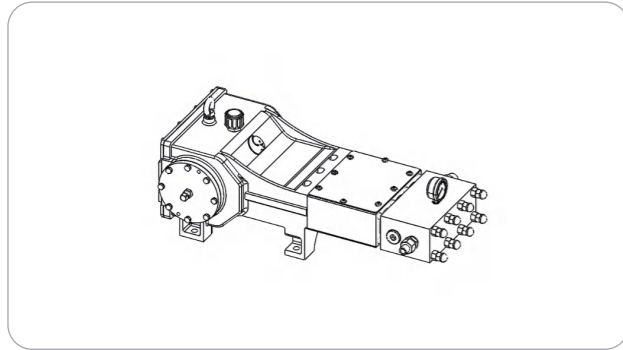


THE INPUT SHAFT CAN BE CUSTOMIZED IF IT IS AN EXTENDED SHAFT END



DS25

Specifications



Design Standard	API-674, Third Edition
Configuration	Horizontal Triplex Plunger
Number of Plungers	3
Continuous Duty	25 BHP
Intermittent Duty	30 BHP
Stroke Length	2.4 Inches / 60 mm
Frame Load Rating	2288 lbs / 1040 kg
Pump Weight (Average)	4400 lbs / 200 kg
Intermittent Duty Speed	600 RPM
Rating	500 RPM
Continuous Duty Speed Rating	100 RPM
Minimum Speed	90%
Mechanical Efficiency	Splash, Gravity Return
Lubrication System	38 Gallons / 143.83 L
Crankcase Oil Capacity	SAE30
Lube Oil Type	-20 to 350 °F / -28~176°C
Fluid Temperature Range	Disc Valve / Wear-resistant
Valve Type	Valve

Performance Data (Metric)

Pump Model	Plunger Diameter (mm)	Displacement (L/REV)	Maximum Pressure (MPa)	Pump Capacity (LPM)@Input Speed (RPM)					
				100	200	300	330	500	600
DS2501	12	0.02	92	2	4	6	6.7	10.2	12.3
DS2502	16	0.036	53	3.6	7.2	10.7	11.8	17.8	21.4
DS2503	18	0.046	41	4.6	9.2	13.9	15.3	23.1	27.4
DS2504	22	0.068	28	6.8	13.6	20.5	22.5	34.1	41
DS2505	25	0.09	21	8.7	17.8	26.5	29.2	45	52

DS25

Performance Data

Pump Model	Plunger Diameter (in)	Displacement (GAL/REV)	Maximum Pressure (PSI)	Pump Capacity (GPM)@Input Speed (RPM)					
				100	200	300	330	500	600
DS2501	0.48	0.0054	13420	0.54	1.08	1.62	1.78	2.7	3.24
DS2502	0.64	0.0094	7700	0.94	1.88	2.82	3.1	4.7	5.64
DS2503	0.72	0.0122	5940	1.22	2.44	3.66	4.03	6.1	7.32
DS2504	0.88	0.018	4025	1.8	3.6	5.4	5.94	9	10.8
DS2505	1	0.0238	3045	2.3	4.7	7	7.7	11.9	13.8

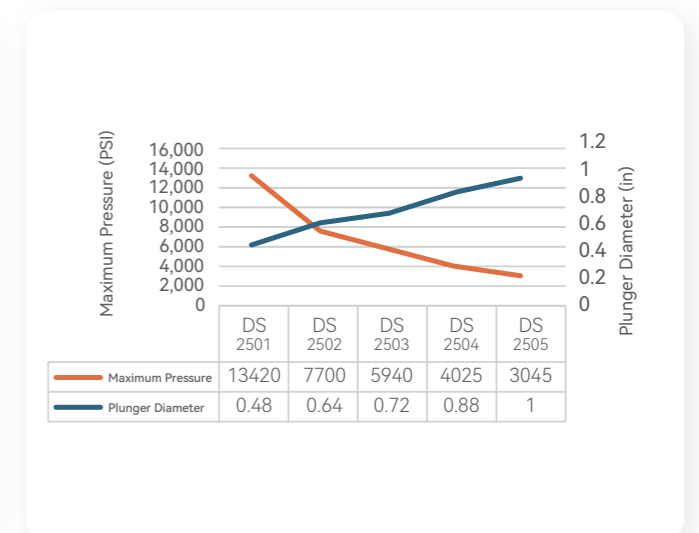
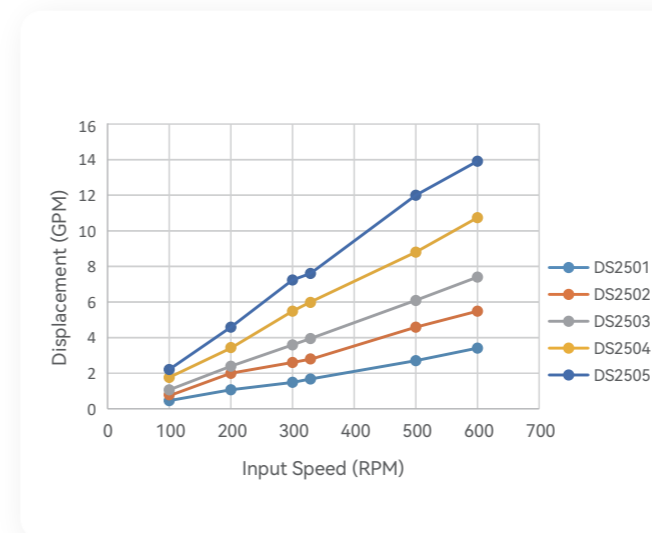
Standard connection sizes

Pump Model	Suction (in)	Discharge (in)
DS2501	0.64	0.26
DS2502	0.85	0.35
DS2503	1.0	0.4
DS2504	1.1	0.5
DS2505	1.4	0.6

Fluid cylinder materials

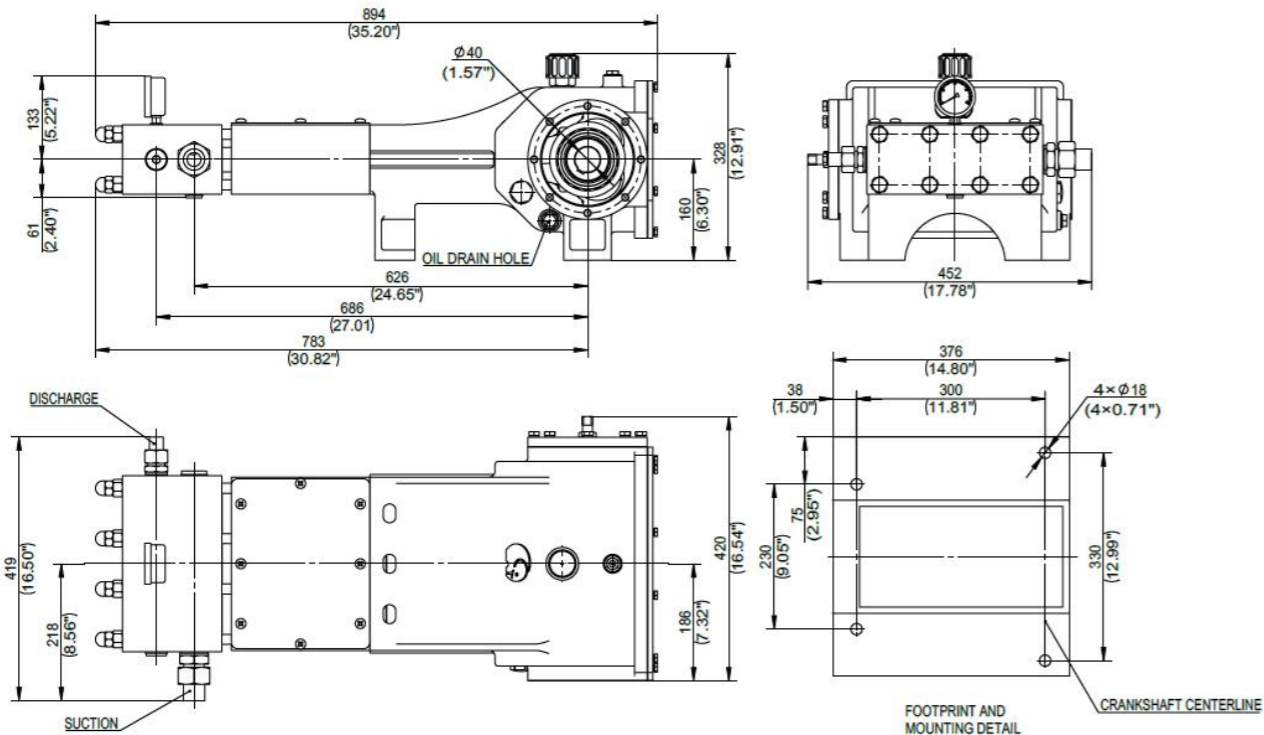
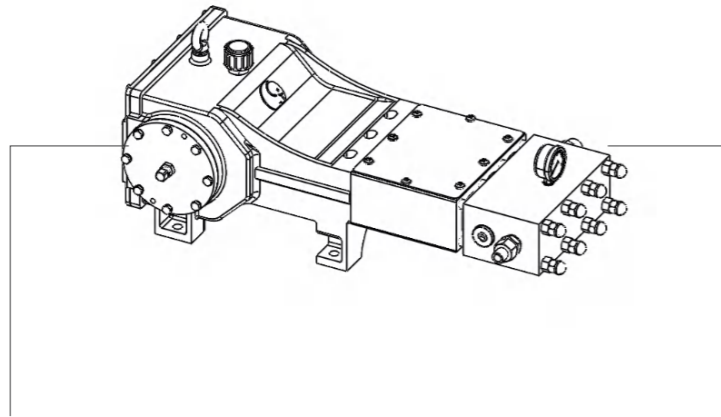
Fluid cylinder materials	Cast
Carbon Steel	N/A
Fluid cylinder materials	
304 / 316L / 17-4PH / 2205 / 2507 Stainless Steel	

*Special materials are available upon request



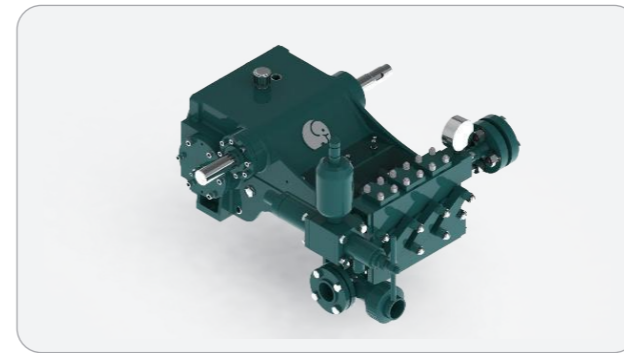
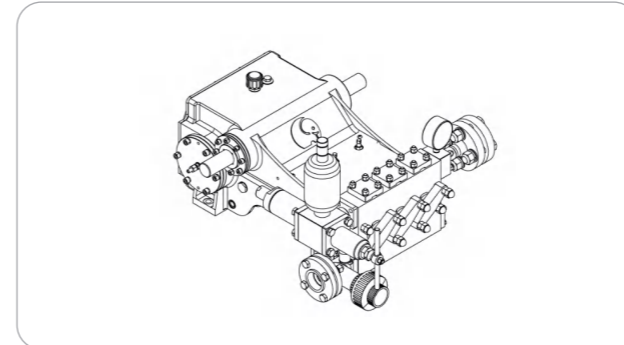
DS25

Engineering dimensional outline



DS45

Specifications



Design Standard	API-674, Third Edition
Configuration	Horizontal Triplex Plunger
Number of Plungers	3
Continuous Duty	34 BHP
Intermittent	45 BHP
Duty Stroke Length	2.0 Inches / 50.8 mm
Frame Load Rating	4,450 lbs / 2018.52 kg
Pump Weight (Average)	550 lbs / 249.48 kg
Intermittent Duty Speed Rating	600 RPM
Continuous Duty Speed Rating	450 RPM
Minimum Speed	100 RPM
Mechanical Efficiency	90%
Lubrication System	Splash, Gravity Return
Crankcase Oil Capacity	1.75 Gallons / 6.62 L
Lube Oil Type	SAE30
Fluid Temperature Range	-20~350°F/-28~176°C
Valve Type	Disc Valve / Wear-resistant Valve

Performance Data (Metric)

Pump Model	Plunger Diameter (mm)	Displacement (L/REV)	Maximum Pressure (MPa)	Pump Capacity (LPM)@Input Speed (RPM)						
				100	200	300	400	450	500	600
DS4506	19	0.0435	69	4.5	8.7	13.2	17.4	19.7	22.0	26.1
DS4507	22	0.0590	51	6.1	11.7	17.8	23.5	26.5	29.5	35.6
DS4508	25	0.0772	39	7.6	15.5	23.1	31.0	34.8	38.6	46.2
DS4510	32	0.1207	25	12.1	24.2	36.3	48.4	54.5	60.6	72.3
DS4512	38	0.1737	17	17.4	34.8	52.2	69.6	78.3	87.1	104.1
DS4514	44	0.2366	13	23.8	47.3	71.2	94.6	106.4	118.5	141.9
DS4516	51	0.3089	10	31.0	61.7	92.7	123.4	138.9	154.4	185.5
DS4518	57	0.3910	8	39.0	78.3	117.3	156.3	176.0	195.7	234.7
DS4520	64	0.4826	6	48.4	96.5	145.0	193.0	217.3	241.5	289.6

DS45

Performance Data

Pump Model	Plunger Diameter (in)	Displacement (GAL/REV)	Maximum Pressure (PSI)	Pump Capacity (GPM)@Input Speed (RPM)						
				100	200	300	400	450	500	600
DS4506	0.75	0.0115	10,000	1.2	2.3	3.5	4.6	5.2	5.8	6.9
DS4507	0.875	0.0156	7,400	1.6	3.1	4.7	6.2	7	7.8	9.4
DS4508	1	0.0204	5,650	2	4.1	6.1	8.2	9.2	10.2	12.2
DS4510	1.25	0.0319	3,620	3.2	6.4	9.6	12.8	14.4	16	19.1
DS4512	1.5	0.0459	2,520	4.6	9.2	13.8	18.4	20.7	23	27.5
DS4514	1.75	0.0625	1,850	6.3	12.5	18.8	25	28.1	31.3	37.5
DS4516	2	0.0816	1,420	8.2	16.3	24.5	32.6	36.7	40.8	49
DS4518	2.25	0.1033	1,120	10.3	20.7	31	41.3	46.5	51.7	62
DS4520	2.5	0.1275	915	12.8	25.5	38.3	51	57.4	63.8	76.5

Standard connection sizes

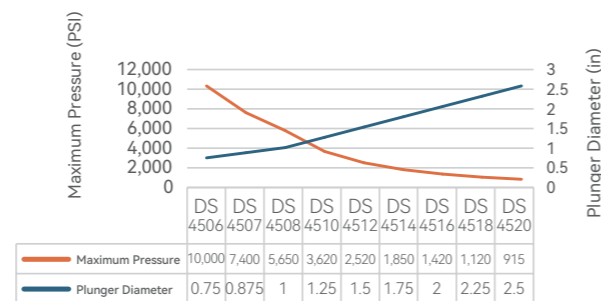
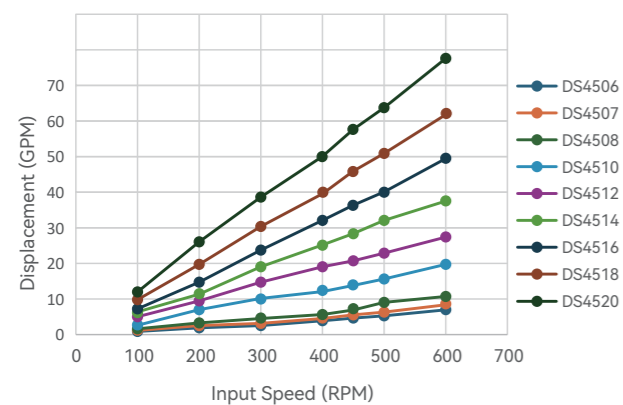
*NPT connection available

Pump Model	Suction (in)	Discharge (in)
DS4506-DS4508	1.5	0.75
DS4509-DS4520	2.0	1.5
DS4515-DS4520	2.5	1.5

Fluid cylinder materials

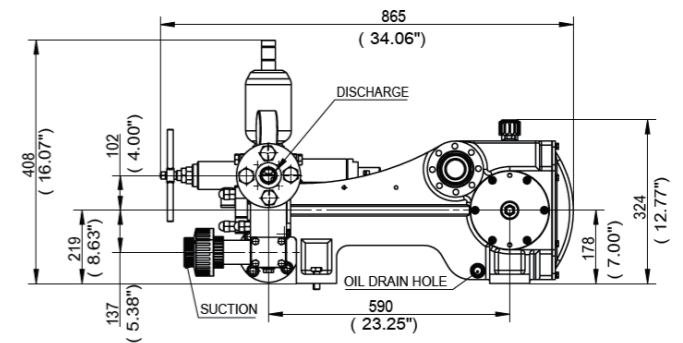
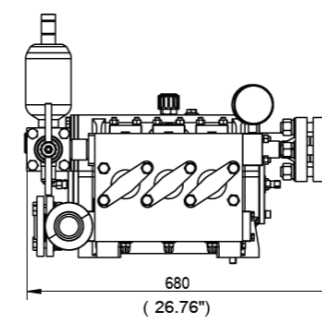
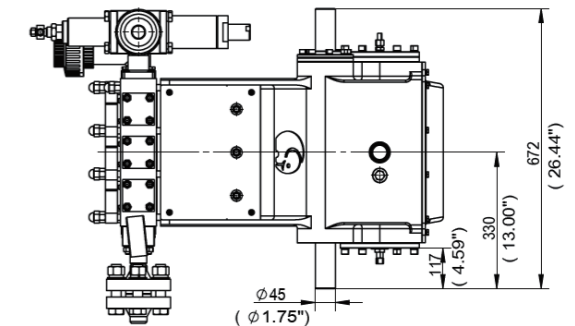
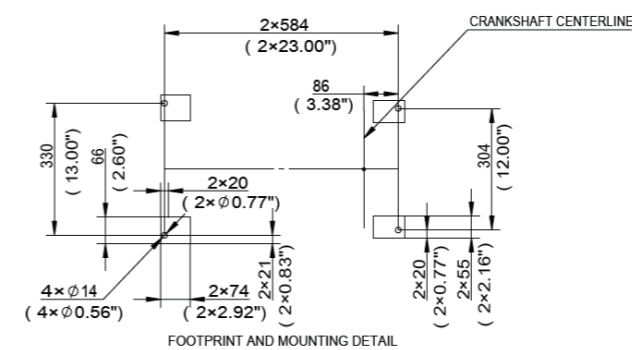
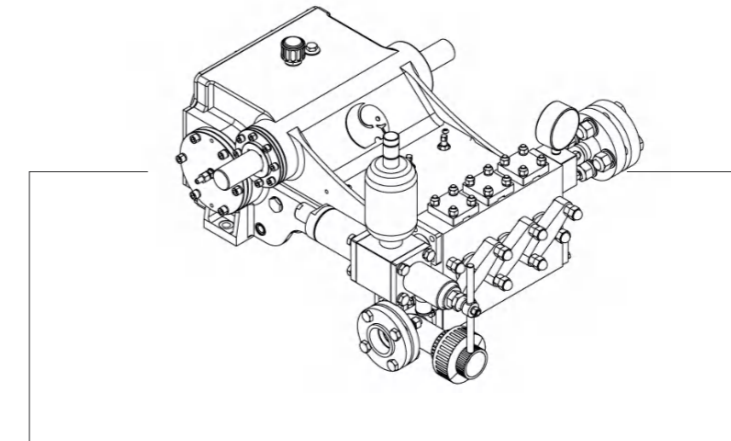
Fluid cylinder materials	Cast
Carbon Steel	Ductile Iron
Hi-Strength Carbon Alloy Steel	Aluminum Bronze
304 / 316L / 17-4PH / 2205 / 2507 Stainless Steel	

*Special materials are available upon request

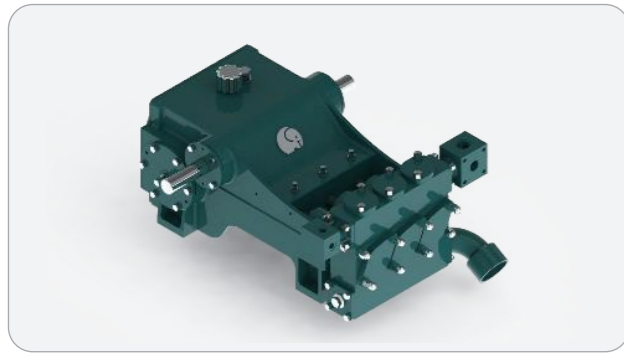
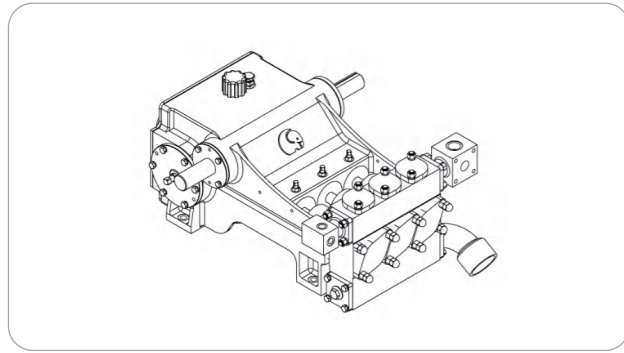


DS45

Engineering dimensional outline



DS77



Design Standard	API-674, Third Edition
Configuration	Horizontal Triplex Plunger
Number of Plungers	3
Continuous Duty	62 BHP
Intermittent Duty	77 BHP
Stroke Length	3.0 Inches / 76.2 mm
Frame Load Rating	6,000 lbs / 2721.6 kg
Pump Weight (Average)	950 lbs / 430.92 kg
Intermittent Duty Speed Rating	500 RPM
Continuous Duty Speed Rating	400 RPM
Minimum Speed	100 RPM
Mechanical Efficiency	90%
Lubrication System	Splash, Gravity Return
Lubrication System (Optional)	3.25 Gallons / 12.0 L
Lube Oil Type	SAE30
Fluid Temperature Range	-20~350°F/-28~176°C
Valve Type	Disc Valve / Wear-resistant Valve

Performance Data (Metric)

Pump Model	Plunger Diameter (mm)	Displacement (L/REV)	Maximum Pressure (MPa)	Pump Capacity (LPM)@Input Speed (RPM)						
				100	200	300	350	400	450	500
DS7707	22	0.0886	69	8.7	17.8	26.5	31.0	35.6	39.7	44.3
DS7708	25	0.1158	52	11.7	23.1	34.8	40.5	46.2	52.2	57.9
DS7710	32	0.1809	34	18.2	36.3	54.1	63.2	72.3	81.4	90.5
DS7712	38	0.2604	23	26.1	52.2	78.0	91.2	104.1	117.3	130.2
DS7714	44	0.3547	17	35.6	70.8	106.4	124.1	141.9	159.7	177.5
DS7716	51	0.4633	13	46.2	92.7	138.9	162.0	185.5	208.6	231.6
DS7718	57	0.5863	10	58.7	117.3	176.0	205.1	234.7	263.8	293.3
DS7720	64	0.7237	9	72.3	144.6	217.3	253.2	289.6	325.5	361.8
DS7722	70	0.8758	7	87.4	175.2	262.7	306.6	350.5	393.6	439.1
DS7724	76	1.0424	6	104.1	208.6	312.6	364.9	416.4	469.3	522.3

DS77

Performance Data

Pump Model	Plunger Diameter (in)	Displacement (GAL/REV)	Maximum Pressure (PSI)	Pump Capacity (GPM)@Input Speed (RPM)						
				100	200	300	350	400	450	500
DS7707	0.875	0.0234	10,000	2.3	4.7	7	8.2	9.4	10.5	11.7
DS7708	1	0.0306	7,600	3.1	6.1	9.2	10.7	12.2	13.8	15.3
DS7710	1.25	0.0478	4,900	4.8	9.6	14.3	16.7	19.1	21.5	23.9
DS7712	1.5	0.0688	3,400	6.9	13.8	20.6	24.1	27.5	31	34.4
DS7714	1.75	0.0937	2,500	9.4	18.7	28.1	32.8	37.5	42.2	46.9
DS7716	2	0.1224	1,900	12.2	24.5	36.7	42.8	49	55.1	61.2
DS7718	2.25	0.1549	1,500	15.5	31	46.5	54.2	62	69.7	77.5
DS7720	2.5	0.1912	1,250	19.1	38.2	57.4	66.9	76.5	86	95.6
DS7722	2.75	0.2314	1,000	23.1	46.3	69.4	81	92.6	104	116
DS7724	3	0.2754	850	27.5	55.1	82.6	96.4	110	124	138

Standard connection sizes

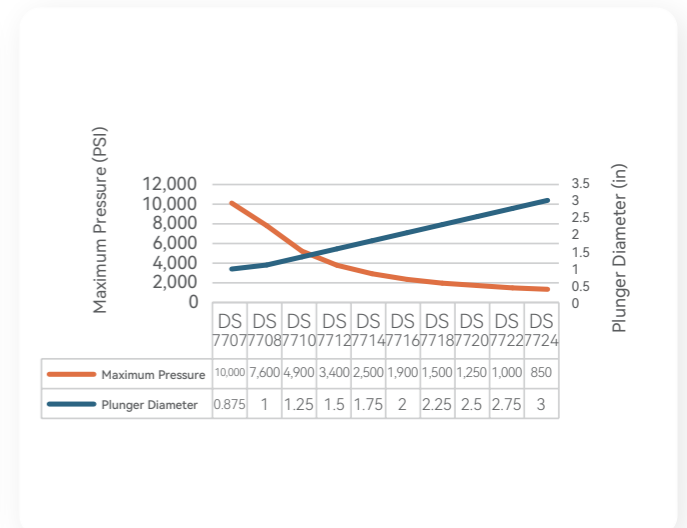
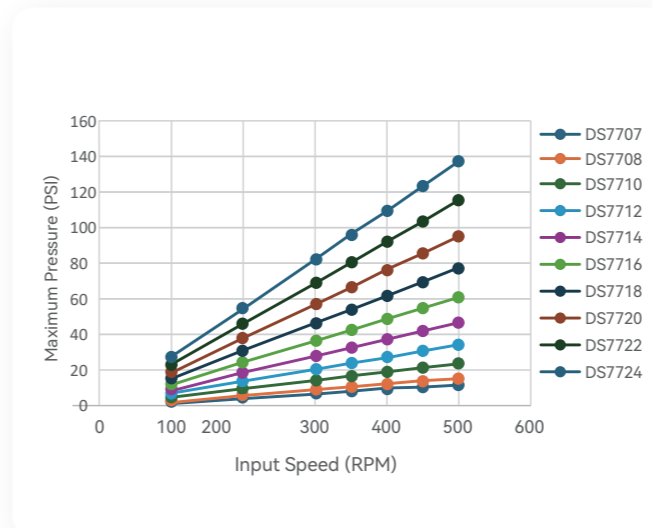
*NPT connection available

Pump Model	Suction (in)	Discharge(in)
DS7707-DS7711	2.0	1.0
DS7709-DS7716	3.0	1.5
DS7712-DS7726	3.0	2.0

Fluid cylinder materials

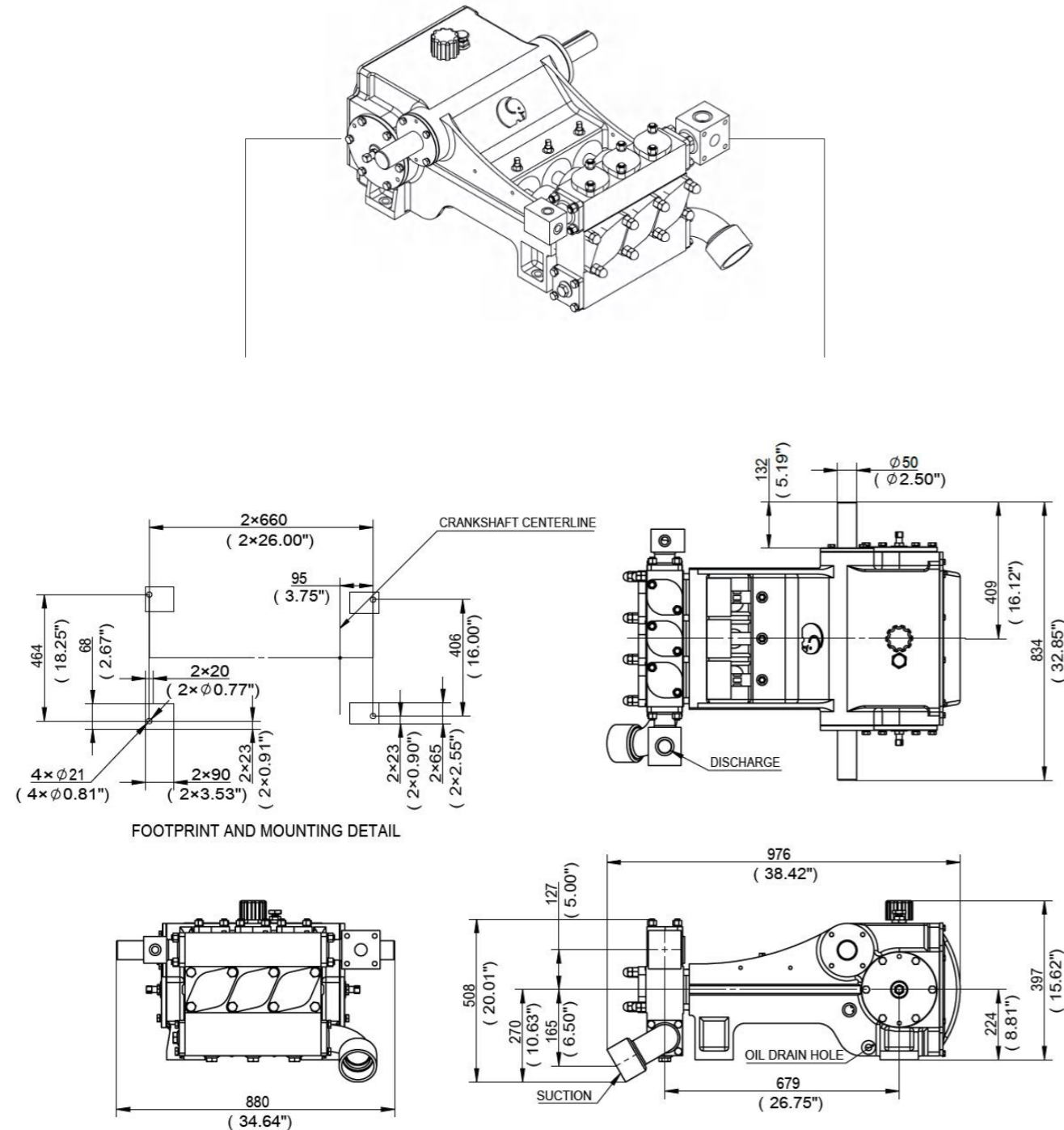
Fluid cylinder materials	Cast
Carbon Steel	Ductile Iron
Hi-Strength Carbon Alloy Steel	Aluminum Bronze
304 / 316L / 17-4PH / 2205 / 2507 Stainless Steel	

*Special materials are available upon request



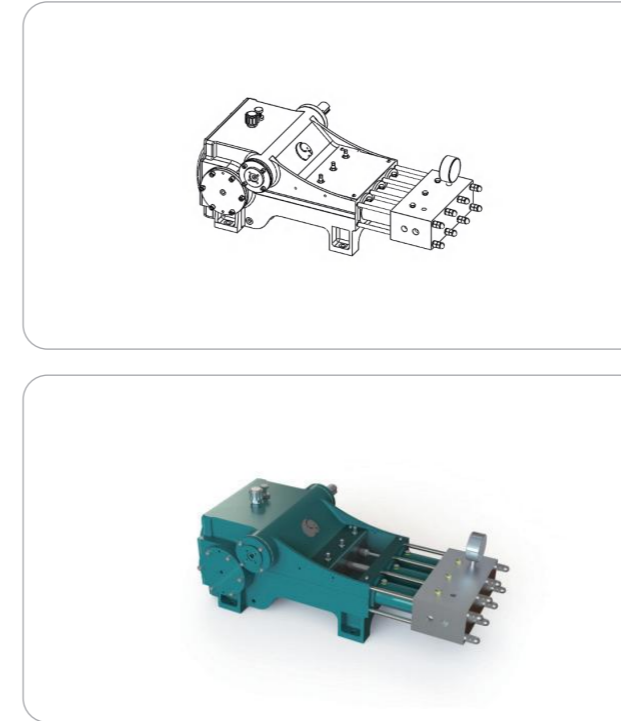
DS77

Engineering dimensional outline



DS70

Specifications



Design Standard	API-674, Third Edition
Configuration	Horizontal Triplex Plunger
Number of Plungers	3
Continuous Duty	74 BHP
Intermittent Duty	100 BHP
Stroke Length	3.0 Inches / 75 mm
Frame Load Rating	6974 lbs / 3170 kg
Pump Weight (Average)	770 lbs / 350 kg
Intermittent Duty Speed Rating	400 RPM
Continuous Duty Speed Rating	350 RPM
Minimum Speed	100 RPM
Mechanical Efficiency	90%
Lubrication System	Splash, Gravity Return
Crankcase Oil Capacity	38 Gallons / 143.83 L
Lube Oil Type	SAE30
Fluid Temperature Range	-20~350°F/-28~176°C
Valve Type	Disc Valve / Wear-resistant Valve

Performance Data (Metric)

Pump Model	Plunger Diameter (mm)	Displacement (L/REV)	Maximum Pressure (MPa)	Pump Capacity (LPM)@Input Speed (RPM)					
				100	200	300	330	500	600
DS7001	12	0.025	280	2.5	5	7.7	8.4	8.9	10.2
DS7002	13.5	0.032	220	3.4	6.4	10.2	11.3	11.9	13
DS7003	15	0.0397	180	4.2	8.4	12.5	13.6	14.8	16
DS7004	16.5	0.047	150	4.8	9.6	14	15.9	16.7	19
DS7005	18.5	0.059	120	6	12.1	18.2	20	21.2	24
DS7006	21	0.079	90	8	15.5	23.5	25	27.3	32

DS70

Performance Data

Pump Model	Plunger Diameter (in)	Displacement (GAL/REV)	Maximum Pressure (PSI)	Pump Capacity (GPM)@Input Speed (RPM)					
				100	200	300	330	350	600
DS7001	0.48	0.00675	40600	0.66	1.32	2.04	2.22	2.34	2.7
DS7002	0.54	0.00855	31900	0.9	1.7	2.7	2.97	3.15	3.42
DS7003	0.6	0.0105	26100	1.1	2.2	3.3	3.6	3.9	4.2
DS7004	0.66	0.0126	21750	1.26	2.52	3.78	4.2	4.4	5.04
DS7005	0.74	0.01575	17400	1.6	3.2	4.8	5.3	5.6	6.3
DS7006	0.84	0.021	13050	2.1	4.1	6.2	6.8	7.2	8.4

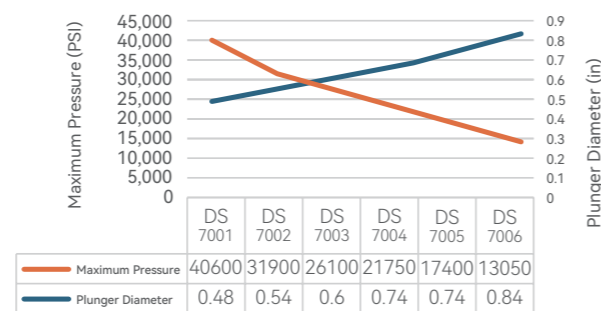
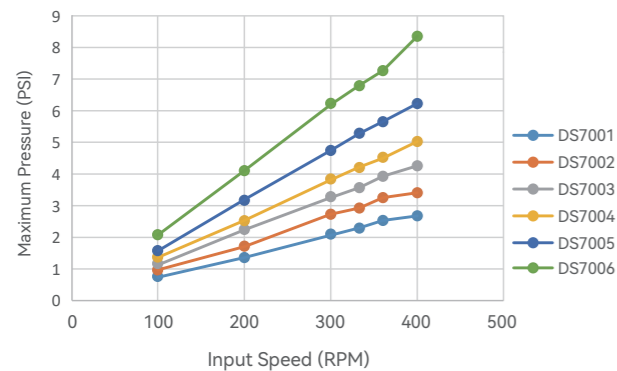
Standard connection sizes

*NPT connection available

Pump Model	Suction (in)	Discharge(in)
DS7001	0.65	0.28
DS7002	0.72	0.3
DS7003	0.8	0.33
DS7004	0.9	0.36
DS7005	1	0.4
DS7006	1.1	0.5

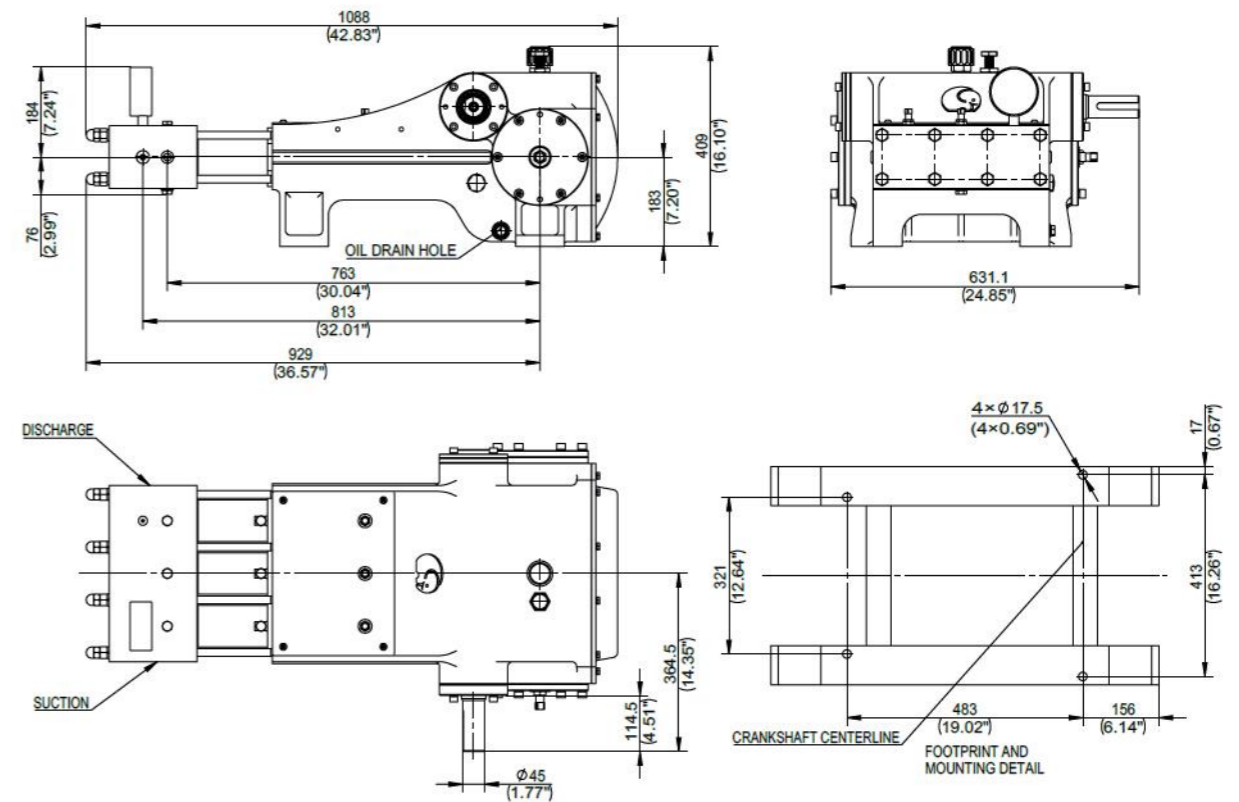
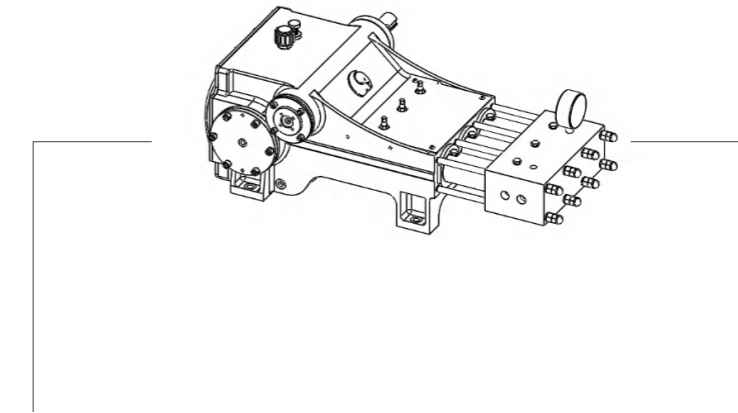
Fluid cylinder materials

Fluid cylinder materials	Cast
Carbon Steel	N/A
Fluid cylinder materials	
304 / 316L / 17-4PH / 2205 / 2507 Stainless Steel	



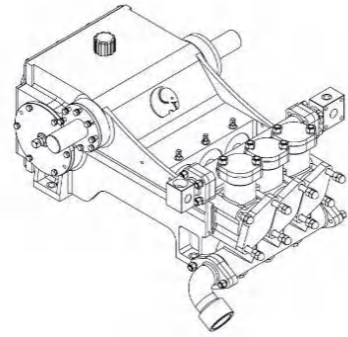
DS70

Engineering dimensional outline



DS104

Specifications



Design Standard	API-674, Third Edition
Configuration	Horizontal Triplex Plunger
Number of Plungers	3
Continuous Duty	88 BHP
Intermittent Duty	104 BHP
Stroke Length	3.5 Inches / 88.9 mm
Frame Load Rating	8,000 lbs / 3628.8 kg
Pump Weight (Average)	1800 lbs / 816.48 kg
Intermittent Duty Speed Rating	500 RPM
Continuous Duty Speed Rating	400 RPM
Minimum Speed	100 RPM
Mechanical Efficiency	90%
Lubrication System	Splash, Gravity Return
Crankcase Oil Capacity	6 Gallons / 22.71 L
Lube Oil Type	SAE30
Fluid Temperature Range	-20~350°F/-28~176°C
Valve Type	Disc Valve / Wear-resistant Valve

Performance Data (Metric)

Pump Model	Plunger Diameter (mm)	Displacement (L/REV)	Maximum Pressure (MPa)	Pump Capacity (LPM)@Input Speed (RPM)						
				100	200	300	350	375	400	425
DS10408	25	0.1351	69	13.6	26.9	40.5	47.3	50.7	54.1	57.5
DS10410	32	0.2112	45	21.2	42.4	63.2	73.8	79.1	84.4	89.7
DS10412	38	0.3039	31	30.3	60.9	91.2	106.4	113.9	121.5	129.1
DS10414	44	0.4137	23	41.3	82.9	124.1	145.0	155.2	165.4	176.0
DS10416	51	0.5405	17	54.1	108.3	162.0	189.3	202.9	216.1	229.7
DS10418	57	0.6839	14	68.5	136.6	205.1	239.2	256.6	273.7	290.7
DS10420	64	0.8444	11	84.4	168.8	253.2	295.6	316.8	337.6	358.8
DS10422	70	1.0220	9	102.2	204.4	306.6	359.6	382.3	408.8	435.3
DS10424	76	1.2161	8	121.5	243.4	364.9	423.9	454.2	488.3	518.5
DS10426	83	1.4273	7	142.7	285.4	427.7	499.6	533.7	571.5	605.6
DS10428	89	1.6552	6	165.4	331.2	495.8	579.1	620.7	662.4	704.0
DS10430	95	1.9001	5	190.0	378.5	571.5	666.2	711.6	760.8	806.2
DS10432	102	2.1616	4	215.7	431.5	647.2	757.0	810.0	863.0	919.8

DS104

Performance Data

Pump Model	Plunger Diameter (in)	Displacement (GAL/REV)	Maximum Pressure (PSI)	Pump Capacity (GPM)@Input Speed (RPM)						
				100	200	300	350	375	400	425
DS10408	1	0.0357	10000	3.6	7.1	10.7	12.5	13.4	14.3	15.2
DS10410	1.25	0.0558	6500	5.6	11.2	16.7	19.5	20.9	22.3	23.7
DS10412	1.5	0.0803	4500	8	16.1	24.1	28.1	30.1	32.1	34.1
DS10414	1.75	0.1093	3300	10.9	21.9	32.8	38.3	41	43.7	46.5
DS10416	2	0.1428	2500	14.3	28.6	42.8	50	53.6	57.1	60.7
DS10418	2.25	0.1807	2000	18.1	36.1	54.2	63.2	67.8	72.3	76.8
DS10420	2.5	0.2231	1600	22.3	44.6	66.9	78.1	83.7	89.2	94.8
DS10422	2.75	0.27	1350	27	54	81	95	101	108	115
DS10424	3	0.3213	1150	32.1	64.3	96.4	112	120	129	137
DS10426	3.25	0.3771	1000	37.7	75.4	113	132	141	151	160
DS10428	3.5	0.4373	825	43.7	87.5	131	153	164	175	186
DS10430	3.75	0.502	725	50.2	100	151	176	188	201	213
DS10432	4	0.5711	4650	57	114	171	200	214	228	243

Standard connection sizes

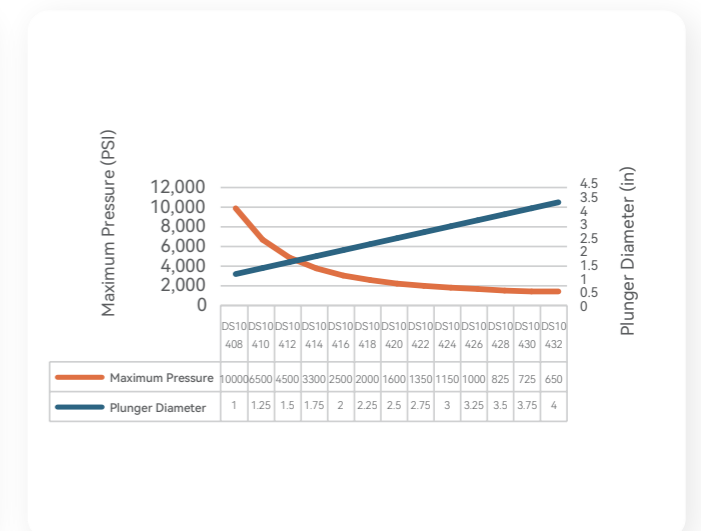
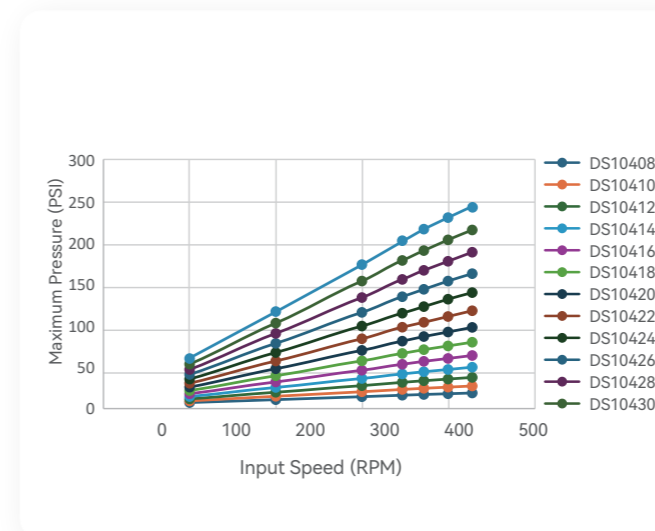
*NPT connection available

Pump Model	Suction (in)	Discharge(in)
DS10408-DS10420	3.0	2.0
DS10418-DS10432	4.0	2.0
DS10428-DS10432	4.0	3.0

Fluid cylinder materials

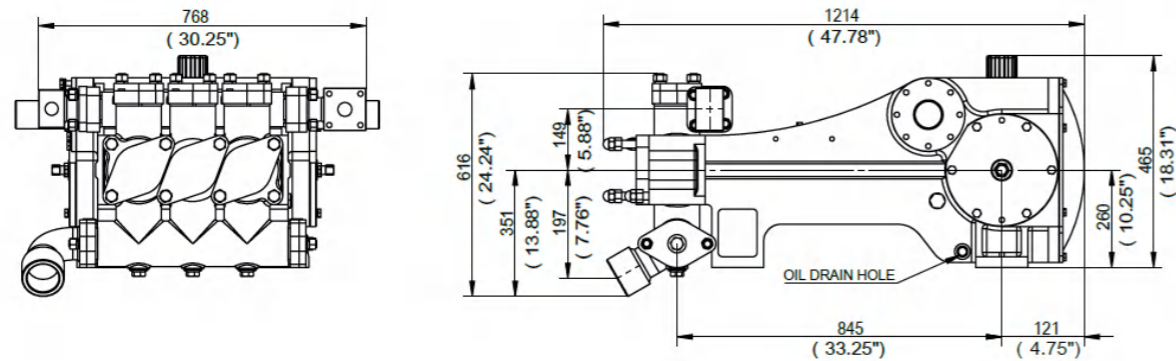
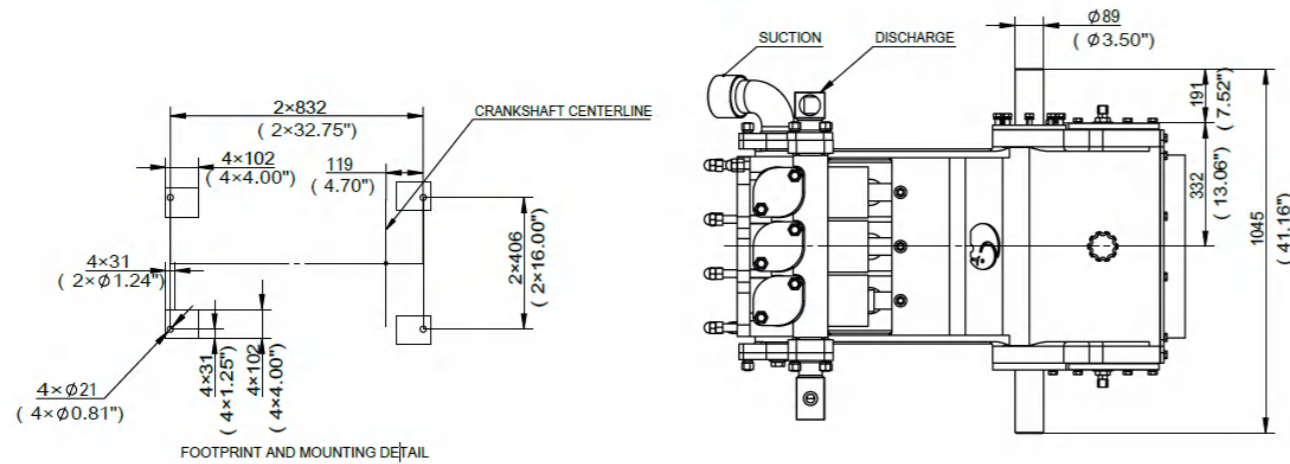
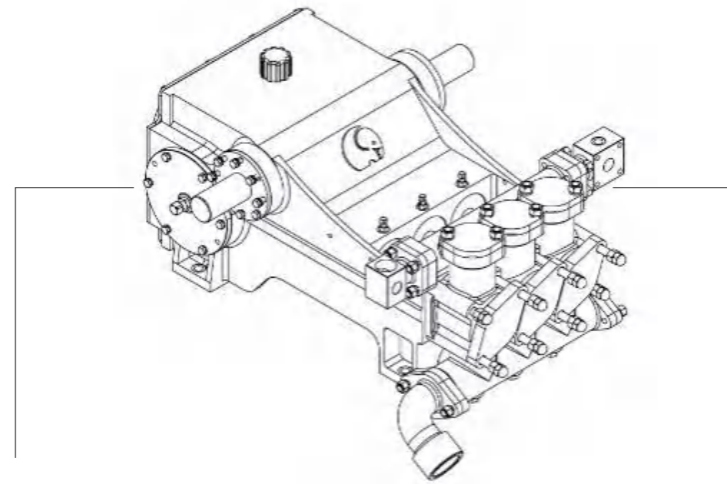
Fluid cylinder materials	Cast
Carbon Steel	Ductile Iron
Fluid cylinder materials	
304 / 316L / 17-4PH / 2205 / 2507 Stainless Steel	

*Special materials are available upon request



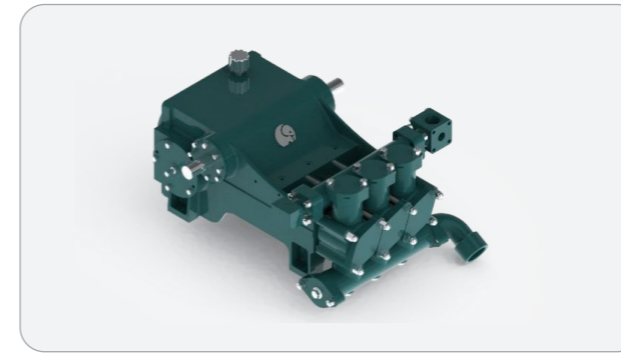
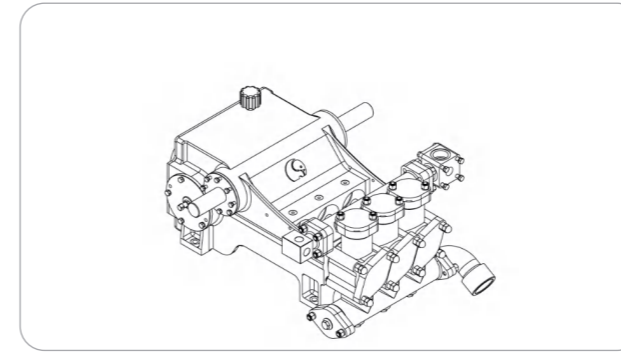
DS104

Engineering dimensional outline



DS108

Specifications



Design Standard	API-674, Third Edition
Configuration	Horizontal Triplex Plunger
Stroke Length	3.25 Inches / 82.55 mm
Continuous Duty	84 BHP
Intermittent Duty	108 BHP
Frame Load Rating	7,900 lbs / 3583.44 kg
Pump Weight	1,400 lbs / 635.04 kg
Intermittent Duty Speed Rating	500 RPM
Continuous Duty Speed Rating	387 RPM
Minimum Speed	100 RPM
Mechanical Efficiency	90%
Lubrication System	Splash, Gravity Return
Crankcase Oil Capacity	4 Gallons / 15.14 L
Lube Oil Type	SAE30
Fluid Temperature Range	-20~350°F/-28~176°C

Performance Data (Metric)

Pump Model	Plunger Diameter (mm)	Displacement (L/REV)	Maximum Pressure (MPa)	Pump Capacity (LPM)@Input Speed (RPM)									
				100	150	200	250	300	350	387	400	450	500
DS10808	25	0.1257	69	12.5	18.9	25.0	31.4	37.5	43.9	48.4	50.3	56.4	62.8
DS10810	32	0.1961	44	19.7	29.5	39.4	49.2	58.7	68.5	75.7	78.3	88.2	98.0
DS10812	38	0.2824	31	28.4	42.4	56.4	70.4	84.8	98.8	109.4	112.8	127.2	141.2
DS10814	44	0.3842	23	38.6	57.9	76.8	96.1	115.4	134.4	148.8	153.7	173.0	192.3
DS10816	51	0.5019	17	50.3	75.3	100.3	125.7	150.6	175.6	194.2	200.6	226.0	250.9
DS10818	57	0.6351	14	63.6	95.4	127.2	159.0	190.8	222.2	246.0	254.0	285.8	317.6
DS10820	64	0.7843	11	78.3	117.7	156.7	196.1	235.4	274.4	303.6	313.8	352.8	392.1
DS10822	70	0.9489	9	95.0	142.3	189.6	237.3	284.6	331.9	367.1	379.6	426.9	474.6
DS10824	76	1.1291	8	112.8	169.6	226.0	282.4	338.8	395.2	437.2	451.6	508.3	564.7
DS10826	83	1.3251	7	132.5	198.7	265.0	331.2	397.4	463.7	512.9	529.9	596.5	662.8

DS108

Performance Data

Pump Model	Plunger Diameter (in)	Displacement (GAL/REV)	Maximum Pressure (PSI)	Pump Capacity (GPM)@Input Speed (RPM)									
				100	150	200	250	300	350	387	400	450	500
DS10808	1	0.0332	10060	3.3	5	6.6	8.3	9.9	11.6	12.8	13.3	14.9	16.6
DS10810	1.25	0.0518	6450	5.2	7.8	10.4	13	15.5	18.1	20	20.7	23.3	25.9
DS10812	1.5	0.0746	4470	7.5	11.2	14.9	18.6	22.4	26.1	28.9	29.8	33.6	37.3
DS10814	1.75	0.1015	3280	10.2	15.3	20.3	25.4	30.5	35.5	39.3	40.6	45.7	50.8
DS10816	2	0.1326	2500	13.3	19.9	26.5	33.2	39.8	46.4	51.3	53	59.7	66.3
DS10818	2.25	0.1678	2000	16.8	25.2	33.6	42	50.4	58.7	65	67.1	75.5	83.9
DS10820	2.5	0.2072	1600	20.7	31.1	41.4	51.8	62.2	72.5	80.2	82.9	93.2	103.6
DS10822	2.75	0.2507	1330	25.1	37.6	50.1	62.7	75.2	87.7	97	100.3	112.8	125.4
DS10824	3	0.2983	1120	29.8	44.8	59.7	74.6	89.5	104.4	115.5	119.3	134.3	149.2
DS10826	3.25	0.3501	950	35	52.5	70	87.5	105	122.5	135.5	140	157.6	175.1

Standard connection sizes

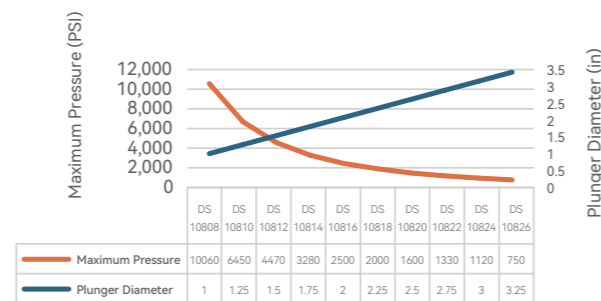
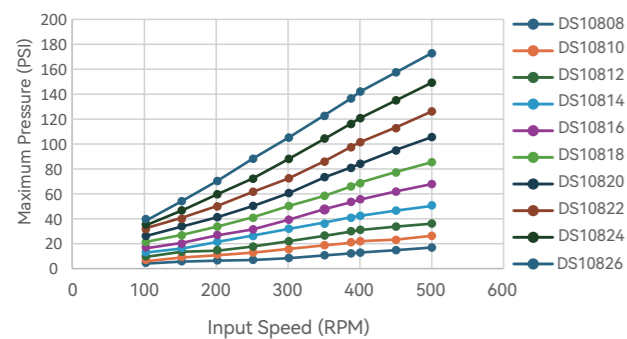
*NPT connection available

Pump Model	Suction (in)	Discharge(in)
DS10808-DS10810	2.0	1.5
DS10812-DS10820	3.0	1.5
DS10822-DS10826	4.0	2.0

Fluid cylinder materials

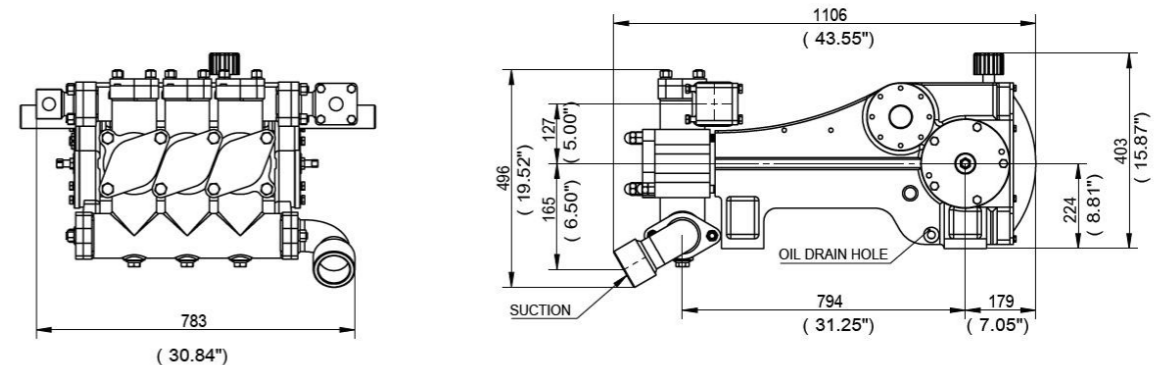
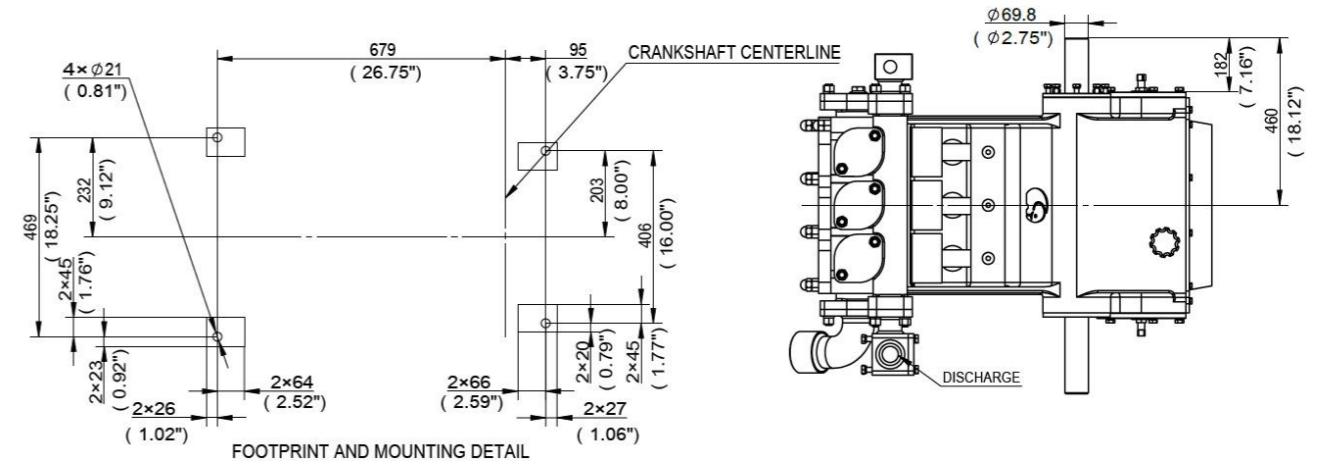
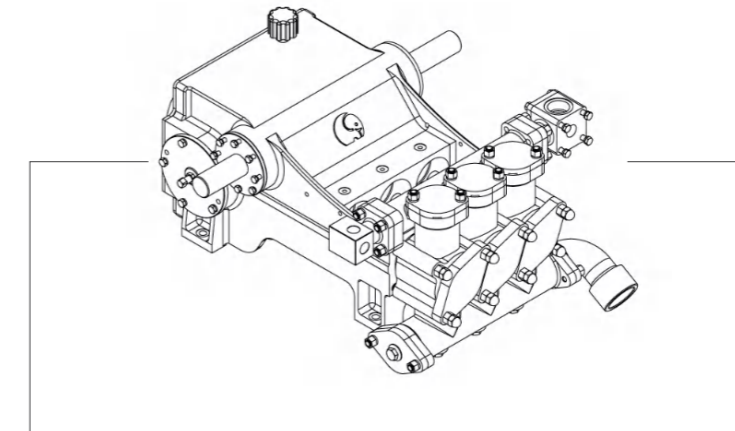
Fluid cylinder materials	Cast
Carbon Steel	Ductile Iron
Hi-Strength Carbon Alloy Steel	Aluminum Bronze
304 / 316L / 17-4PH / 2205 / 2507 Stainless Steel	

*Special materials are available upon request



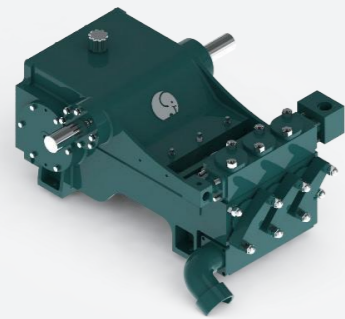
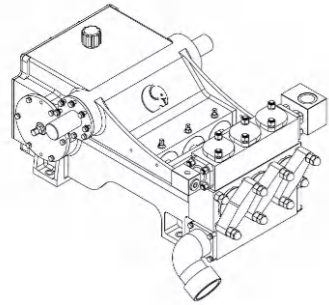
DS108

Engineering dimensional outline



DS142

Specifications



Design Standard	API-674, Third Edition
Configuration	Horizontal Triplex Plunger
Number of Plungers	3
Continuous Duty	117 BHP
Intermittent Duty	142 BHP
Stroke Length	4.0 Inches / 101.6 mm
Frame Load Rating	9,800 lbs / 4445.28 kg
Pump Weight (Average)	2,400lbs / 1088.64 kg
Intermittent Duty Speed Rating	425 RPM
Continuous Duty Speed Rating	350 RPM
Minimum Speed	100 RPM
Mechanical Efficiency	90%
Lubrication System	Splash, Gravity Return
Crankcase Oil Capacity	9 Gallons / 34.07 L
Lube Oil Type	SAE30
Fluid Temperature Range	-20~350°F/-28~176°C
Valve Type	Disc Valve / Wear-resistant Valve

Performance Data (Metric)

Pump Model	Plunger Diameter (mm)	Displacement (L/REV)	Maximum Pressure (MPa)	Pump Capacity (LPM)@Input Speed (RPM)					
				100	200	300	350	400	425
DS14209	29	0.1953	69	19.7	39.0	58.7	68.5	78.0	82.9
DS14210	32	0.2411	55	24.2	48.1	72.3	84.4	96.5	102.6
DS14212	38	0.3475	38	34.8	69.6	104.1	121.5	138.9	147.6
DS14214	44	0.4727	28	47.3	94.6	141.9	165.4	189.3	201.0
DS14216	51	0.6177	21	61.7	123.4	185.5	216.1	247.2	262.7
DS14218	57	0.7816	17	78.3	156.3	234.7	273.7	312.6	332.3
DS14220	64	0.9652	14	96.5	193.0	289.6	338.0	386.1	408.8
DS14222	70	1.1677	11	117.0	233.5	350.5	408.8	465.6	495.8
DS14224	76	1.3899	9	138.9	277.8	416.4	484.5	556.4	590.5
DS14226	83	1.6310	8	163.1	326.3	488.3	571.5	651.0	692.7
DS14228	89	1.8917	7	189.3	378.5	567.8	662.4	757.0	802.4
DS14230	95	2.1715	6	217.3	435.3	651.0	760.8	866.8	923.5
DS14232	102	2.4708	5	247.2	495.8	741.9	863.0	987.9	1048.4
DS14234	108	2.7892	4	279.0	556.4	836.5	976.5	1116.6	1184.7
DS14236	114	3.1272	4	312.6	624.5	938.7	1093.9	1249.1	1328.5

DS142

Performance Data

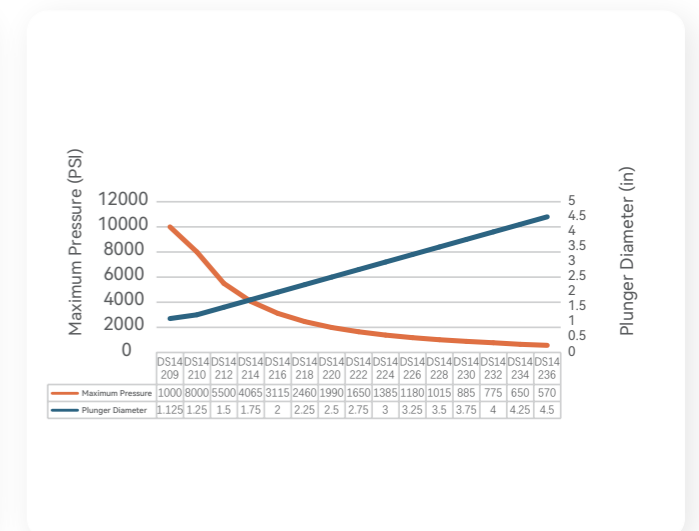
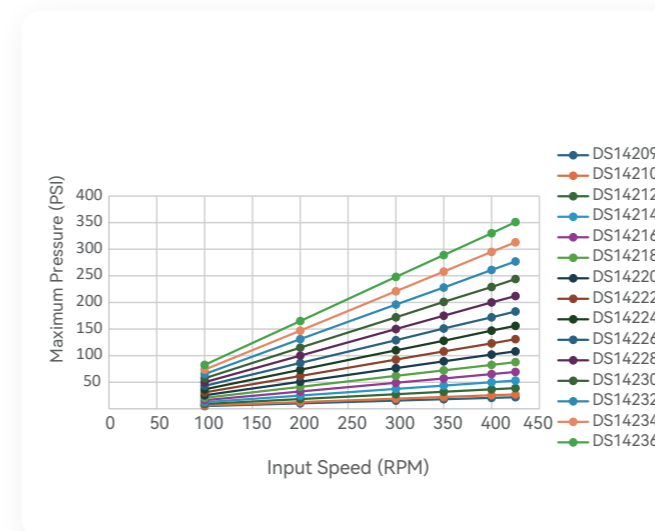
Pump Model	Plunger Diameter (in)	Displacement (GAL/REV)	Maximum Pressure (PSI)	Pump Capacity (GPM)@Input Speed (RPM)					
				100	200	300	350	400	425
DS14209	1.125	0.0516	10000	5.2	10.3	15.5	18.1	20.6	21.9
DS14210	1.25	0.0637	8000	6.4	12.7	19.1	22.3	25.5	27.1
DS14212	1.5	0.0918	5500	9.2	18.4	27.5	32.1	36.7	39
DS14214	1.75	0.1249	4065	12.5	25	37.5	43.7	50	53.1
DS14216	2	0.1632	3115	16.3	32.6	49	57.1	65.3	69.4
DS14218	2.25	0.2065	2460	20.7	41.3	62	72.3	82.6	87.8
DS14220	2.5	0.255	1990	25.5	51	76.5	89.3	102	108
DS14222	2.75	0.3085	1650	30.9	61.7	92.6	108	123	131
DS14224	3	0.3672	1385	36.7	73.4	110	128	147	156
DS14226	3.25	0.4309	1180	43.1	86.2	129	151	172	183
DS14228	3.5	0.4998	1015	50	100	150	175	200	212
DS14230	3.75	0.5737	885	57.4	115	172	201	229	244
DS14232	4	0.6528	775	65.3	131	196	228	261	277
DS14234	4.25	0.7369	650	73.7	147	221	258	295	313
DS14236	4.5	0.8262	570	82.6	165	248	289	330	351

Fluid cylinder materials

Fluid cylinder materials	Cast
Carbon Steel	Ductile Iron
Hi-Strength Carbon Alloy Steel	Aluminum Bronze
304 / 316L / 17-4PH / 2205 / 2507 Stainless Steel	

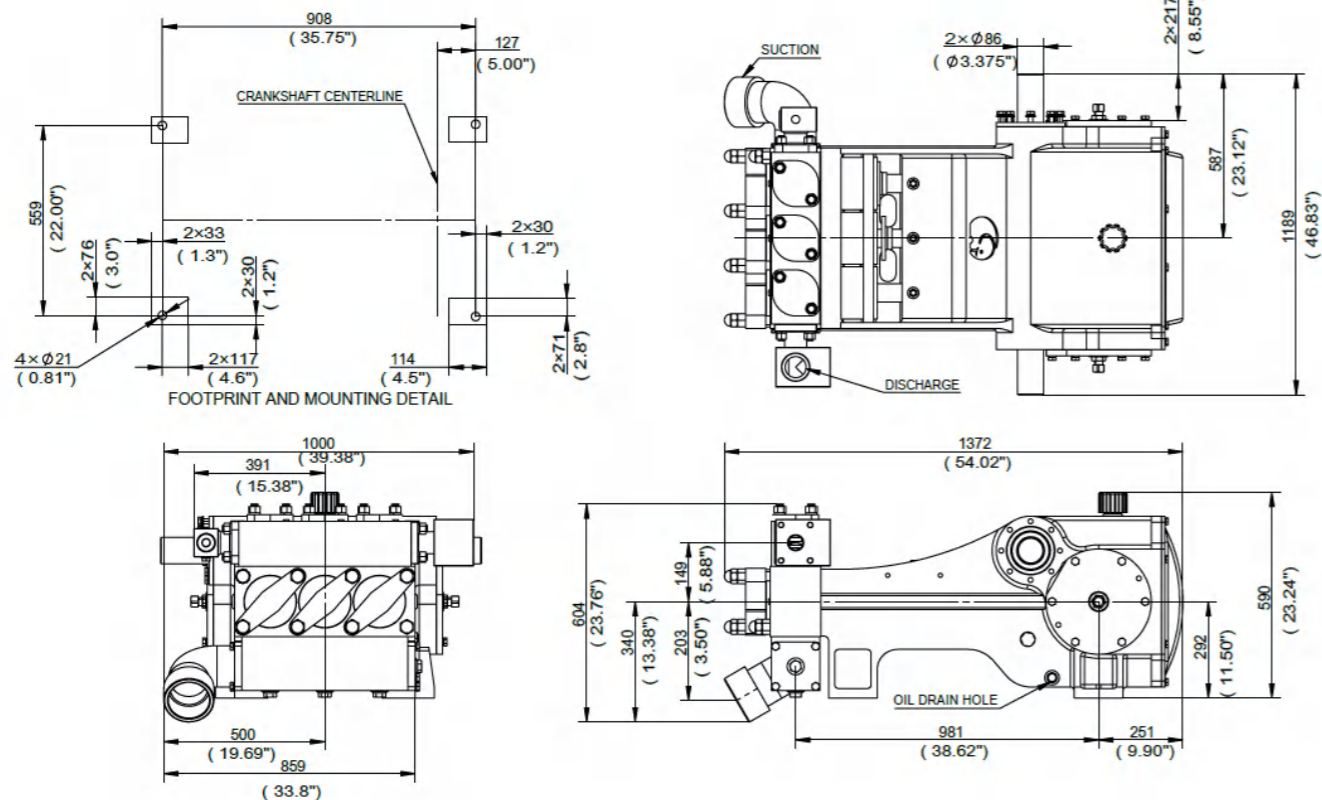
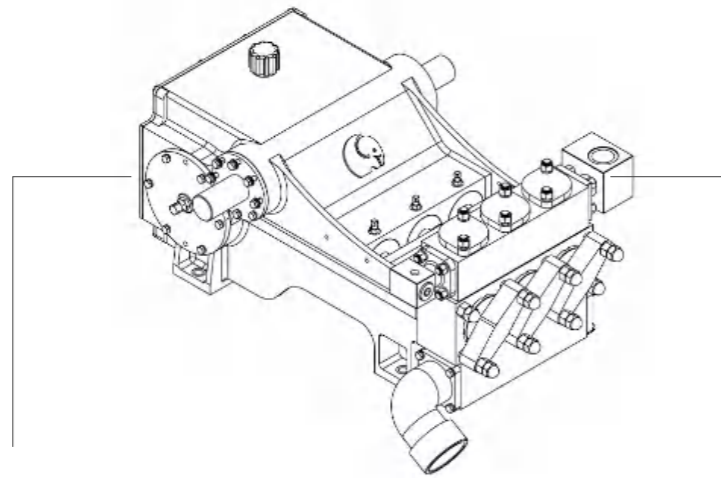
*Special materials are available upon request

DS14209-DS14218	3.0	1.5
DS14228-DS14236	4.0	2.0
DS14228-DS14236	6.0	3.0



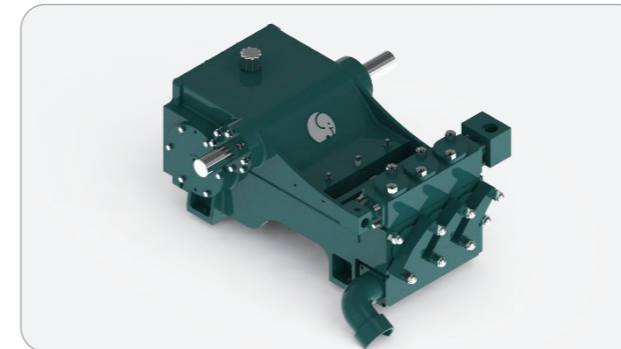
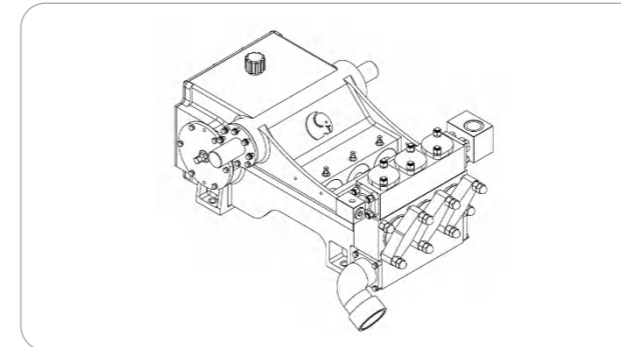
DS142

Engineering dimensional outline



DS190

Specifications



Design Standard	API-674, Third Edition
Configuration	Horizontal Triplex Plunger
Configuration	3
Continuous Duty	150 BHP
Intermittent Duty	190 BHP
Stroke Length	4.5 Inches / 114.3 mm
Frame Load Rating	12,000 lbs / 5443.2 kg
Pump Weight (Average)	2,400 lbs / 1088.64 kg
Intermittent Duty Speed Rating	400 RPM
Continuous Duty Speed Rating	330 RPM
Minimum Speed	100 RPM
Mechanical Efficiency*	90%
Lubrication System	Splash, Gravity Return
Crankcase Oil Capacity	9Gallons / 34.07L
Lube Oil Type	SAE30
Fluid Temperature Range	-20~350 °F/-28~176°C
Valve Type	Disc Valve / Wear-resistant Valve

Performance Data (Metric)

Pump Model	Plunger Diameter (mm)	Displacement (L/REV)	Maximum Pressure (MPa)	Pump Capacity (LPM)@Input Speed (RPM)					
				100	200	300	350	400	425
DS19010	32	0.2714	68	27.3	53.0	83.3	90.8	94.6	109.8
DS19012	38	0.3910	47	37.9	79.5	117.3	128.7	136.3	155.2
DS19014	44	0.5322	34	53.0	106.0	159.0	174.1	185.5	212.0
DS19016	51	0.6949	26	68.1	140.0	208.2	230.9	242.2	276.3
DS19018	57	0.8796	21	87.1	177.9	265.0	291.4	306.6	352.0
DS19020	64	1.0859	17	109.8	215.7	325.5	359.6	378.5	435.3
DS19022	70	1.3138	14	132.5	261.2	393.6	435.3	461.8	526.1
DS19024	76	1.5636	12	155.2	314.2	469.3	514.8	548.8	624.5
DS19026	83	1.8350	10	185.5	367.1	548.8	605.6	643.5	734.3
DS19028	89	2.1283	8	212.0	427.7	639.7	704.0	745.6	851.6
DS19030	95	2.4432	8	246.0	488.3	734.3	806.2	855.4	976.5
DS19032	102	2.7797	7	276.3	556.4	832.7	916.0	972.7	1112.8
DS19034	108	3.1381	6	314.2	628.3	942.5	1037.1	1097.7	1256.6
DS19036	114	3.5182	5	352.0	704.0	1056.0	1162.0	1230.1	1408.0

DS190

Performance Data

Pump Model	Plunger Diameter (in)	Displacement (GAL/REV)	Maximum Pressure (PSI)	Pump Capacity (GPM)@Input Speed (RPM)					
				100	200	300	350	400	425
DS19010	1.25	0.0717	9800	7.2	14	22	22	25	29
DS19012	1.5	0.1033	6800	10	21	31	31	36	41
DS19014	1.75	0.1406	5000	14	28	42	42	49	56
DS19016	2	0.1836	3800	18	37	55	55	64	73
DS19018	2.25	0.2324	3000	23	47	70	70	81	93
DS19020	2.5	0.2869	2400	29	57	86	86	100	115
DS19022	2.75	0.3471	2000	35	69	104	104	122	139
DS19024	3	0.4131	1700	41	83	124	124	145	165
DS19026	3.25	0.4848	1480	49	97	145	145	170	194
DS19028	3.5	0.5623	1200	56	113	169	169	197	225
DS19030	3.75	0.6455	1100	65	129	194	194	226	258
DS19032	4	0.7344	1000	73	147	220	220	257	294
DS19034	4.25	0.8291	800	83	166	249	249	290	332
DS19036	4.5	0.9295	750	93	186	279	279	325	372

Standard connection sizes

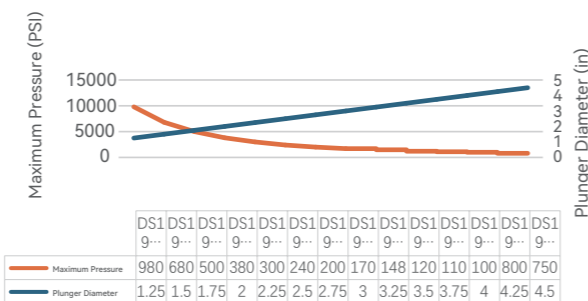
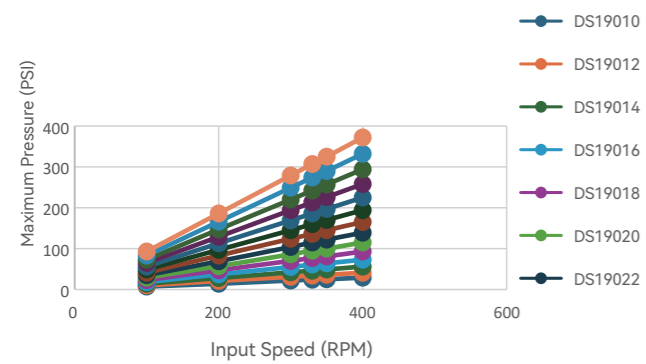
*NPT connection available

Pump Model	Suction (in)	Discharge (in)
DS19010-DS19016	3.0	1.5
DS19018-DS19026	4.0	2.0
DS19028-DS19036	6.0	3.0

Fluid cylinder materials

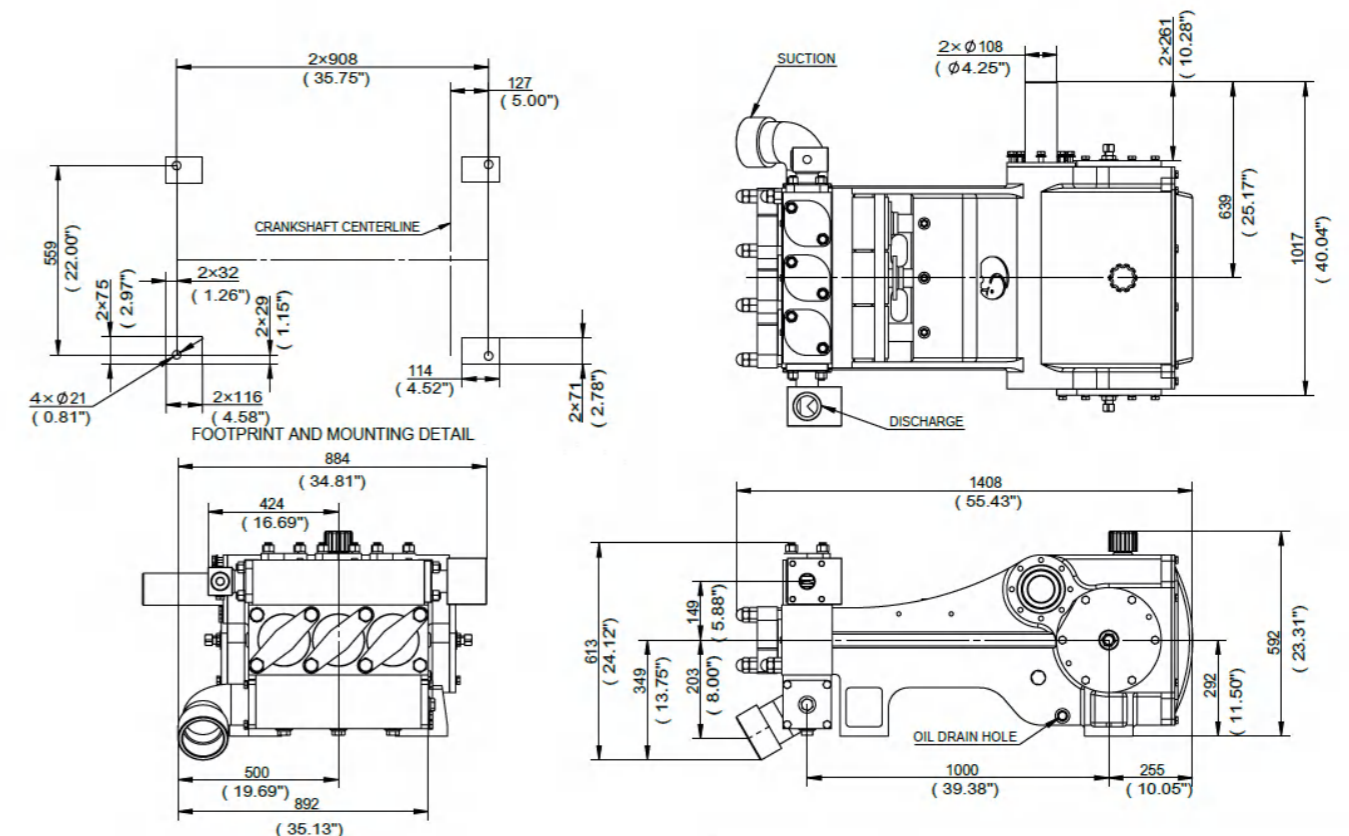
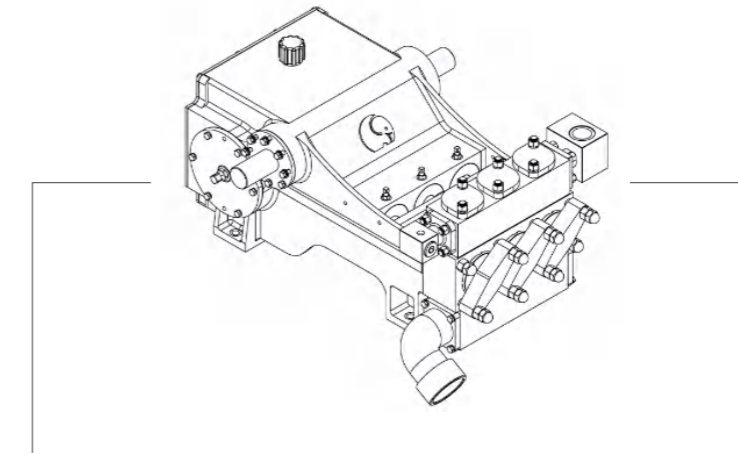
Fluid cylinder materials	Cast
Carbon Steel	Ductile Iron
Hi-Strength Carbon Alloy Steel	Aluminum Bronze
304 / 316L / 17-4PH / 2205 / 2507 Stainless Steel	

*Special materials are available upon request



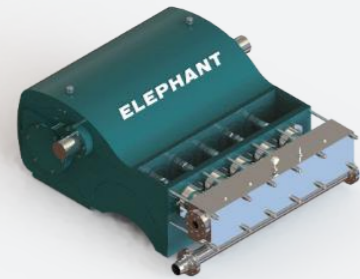
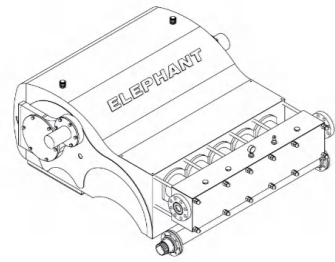
DS190

Engineering dimensional outline



DW240

Specifications



Design Standard	API-674, Third Edition
Configuration	Horizontal Quintuple Plunger
Number of Plungers	5
Continuous Duty	198 BHP
Intermittent Duty	240 BHP
Stroke Length	4.0 Inches / 101.6 mm
Frame Load Rating	10,000 lbs / 4536 kg
Pump Weight (Average)	4,500 lbs / 2041.2 kg
Intermittent Duty Speed Rating	425 RPM
Continuous Duty Speed Rating	350 RPM
Minimum Speed	100 RPM
Mechanical Efficiency	90%
Lubrication System	Splash, Gravity Return
Crankcase Oil Capacity	16 Gallons / 60.56 L
Lube Oil Type	SAE30
Fluid Temperature Range	-20~350°F/-28~176°C
Valve Type	Disc Valve / Wear-resistant Valve

Performance Data (Metric)

Pump Model	Plunger Diameter (mm)	Displacement (L/REV)	Maximum Pressure (MPa)	Pump Capacity (LPM)@Input Speed (RPM)					
				100	200	300	350	400	425
DW24009	29	0.3259	69	32.6	64.3	98.4	113.6	128.7	140.0
DW24010	32	0.4020	56	41.6	79.5	121.1	140.0	162.8	170.3
DW24012	38	0.5791	39	56.8	117.3	174.1	204.4	230.9	246.0
DW24014	44	0.7880	29	79.5	159.0	238.5	276.3	314.2	336.9
DW24016	51	1.0295	22	102.2	204.4	310.4	359.6	412.6	439.1
DW24018	57	1.3028	17	128.7	261.2	389.9	458.0	522.3	552.6
DW24020	64	1.6086	14	162.8	321.7	484.5	564.0	643.5	685.1
DW24022	70	1.9462	12	193.0	389.9	582.9	681.3	779.7	828.9
DW24024	76	2.3164	10	230.9	461.8	696.4	810.0	927.3	984.1
DW24026	83	2.7184	8	272.5	545.0	817.6	950.0	1086.3	1154.4
DW24028	89	3.1529	7	314.2	632.1	946.3	1105.2	1260.4	1339.9
DW24030	95	3.6192	6	363.4	722.9	1086.3	1268.0	1449.7	1536.7
DW24032	102	4.1181	6	412.6	825.1	1233.9	1442.1	1646.5	1748.7
DW24034	108	4.6487	5	465.6	931.1	1396.7	1627.6	1858.4	1975.8
DW24036	114	5.2119	4	522.3	1040.9	1563.2	1824.4	2085.5	2214.2

DW240

Performance Data

Pump Model	Plunger Diameter (in)	Displacement (GAL/REV)	Maximum Pressure (PSI)	Pump Capacity (GPM)@Input Speed (RPM)					
				100	200	300	350	400	425
DW24009	1.125	0.0861	10000	8.6	17	26	30	34	37
DW24010	1.25	0.1062	8150	11	21	32	37	43	45
DW24012	1.5	0.153	5650	15	31	46	54	61	65
DW24014	1.75	0.2082	4160	21	42	63	73	83	89
DW24016	2	0.272	3190	27	54	82	95	109	116
DW24018	2.25	0.3442	2520	34	69	103	121	138	146
DW24020	2.5	0.425	2040	43	85	128	149	170	181
DW24022	2.75	0.5142	1690	51	103	154	180	206	219
DW24024	3	0.612	1420	61	122	184	214	245	260
DW24026	3.25	0.7182	1210	72	144	216	251	287	305
DW24028	3.5	0.833	1040	83	167	250	292	333	354
DW24030	3.75	0.9562	910	96	191	287	335	383	406
DW24032	4	1.088	800	109	218	326	381	435	462
DW24034	4.25	1.2282	710	123	246	369	430	491	522
DW24036	4.5	1.377	630	138	275	413	482	551	585

Standard connection sizes

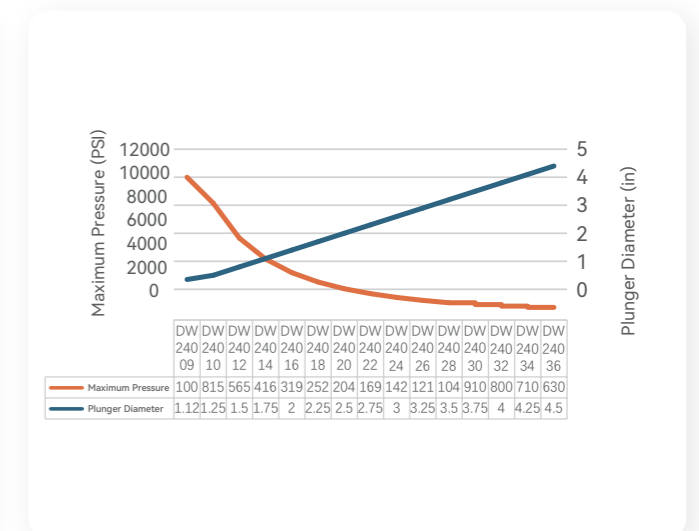
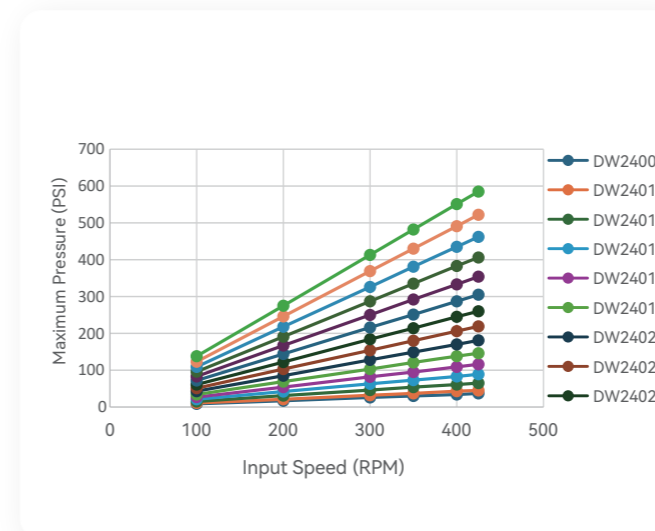
*NPT connection available

Pump Model	Suction (in)	Discharge(in)
DW24009-DW24018	4.0	2.0
DW24020-DW24028	6.0	3.0
DW24028-DW24036	8.0	4.0

Fluid cylinder materials

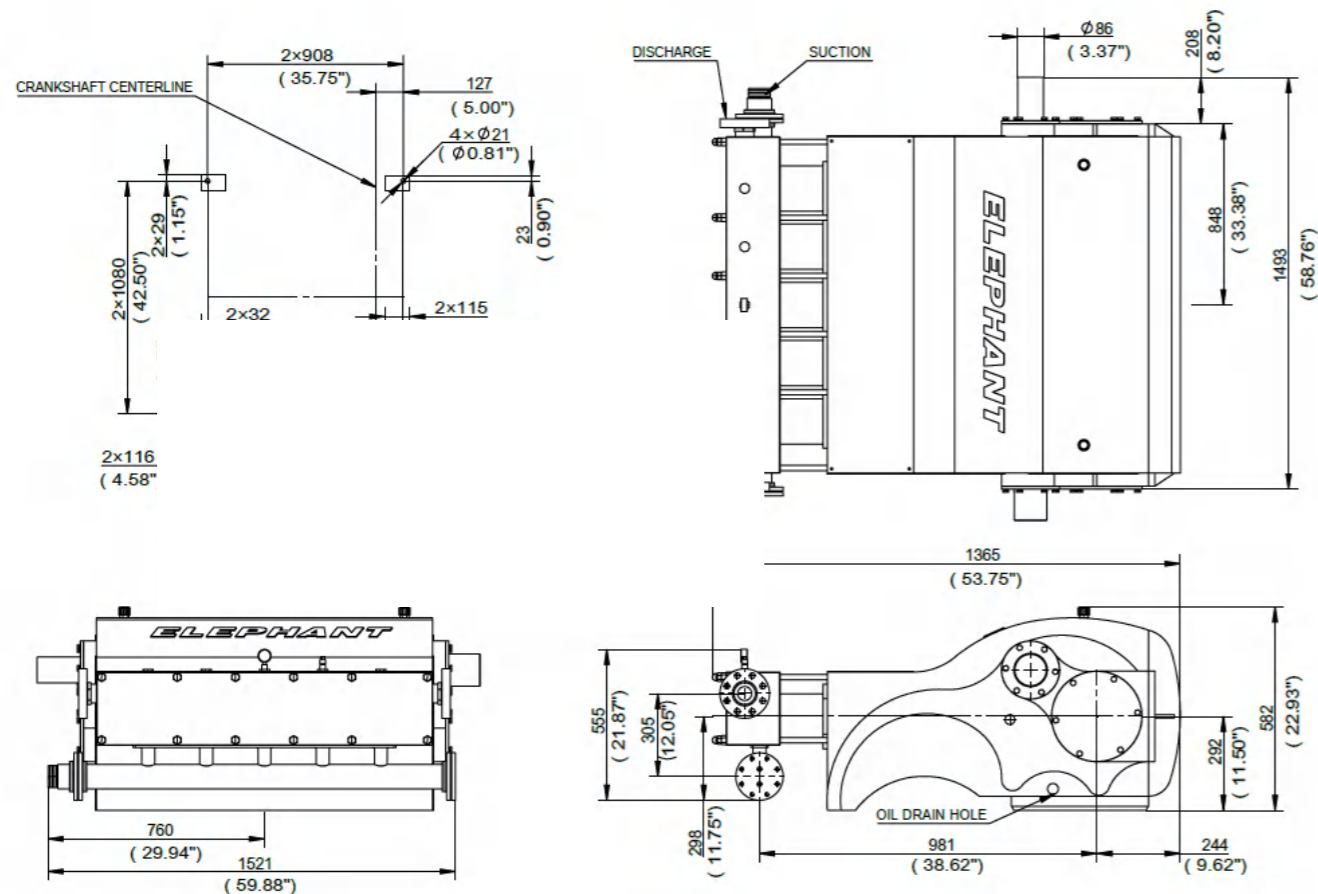
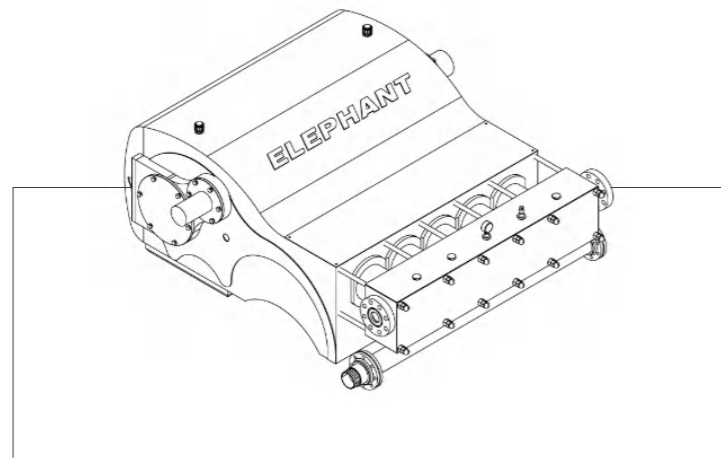
Fluid cylinder materials	Cast
Carbon Steel	Ductile Iron
Hi-Strength Carbon Alloy Steel	Aluminum Bronze
304 / 316L / 17-4PH / 2205 / 2507 Stainless Steel	

*Special materials are available upon request



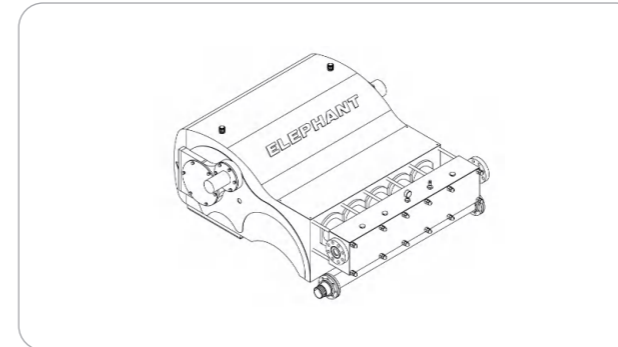
DW240

Engineering dimensional outline



DW325

Specifications



Design Standard	API-674, Third Edition
Configuration	Horizontal Quintuple Plunger
Number of Plungers	5
Continuous Duty	265 BHP
Intermittent Duty	325 BHP
Stroke Length	4.5 Inches / 114.3 mm
Frame Load Rating	12,500 lbs / 5670 kg
Pump Weight (Average)	4,500 lbs / 2041.2 kg
Intermittent Duty Speed Rating	400 RPM
Continuous Duty Speed Rating	330 RPM
Minimum Speed	100 RPM
Mechanical Efficiency	90%
Lubrication System	Splash, Gravity Return
Crankcase Oil Capacity	16 Gallons / 60.56 L
Lube Oil Type	SAE30
Fluid Temperature Range	-20~350°F/-28~176°C
Valve Type	Disc Valve / Wear-resistant Valve

Performance Data (Metric)

Pump Model	Plunger Diameter (mm)	Displacement (L/REV)	Maximum Pressure (MPa)	Pump Capacity (LPM)@Input Speed (RPM)					
				100	200	300	350	400	425
DW32511	35	0.5473	58	56.8	109.8	166.5	181.7	193.0	219.5
DW32512	38	0.6514	49	64.3	128.7	196.8	215.7	227.1	261.2
DW32514	44	0.8868	36	87.1	177.9	265.0	291.4	310.4	355.8
DW32516	51	1.1582	28	117.3	230.9	348.2	382.3	405.0	461.8
DW32518	57	1.4659	21	147.6	295.2	439.1	484.5	514.8	586.7
DW32520	64	1.8096	17	181.7	363.4	541.3	598.0	632.1	722.9
DW32522	70	2.1896	14	219.5	439.1	658.6	722.9	764.6	874.3
DW32524	76	2.6060	12	261.2	522.3	783.5	859.2	912.2	1040.9
DW32526	83	3.0583	10	306.6	613.2	916.0	1010.6	1071.2	1222.6
DW32528	89	3.5469	9	355.8	707.8	1063.6	1169.6	1241.5	1419.4
DW32530	95	4.0719	8	408.8	813.8	1222.6	1343.7	1426.9	1627.6
DW32532	102	4.6328	7	461.8	927.3	1389.1	1529.1	1620.0	1854.7
DW32534	108	5.2301	6	522.3	1044.7	1570.8	1726.0	1831.9	2093.1
DW32536	114	5.8633	6	586.7	1173.4	1760.0	1934.1	2051.5	2346.7

DW325

Performance Data

Pump Model	Plunger Diameter (in)	Displacement (GAL/REV)	Maximum Pressure (PSI)	Pump Capacity (GPM)@Input Speed (RPM)					
				100	200	300	330	350	400
DW32511	1.375	0.1446	8400	15	29	44	48	51	58
DW32512	1.5	0.1721	7100	17	34	52	57	60	69
DW32514	1.75	0.2343	5200	23	47	70	77	82	94
DW32516	2	0.306	4000	31	61	92	101	107	122
DW32518	2.25	0.3873	3100	39	78	116	128	136	155
DW32520	2.5	0.4781	2500	48	96	143	158	167	191
DW32522	2.75	0.5785	2100	58	116	174	191	202	231
DW32524	3	0.6885	1800	69	138	207	227	241	275
DW32526	3.25	0.808	1500	81	162	242	267	283	323
DW32528	3.5	0.9371	1300	94	187	281	309	328	375
DW32530	3.75	1.0758	1100	108	215	323	355	377	430
DW32532	4	1.224	1000	122	245	367	404	428	490
DW32534	4.25	1.3818	900	138	276	415	456	484	553
DW32536	4.5	1.5491	800	155	310	465	511	542	620

Standard connection sizes

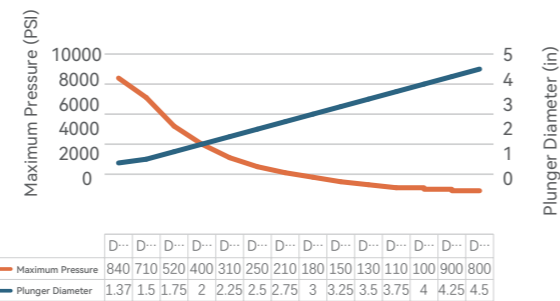
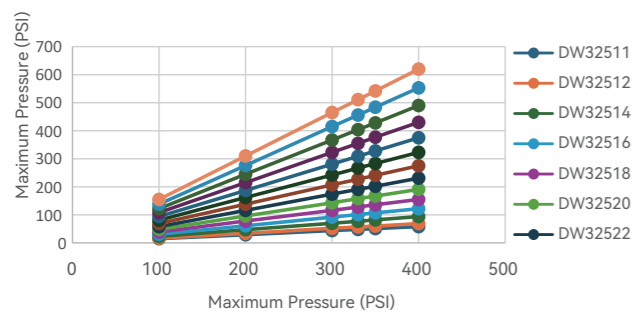
*NPT connection available

Pump Model	Suction (in)	Discharge(in)
DW32511-DW32518	4.0	2.0
DW32520-DW32528	6.0	3.0
DW32530-DW32536	8.0	4.0

Fluid cylinder materials

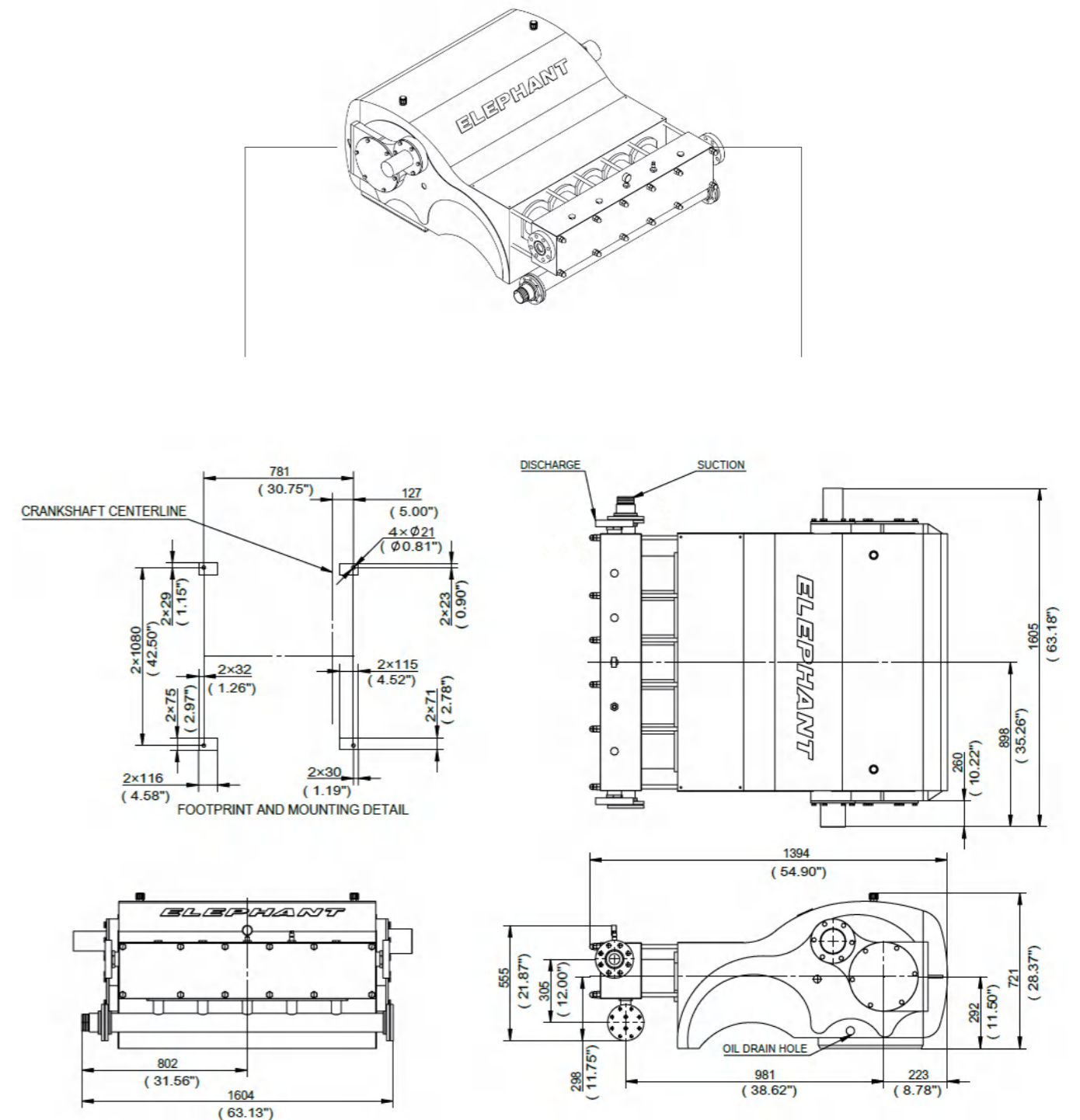
Fluid cylinder materials	Cast
Carbon Steel	Ductile Iron
Hi-Strength Carbon Alloy Steel	Aluminum Bronze
304 / 316L / 17-4PH / 2205 / 2507 Stainless Steel	

*Special materials are available upon request



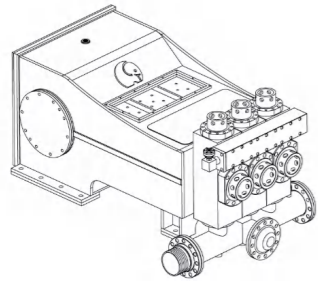
DW325

Engineering dimensional outline



DS440

Specifications



Design Standard	API-674, Third Edition
Configuration	Horizontal Triplex Plunger
Number of Plungers	3
Continuous Duty	350 BHP
Intermittent Duty	440 BHP
Stroke Length	7.0 Inches / 177.8 mm
Frame Load Rating	25000 lbs / 11340 kg
Pump Weight (Average)	5500 lbs / 2494.8 kg
Intermittent Duty Speed Rating	300 RPM
Continuous Duty Speed Rating	240 RPM
Minimum Speed	100 RPM
Mechanical Efficiency	90%
Lubrication System	Splash, Gravity Return
Lubrication System (Optional)	Pressurized
Crankcase Oil Capacity	14.25 Gallons / 53.94 L
Lube Oil Type	SAE 30
Fluid Temperature Range	-20 to 350 °F / -28~176°C
Valve Type	Disc Valve / Wear-resistant Valve

Performance Data (Metric)

Pump Model	Plunger Diameter (mm)	Displacement (L/REV)	Maximum Pressure (MPa)	Pump Capacity (LPM)@Input Speed (RPM)					
				100	150	200	240	250	300
DS44012	38	0.6079	69	60.6	90.8	121.1	147.6	151.4	181.7
DS44014	44	0.8278	69	83.3	124.9	166.5	200.6	208.2	249.8
DS44016	51	1.0810	55	109.8	162.8	215.7	261.2	268.7	325.5
DS44018	57	1.3683	43	136.3	204.4	272.5	329.3	340.7	412.6
DS44020	64	1.6889	35	170.3	253.6	336.9	405.0	423.9	507.2
DS44022	70	2.0439	29	204.4	306.6	408.8	492.1	511.0	613.2
DS44024	76	2.4322	24	242.2	363.4	488.3	582.9	609.4	730.5
DS44026	83	2.8546	21	283.9	427.7	571.5	685.1	715.4	855.4
DS44028	89	3.3104	18	333.1	495.8	662.4	794.9	828.9	991.7
DS44030	95	3.8005	16	378.5	571.5	760.8	912.2	950.0	1139.3
DS44032	102	4.3240	14	431.5	647.2	866.8	1037.1	1082.5	1298.3
DS44034	108	4.8815	12	488.3	734.3	976.5	1173.4	1218.8	1464.8
DS44036	114	5.4724	11	548.8	821.3	1093.9	1313.4	1366.4	1642.7
DS44038	121	6.0976	10	609.4	916.0	1218.8	1464.8	1525.4	1828.2
DS44040	127	6.6540	9	666.2	999.2	1332.3	1597.3	1665.4	1994.7
DS44042	133	7.4489	8	745.6	1116.6	1491.3	1786.5	1862.2	2233.2
DS44044	140	8.1748	7	817.6	1226.3	1635.1	1960.6	2043.9	2452.7
DS44046	146	8.9352	7	893.3	1339.9	1786.5	2146.1	2233.2	2679.8
DS44048	152	9.7290	6	972.7	1461.0	1945.5	2335.3	2433.8	2918.2
DS44050	159	10.5567	6	1056.0	1582.1	2112.0	2532.2	2638.1	3168.0

DS440

Performance Data

Pump Model	Plunger Diameter (in)	Displacement (GAL/REV)	Maximum Pressure (PSI)	Pump Capacity (GPM)@Input Speed (RPM)					
				100	150	200	240	250	300
DS44012	1.5	0.1606	10000	16	24	32	39	40	48
DS44014	1.75	0.2187	10000	22	33	44	53	55	66
DS44016	2	0.2856	7960	29	43	57	69	71	86
DS44018	2.25	0.3615	6300	36	54	72	87	90	109
DS44020	2.5	0.4462	5100	45	67	89	107	112	134
DS44022	2.75	0.54	4200	54	81	108	130	135	162
DS44024	3	0.6426	3540	64	96	129	154	161	193
DS44026	3.25	0.7542	3015	75	113	151	181	189	226
DS44028	3.5	0.8746	2600	88	131	175	210	219	262
DS44030	3.75	1.0041	2260	100	151	201	241	251	301
DS44032	4	1.1424	1990	114	171	229	274	286	343
DS44034	4.25	1.2897	1760	129	194	258	310	322	387
DS44036	4.5	1.4458	1570	145	217	289	347	361	434
DS44038	4.75	1.611	1400	161	242	322	387	403	483
DS44040	5	1.758	1275	176	264	352	422	440	527
DS44042	5.25	1.968	1155	197	295	394	472	492	590
DS44044	5.5	2.1598	1050	216	324	432	518	540	648
DS44046	5.75	2.3607	960	236	354	472	567	590	708
DS44048	6	2.5704	880	257	386	514	617	643	771
DS44050	6.25	2.7891	815	279	418	558	669	697	837

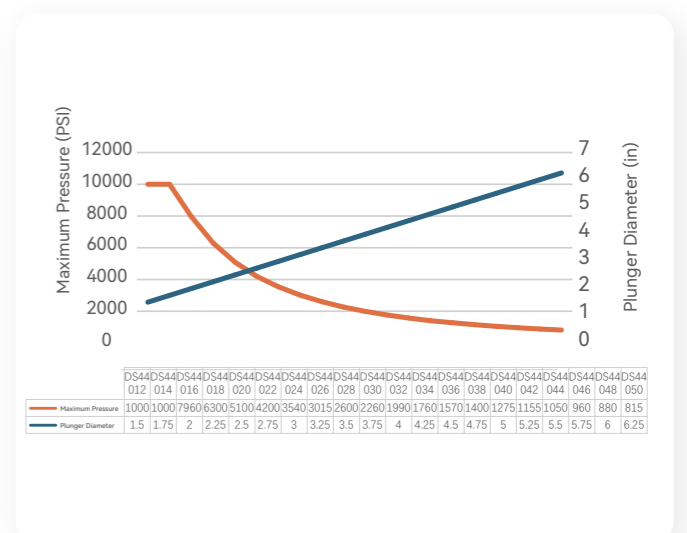
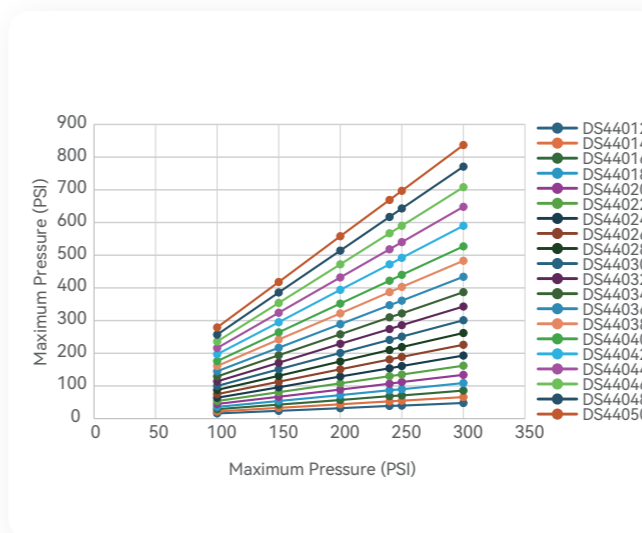
Standard connection sizes

*NPT connection available

Pump Model	Suction (in)	Discharge(in)
DS44012-DS44020	4.0	2.0
DS44022-DS44032	6.0	3.0
DS44034-DS44042	8.0	4.0
DS44044-DS44050	10.0	4.0

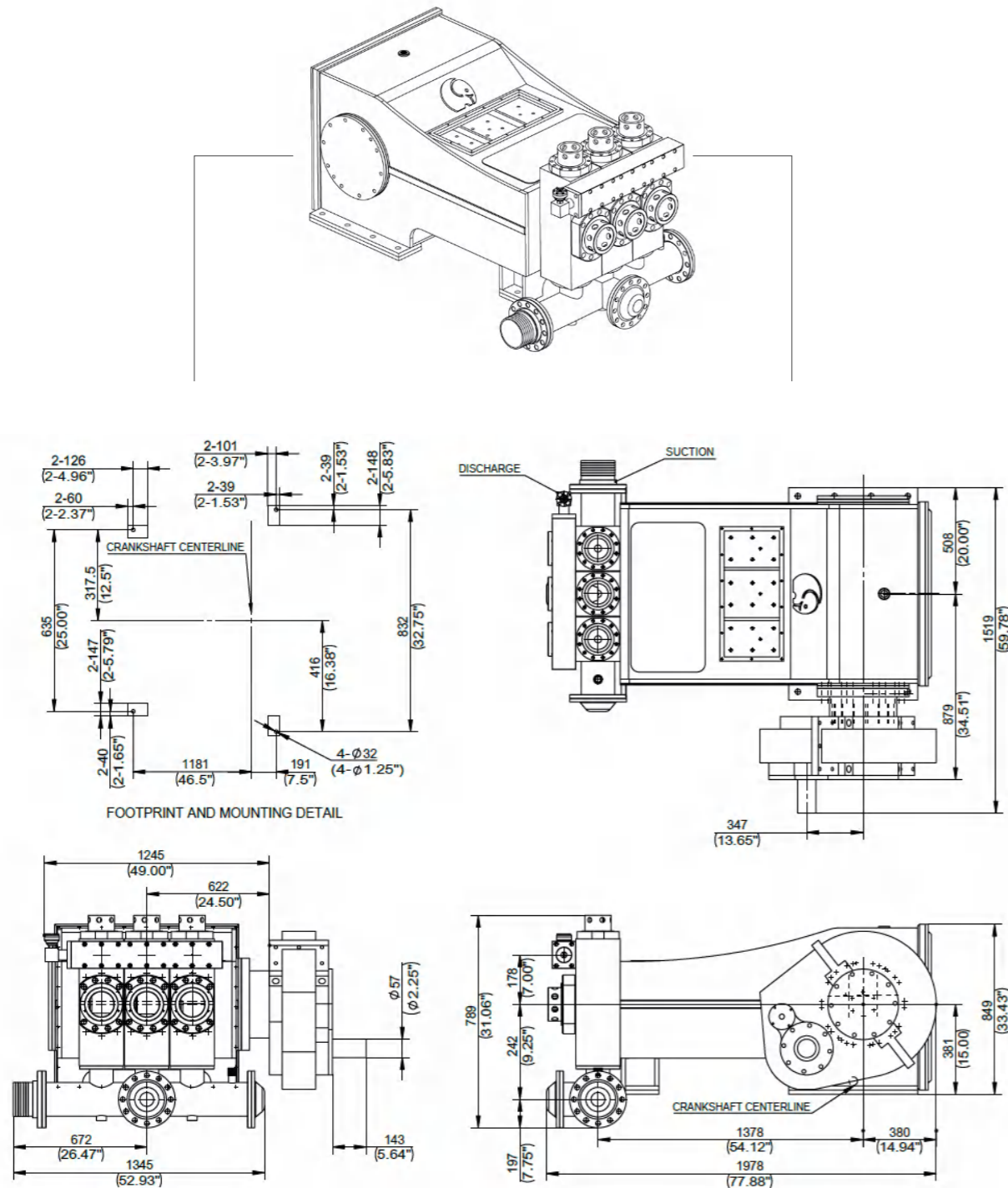
Fluid cylinder materials

Fluid cylinder materials	Cast
Carbon Steel	N/A
Fluid cylinder materials	
304 / 316L / 17-4PH / 2205 / 2507 Stainless Steel	



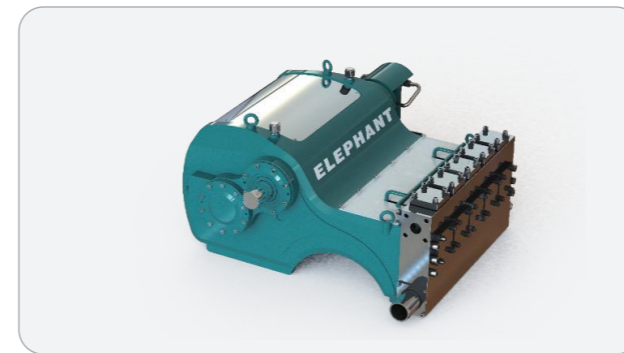
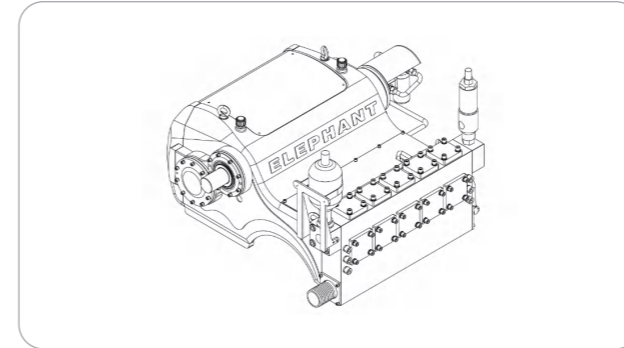
DS440

Engineering dimensional outline



DW400

Specifications



Design Standard	API-674, Third Edition
Configuration	Horizontal quintuple Plunger
Number of Plungers	5
Continuous Duty	422 BHP
Intermittent Duty	500 BHP
Stroke Length	3.8 Inches / 95 mm
Frame Load Rating	21,186 lbs / 9630 kg
Pump Weight (Average)	5,825 lbs / 2648 kg
Intermittent Duty Speed Rating	400 RPM
Continuous Duty Speed Rating	350 RPM
Minimum Speed	100 RPM
Mechanical Efficiency	90%
Lubrication System	Splash, Gravity Return
Lubrication System (Optional)	Pressurized
Crankcase Oil Capacity	38 Gallons / 143.83 L
Lube Oil Type	SAE30
Fluid Temperature Range	-20~350°F/-28~176°C
Valve Type	Disc Valve / Wear-resistant Valve

Performance Data (Metric)

Pump Model	Plunger Diameter (mm)	Displacement (L/REV)	Maximum Pressure (MPa)	Pump Capacity (LPM)@Input Speed (RPM)					
				100	200	300	330	350	400
DW40001	45	0.758	50	76	152	227	250	265	303
DW40002	50	0.928	41	95	190	284	306	325	371
DW40003	55	1.127	34	114	227	341	371	394	451
DW40004	60	1.34	28	133	265	397	443	469	538
DW40005	65	1.5	25	160	314	473	519	553	629
DW40006	70	1.82	21	182	352	549	602	640	731

DW400

Performance Data

Pump Model	Plunger Diameter (in)	Displacement (GAL/REV)	Maximum Pressure (PSI)	Pump Capacity (GPM)@Input Speed (RPM)					
				100	200	300	330	350	400
DW40001	1.8	0.2	7250	20	40	60	66	70	80
DW40002	2	0.245	5920	25	50	75	81	86	98
DW40003	2.2	0.2975	4880	30	60	90	98	104	119
DW40004	2.4	0.355	4090	35	70	105	117	124	142
DW40005	2.6	0.415	3490	42	83	125	137	146	166
DW40006	2.8	0.4825	3000	48	93	145	159	169	193

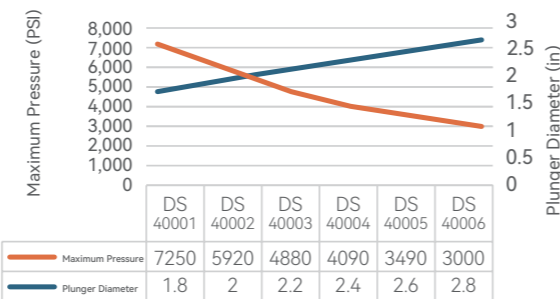
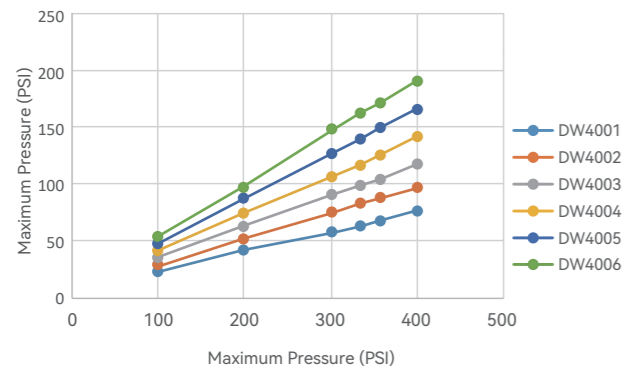
Standard connection sizes

*NPT connection available

Pump Model	Suction (in)	Discharge(in)
DW4001	3.5	1.8
DW4002	3.6	2
DW4003	4.0	2.2
DW4004	4.5	2.3
DW4005	4.7	2.5
DW4006	5.0	2.7

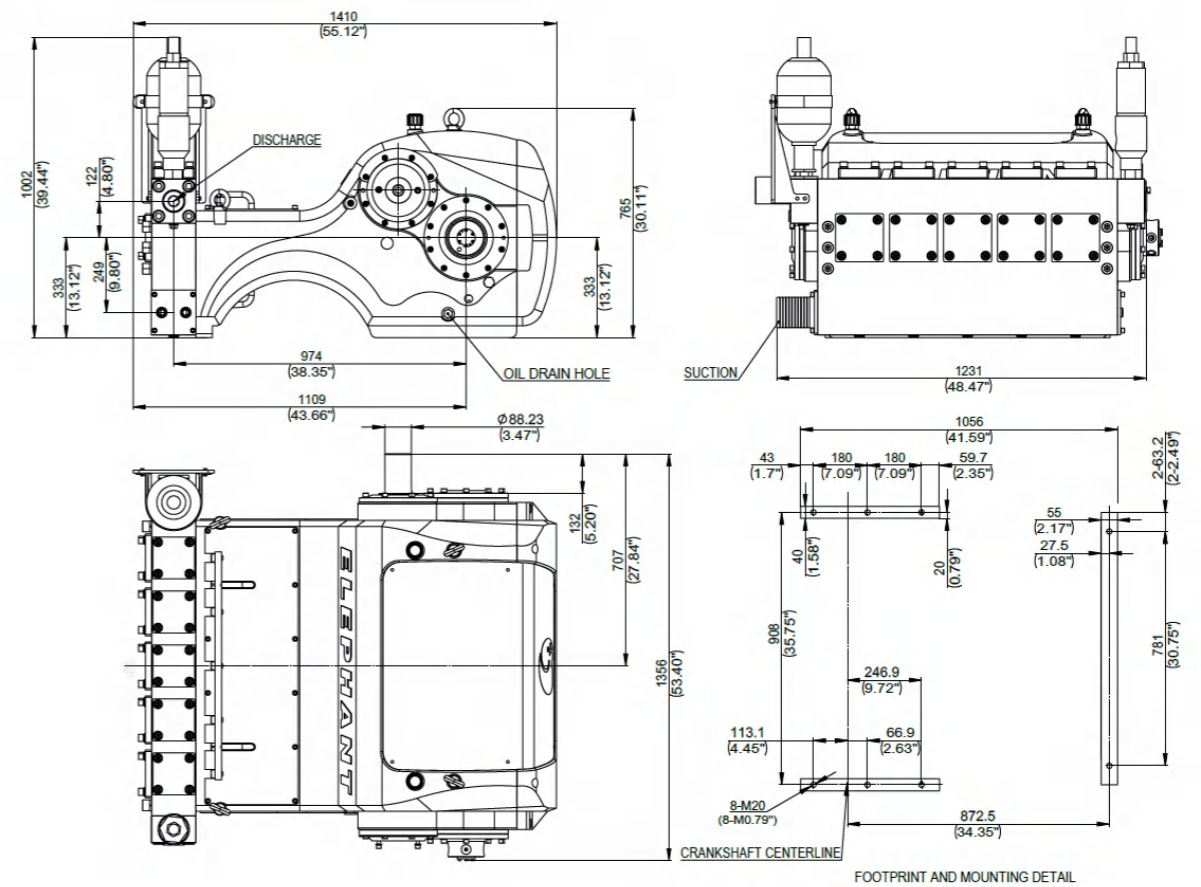
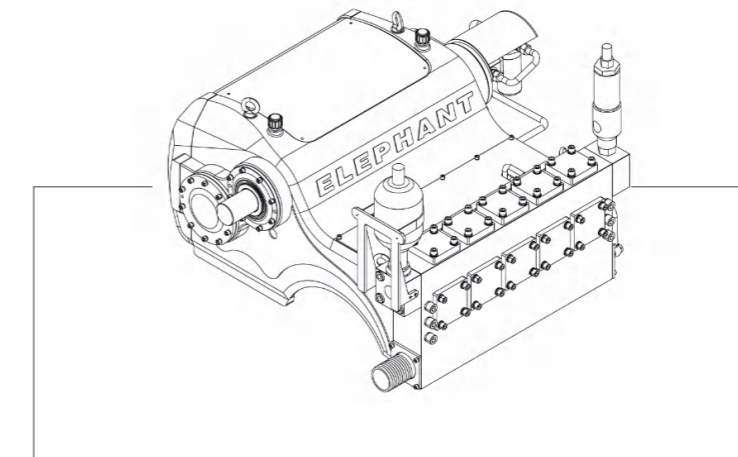
Fluid cylinder materials

Fluid cylinder materials	Cast
Carbon Steel	N/A
Fluid cylinder materials	
304 / 316L / 17-4PH / 2205 / 2507 Stainless Steel	



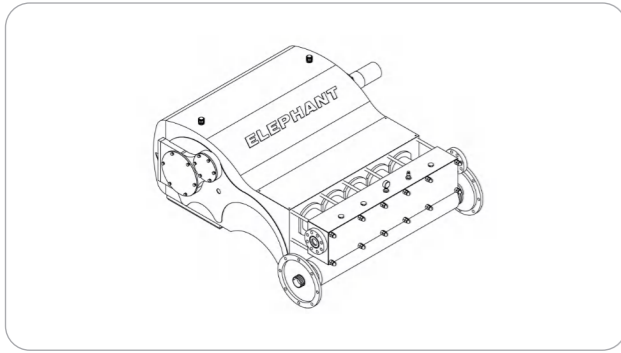
DW400

Engineering dimensional outline



DW800

Specifications



Design Standard	API-674, Third Edition
Configuration	Horizontal quintuple Plunger
Number of Plungers	5
Continuous Duty	650 BHP
Intermittent Duty	800 BHP
Stroke Length	7.0 Inches / 177.8 mm
Frame Load Rating	27,500 lbs / 12474 kg
Pump Weight (Average)	13,000 lbs / 5896.8 kg
Intermittent Duty Speed Rating	300 RPM
Continuous Duty Speed Rating	240 RPM
Minimum Speed	100 RPM
Mechanical Efficiency	90%
Lubrication System	Splash, Gravity Return
Lubrication System (Optional)	Pressurized
Crankcase Oil Capacity	38 Gallons / 143.83 L
Lube Oil Type	SAE 30
Fluid Temperature Range	-20~350°F/-28~176°C
Valve Type	Disc Valve / Wear-resistant Valve

Performance Data (Metric)

Pump Model	Plunger Diameter (mm)	Displacement (L/REV)	Maximum Pressure (MPa)	Pump Capacity (LPM)@Input Speed (RPM)					
				100	150	200	240	250	300
DW80014	44	1.3793	69	136.3	208.2	276.3	329.3	344.4	412.6
DW80016	51	1.8017	60	181.7	268.7	359.6	431.5	450.4	541.3
DW80018	57	2.2801	48	227.1	340.7	454.2	548.8	571.5	685.1
DW80020	64	2.8149	39	280.1	423.9	564.0	673.7	704.0	844.1
DW80022	70	3.4061	32	340.7	511.0	681.3	817.6	851.6	1022.0
DW80024	76	4.0537	27	405.0	609.4	810.0	972.7	1014.4	1215.0
DW80026	83	4.7574	23	476.9	715.4	950.0	1143.1	1188.5	1426.9
DW80028	89	5.5174	20	552.6	828.9	1105.2	1324.8	1377.7	1654.0
DW80030	95	6.3338	17	632.1	950.0	1268.0	1521.6	1582.1	1900.1
DW80032	102	7.2066	15	719.2	1082.5	1442.1	1729.7	1801.7	2161.2
DW80034	108	8.1355	13	813.8	1218.8	1627.6	1953.1	2032.5	2441.3
DW80036	114	9.1207	12	912.2	1366.4	1824.4	2187.7	2278.6	2736.6
DW80038	121	10.1623	11	1014.4	1525.4	2032.5	2437.5	2539.7	3046.9
DW80040	127	11.2604	10	1124.1	1688.1	2252.1	2702.5	2816.0	3376.2
DW80042	133	12.4144	9	1241.5	1862.2	2483.0	2978.8	3103.7	3724.4
DW80044	140	13.6249	8	1362.6	2043.9	2725.2	3270.2	3406.5	4087.8
DW80046	146	14.8917	7	1487.5	2233.2	2978.8	3573.0	3724.4	4466.3
DW80048	152	16.2149	7	1620.0	2433.8	3243.7	3891.0	4053.7	4863.7
DW80050	159	17.5942	6	1760.0	2638.1	3520.1	4224.1	4398.2	5280.1

DW800

Performance Data

Pump Model	Plunger Diameter (in)	Displacement (GAL/REV)	Maximum Pressure (PSI)	Pump Capacity (GPM)@Input Speed (RPM)					
				100	150	200	240	250	300
DW80014	1.75	0.3644	10000	36	55	73	87	91	109
DW80016	2	0.476	8750	48	71	95	114	119	143
DW80018	2.25	0.6024	6920	60	90	120	145	151	181
DW80020	2.5	0.7437	5600	74	112	149	178	186	223
DW80022	2.75	0.8999	4630	90	135	180	216	225	270
DW80024	3	1.071	3890	107	161	214	257	268	321
DW80026	3.25	1.2569	3310	126	189	251	302	314	377
DW80028	3.5	1.4577	2860	146	219	292	350	364	437
DW80030	3.75	1.6734	2490	167	251	335	402	418	502
DW80032	4	1.904	2190	190	286	381	457	476	571
DW80034	4.25	2.1494	1940	215	322	430	516	537	645
DW80036	4.5	2.4097	1730	241	361	482	578	602	723
DW80038	4.75	2.6849	1550	268	403	537	644	671	805
DW80040	5	2.975	1400	297	446	595	714	744	892
DW80042	5.25	3.2799	1270	328	492	656	787	820	984
DW80044	5.5	3.5997	1160	360	540	720	864	900	1080
DW80046	5.75	3.9344	1060	393	590	787	944	984	1180
DW80048	6	4.284	970	428	643	857	1028	1071	1285
DW80050	6.25	4.6484	900	465	697	930	1116	1162	1395

Standard connection sizes

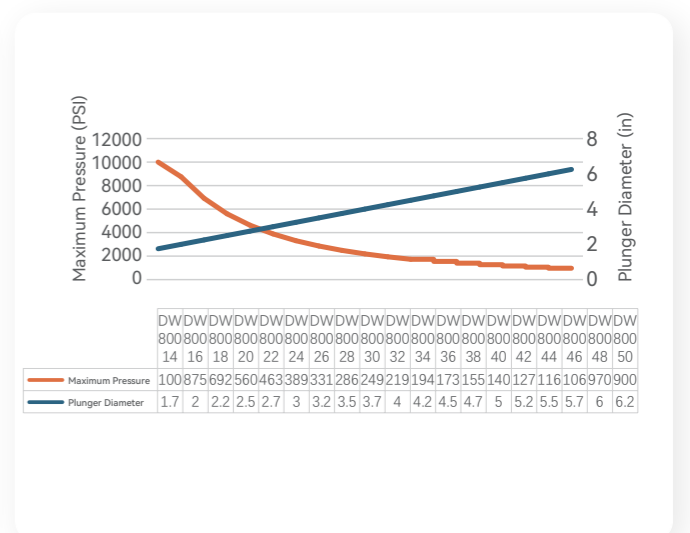
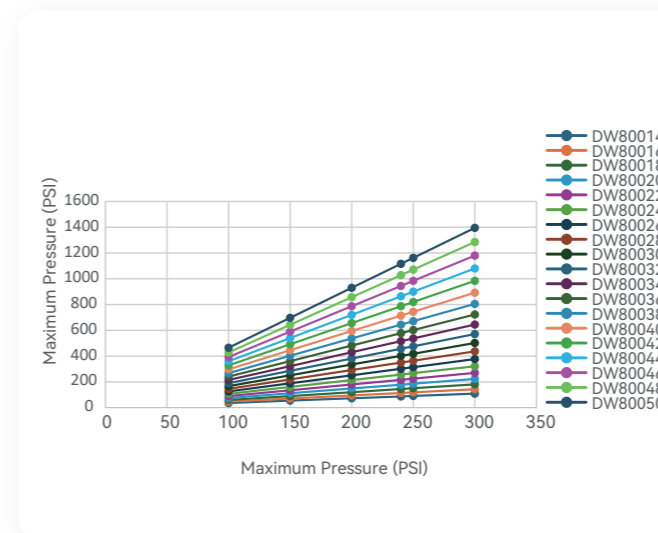
*NPT connection available

Pump Model	Suction (in)	Discharge(in)
DW80014-DW80020	4.0	3.0
DW80014-DW80024	6.0	3.0
DW80026-DW80036	8.0	4.0
DW80038-DW80042	10.0	6.0
DW80044-DW80050	12.0	6.0

Fluid cylinder materials

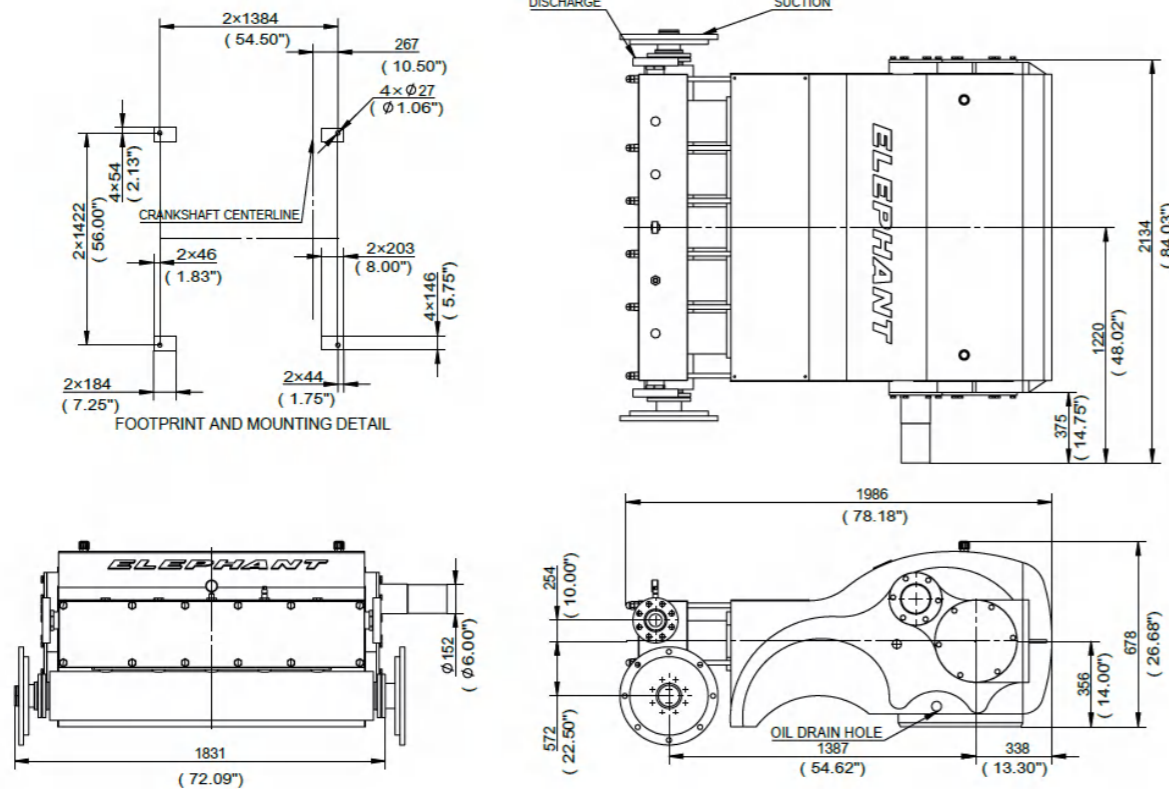
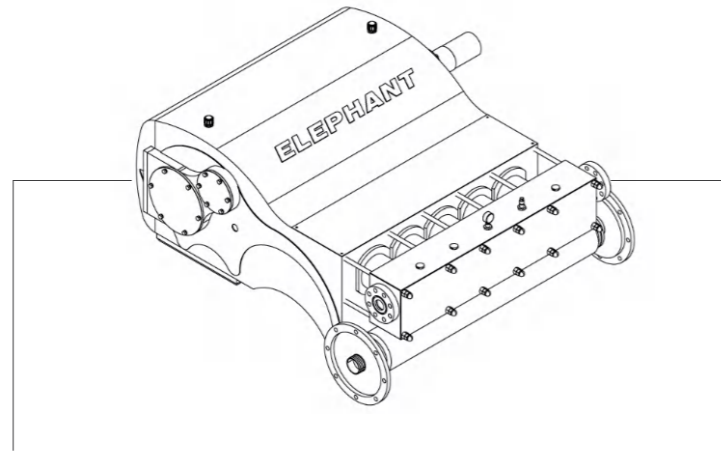
Fluid cylinder materials	Cast
Carbon Steel	N/A
Fluid cylinder materials	
304 / 316L / 17-4PH / 2205 / 2507 Stainless Steel	

*Special materials are available upon request



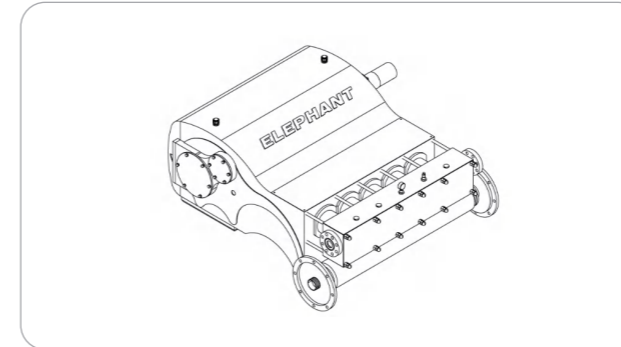
DW800

Engineering dimensional outline



DW1000

Specifications



Design Standard	API-674, Third Edition
Configuration	Horizontal quintuple Plunger
Number of Plungers	5
Continuous Duty	700 BHP
Intermittent Duty	1000 BHP
Stroke Length	8.0 Inches / 203.2 mm
Frame Load Rating	30,000 lbs / 13608 kg
Pump Weight (Average)	13,000 lbs / 5896.8 kg
Intermittent Duty Speed Rating	300 RPM
Continuous Duty Speed Rating	210 RPM
Minimum Speed	100 RPM
Mechanical Efficiency	90%
Lubrication System	Splash, Gravity Return
Lubrication System (Optional)	Pressurized
Crankcase Oil Capacity	38 Gallons / 143.83 L
Lube Oil Type	SAE30
Fluid Temperature Range	-20~350°F / -28~176°C
Valve Type	Disc Valve / Wear-resistant Valve

Performance Data (Metric)

Pump Model	Plunger Diameter (mm)	Displacement (L/REV)	Maximum Pressure (MPa)	Pump Capacity (LPM)@Input Speed (RPM)					
				100	150	200	210	250	300
DW100014	44	1.5765	69	159.0	234.7	314.2	329.3	393.6	473.1
DW100016	51	2.0590	66	204.4	310.4	412.6	431.5	514.8	617.0
DW100018	57	2.6060	52	261.2	389.9	522.3	548.8	651.0	783.5
DW100020	64	3.2173	42	321.7	484.5	643.5	677.5	806.2	965.2
DW100022	70	3.8929	35	389.9	582.9	779.7	817.6	972.7	1169.6
DW100024	76	4.6328	29	461.8	696.4	927.3	972.7	1158.2	1389.1
DW100026	83	5.4372	25	545.0	813.8	1086.3	1143.1	1358.8	1631.3
DW100027	86	5.8633	23	586.7	881.9	1173.4	1230.1	1464.8	1760.0
DW100028	89	6.3058	22	632.1	946.3	1260.4	1324.8	1578.3	1892.5
DW100030	95	7.2388	19	722.9	1086.3	1449.7	1521.6	1809.2	2172.6
DW100032	102	8.2362	16	825.1	1233.9	1646.5	1729.7	2059.0	2471.6
DW100034	108	9.2979	15	931.1	1392.9	1858.4	1953.1	2324.0	2789.5
DW100036	114	10.4239	13	1040.9	1563.2	2085.5	2187.7	2607.9	3126.4
DW100037	117	11.0109	12	1101.4	1650.3	2199.1	2308.9	2751.7	3304.3
DW100038	121	11.6143	12	1162.0	1741.1	2324.0	2437.5	2903.1	3486.0
DW100040	127	12.8690	11	1286.9	1930.4	2573.8	2702.5	3217.3	3860.7
DW100042	133	14.1881	10	1419.4	2127.2	2838.8	2978.8	3546.5	4258.1
DW100044	140	15.5715	9	1555.6	2335.3	3115.1	3270.2	3894.8	4670.7
DW100046	146	17.0193	8	1703.3	2551.1	3402.7	3573.0	4254.3	5106.0
DW100048	152	18.5314	7	1854.7	2778.2	3705.5	3891.0	4632.8	5560.2
DW100050	159	20.1078	7	2009.8	3016.6	4023.5	4224.1	5026.5	6033.3

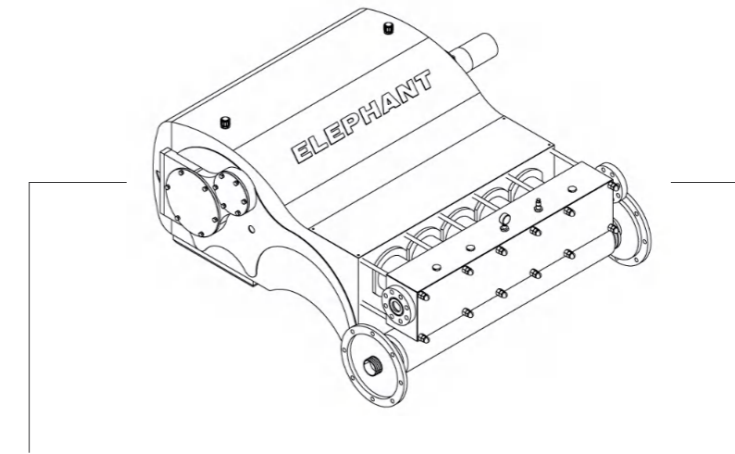
DW1000

Performance Data

Pump Model	Plunger Diameter (in)	Displacement (GAL/REV)	Maximum Pressure (PSI)	Pump Capacity (GPM)@Input Speed (RPM)					
				100	150	200	210	250	300
DW100014	1.75	0.4165	10000	42	62	83	87	104	125
DW100016	2	0.544	9550	54	82	109	114	136	163
DW100018	2.25	0.6885	7500	69	103	138	145	172	207
DW100020	2.5	0.85	6125	85	128	170	179	213	255
DW100022	2.75	1.0285	5025	103	154	206	216	257	309
DW100024	3	1.224	4250	122	184	245	257	306	367
DW100026	3.25	1.4365	3620	144	215	287	302	359	431
DW100027	3.375	1.5491	3355	155	233	310	325	387	465
DW100028	3.5	1.666	3125	167	250	333	350	417	500
DW100030	3.75	1.9125	2720	191	287	383	402	478	574
DW100032	4	2.176	2390	218	326	435	457	544	653
DW100034	4.25	2.4565	2110	246	368	491	516	614	737
DW100036	4.5	2.754	1890	275	413	551	578	689	826
DW100037	4.625	2.9091	1790	291	436	581	610	727	873
DW100038	4.75	3.0685	1690	307	460	614	644	767	921
DW100040	5	3.4	1530	340	510	680	714	850	1020
DW100042	5.25	3.7485	1390	375	562	750	787	937	1125
DW100044	5.5	4.114	1260	411	617	823	864	1029	1234
DW100046	5.75	4.4965	1160	450	674	899	944	1124	1349
DW100048	6	4.896	1060	490	734	979	1028	1224	1469
DW100050	6.25	5.3125	980	531	797	1063	1116	1328	1594

DW1000

Engineering dimensional outline



Standard connection sizes

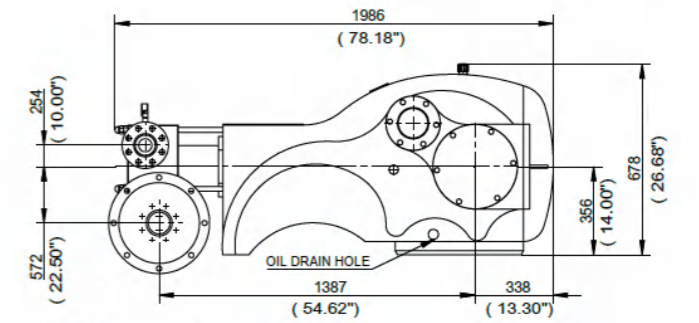
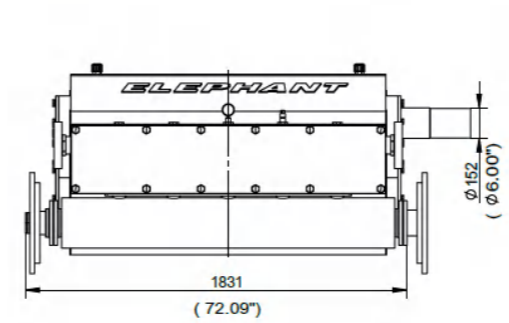
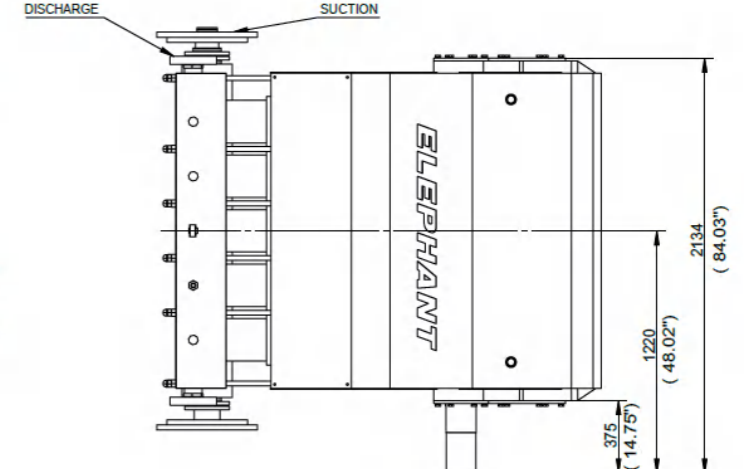
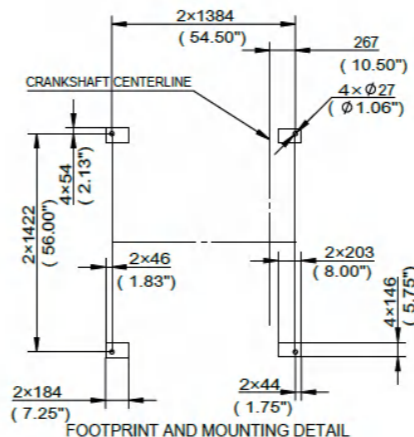
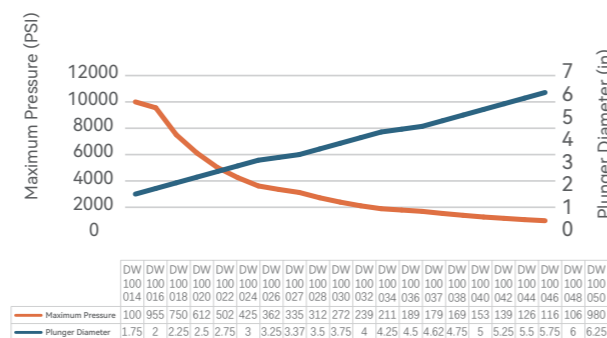
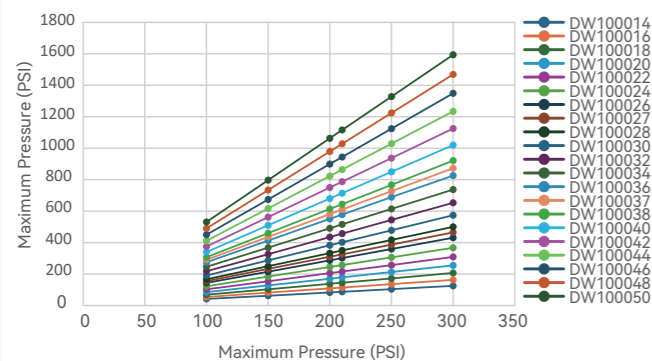
*NPT connection available

Pump Model	Suction (in)	Discharge(in)
DW100014-DW100020	4.0	3.0
DW100014-DW100024	6.0	3.0
DW100026-DW100034	8.0	4.0
DW100036-DW100040	10.0	6.0
DW100042-DW100050	12.0	6.0

Fluid cylinder materials

Fluid cylinder materials	Cast
Carbon Steel	N/A
Fluid cylinder materials	
304 / 316L / 17-4PH / 2205 / 2507 Stainless Steel	

*Special materials are available upon request



Accessories

Integrated One-way Vertical Combinaton Valve

Features

- Integrated vertical inlet and outlet combination valve, easy to install and disassemble.
- One-way valve core and valve seat are made of high-strength, corrosion-resistant steel with strong pressure-bearing capacity.
- Valve rubber sheet is made of high-pressure composite valve, has large bearing surface with seat, more impact resistance, long overall service life.

Application

- Applicable to the outlet pressure ≤ 70 MPa.
- Available for pumping a variety of corrosive, high temperature fluids.



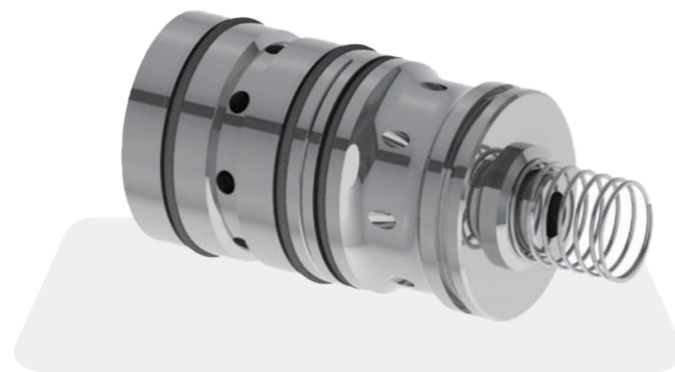
Integrated One-way Horizontal Combinaton Valve

Features

- Integrated horizontal inlet and outlet combination valve, easy to install and disassemble.
- One-way valve core and valve seat are made of high-strength, corrosion-resistant steel.
- The grinding surface is hard sealed, has stronger bearing capacity. Valve rubber sheet has large bearing surface with seat, more impact resistance, overall service life.

Application

- Applicable to the outlet pressure ≤ 300 MPa.
- Available for pumping a variety of corrosive, high temperature fluids.



Steel Ball Vertical Combination Valve

Features

- The steel ball and valve seat are hard sealed with a specially designed angle on the valve seat hole, allowing for more sealing contact and better sealing performance.
- A dedicated noise-reducing pad is also installed to effectively reduce the sound of steel ball impacts.

Application

- Applicable to the outlet pressure ≤ 20 MPa.
- Available for pumping mud.



Piston

Features

- Adopting a polymer sandwiched rubber structure. The overall wear resistance and sealing performance are higher, resulting in a longer service life.

Application

- Applicable to the outlet pressure ≤ 20 MPa.
- Available for pumping mud, clean water, and corrosive fluids.



Accessories

Ceramic Plunger

Features

- The materials mainly consist of zirconia with better wear, corrosion and hightemperature resistance, as well as ordinary ceramics used in low-pressure conditions.
- Suitable ceramic materials can be adapted according to different working conditions, thus ensuring long overall service life.
- Ceramic and plunger tail are designed with high strength structure to make theconnection between ceramic and metal more reliable, and to add metalstructure to the tail of the plunger for easier disassembly and assembly.

Application

- Available for pumping various fluids that require wear resistance, corrosion resistance, and high temperature resistance.



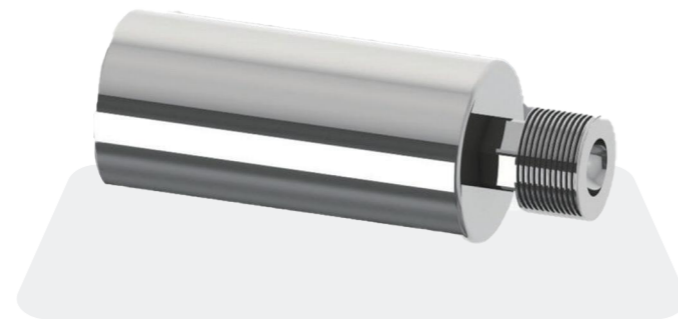
Sprayed Plunger

Features

- High-strength structural steel with high-precision surface.
- Surface can be sprayed with different alloys such as nickel and tungsten carbideaccording to different media conditions.
- Long overall service life.

Application

- Available for pumping high temperature, high pressure, impure and corrosive fluids.



V-shaped Polymer Seal

Features

- Mainly composed of guide bush, V-shaped seal, packing gland and tighteningnut.
- The materials used are high-polymer polyethylene, which have high reliability, low leakage and long service life.

Application

- Applicable to the outlet pressure ≤ 300 MPa.
- Available for pumping various corrosive and high-temperature fluids.



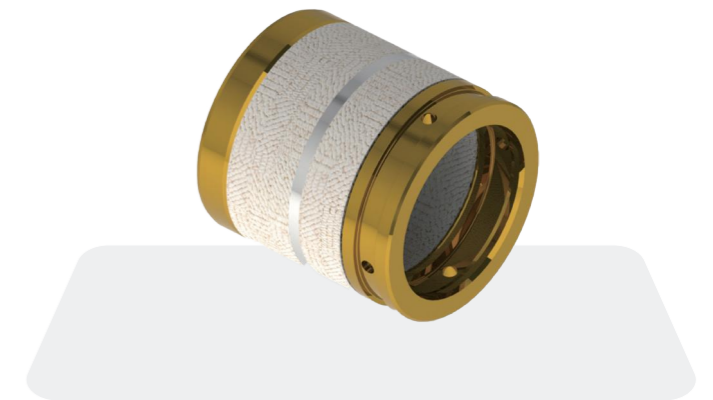
Packing Seal

Features

- Mainly composed of front and rear orientation sets, packings, intermediate rings, etc., and different numbers of packings are matched according different pressure levels.
- The materials used are aramid and PTFE, which have high reliability, low leakage, and long service life.

Application

- Applicable to the outlet pressure ≤ 175 MPa.
- Available for pumping high temperature, high pressure, low particle fluids.



Accessories

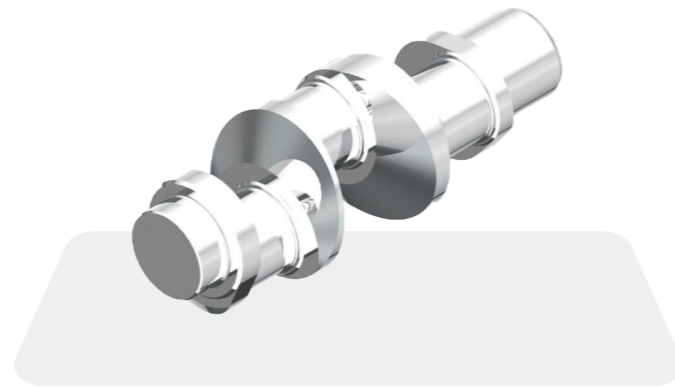
Crankshaft

Features

- The structural forms mainly adopt bent and curved types.
- The shape design includes ellipsoidal and circular shapes, and is tested for dynamic balance. Depending on the bearing capacity, it can be made of integral castings or forged ones.
- Materials include QT700-2, 42CrMo, etc.

Application

- Strong and durable. Transferring the mechanical energy of the power source to the connecting rod and converting the mechanical energy into hydraulic energy.



Connecting Rod

Features

- Integrated casting or forging.
- Designed with split or integral size heads.
- Inner hole can be installed with copper sleeve, rolling bearing, etc.

Application

- According to the different adaptations of the plunger thrust, connecting crankshaft to the crosshead in the crankcase to convert rotary motion into reciprocating motion.



Hydraulic Ends

Features

- Originally designed and manufactured, matched designed according to different pressures, flow rates, and fluids. Currently, our products can accommodate flow rates up to 3500 lpm and pressures up to 300 MPa.
- Materials are matched according to the pumping fluids, including QT450-10 cast iron, 20/45 carbon steel, 304/316/316L austenitic stainless steel, 410/1Cr13/3Cr13/9Cr18/17-4PH martensitic stainless steel, and 2205 duplex stainless steel. They are specially processed to ensure long service life, wear resistance, and corrosion resistance.
- The hydraulic end structure is designed in 3D and analyzed by finite element analysis according to the principles of convenience for disassembly and assembly, novel styles, and suitable materials.

Application

- Flexibly adapted according to different working conditions.
- Easy to disassemble and maintain.
- Long service life.

