

Disclaimer:

Due to continuous technological updates, materials and technical specifications are subject to change without notice. The actual product supply status shall be subject to the sales contract. Samples are for reference only.

Elephant Machinery CO.,LTD.

No. 58, Guanhu West Road, Jianhu County, Yancheng City, Jiangsu Province
0515-80603039

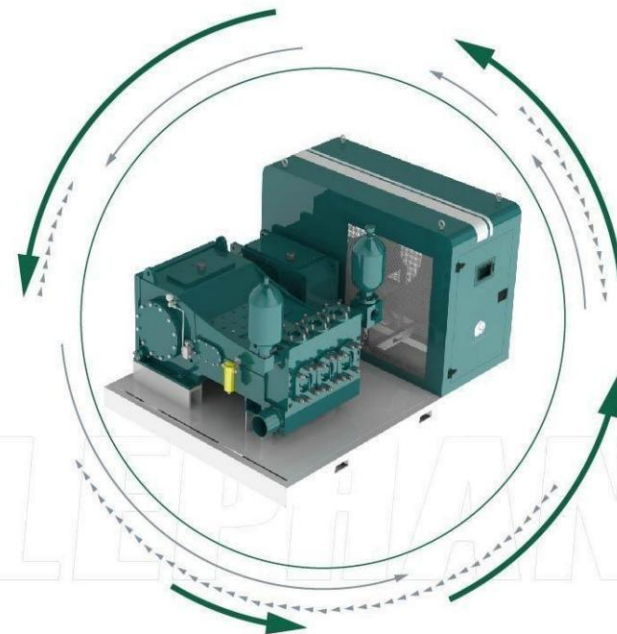
Room 909, Building 4, Yuhua Living Room, No. 109, Software Avenue,
Yuhuatai District, Nanjing City, Jiangsu Province
025-52891797

www.c-emc.com

Version Number: 202407



WeChat Official Account



Reciprocating Pumps

Mud Pump Series

Convenient · Reliable · Efficient · Intelligent

Contents

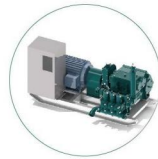
Hydraulic Motor Drive

BW-75Q	03	DXBH-200	19
BW-100	04	DXBH-300	20
BW-100Q	05	DXB-300/8	21
BW-105Q	06	DXB-330/10	22
BW-150Q	07	DXBH-400	23
BW-160	08	DXB-500	24
BW-180	09	DXB-500/10	25
BW-320	10	DXB-600	26
BWF-250	11	DXBH-600	27
BW-400	12	DXB-800	28
BWF-400	13	DXBH-800	29
BW-450	14	DXBH-1000Y	30
BW-600	15	DXBH-1200	31
BW-800	16		
BW-1000	17		
YBW-1200	18		



Electric Motor Drive

DBW-100	32		
DBW-100Q	33		
DBW-160	34		
DXBH-200E	35		
DBW-250	36		
DBWF-250	37		
DXBH-300EQ	38		
DBW-320	39		
DXBH-400E	40		
DBW-600	41		
DXBH-600E	42		
DBW-800	43		
DXBH-800E	44		
DBW-850/5S	45		
DBW-1000	46		
DBW-1200	47		
DBWH-1500	48		
DBWH-3000	49		



Diesel Engine Drive

CBW-100Q	50		
CBW-105Q	51		
CBW-150Q	52		
CBWF-250	53		
CBW-450/5A	54		
CBW-600	55		
CBW-800	56		
CBW-1000	57		
CBW-1200	58		
CBWH-1200	59		
CBW-1500	60		
CBW-1500H	61		
CBWH-1500	62		
CBW-2000	63		
CBWH-2000	64		
CBW-2200	65		
CBW-2500	66		
CBWH-2500	67		
CBW-2800	68		
CBWH-3000	69		
CBW-3200	70		



Company Profile

Elephant Machinery Co., Ltd. (hereinafter referred to as Elephant Machinery), founded in 2008 and covering an area of 20,000 square meters, is a comprehensive enterprise integrating the R&D, manufacturing, sales, and service of reciprocating pumps across all application fields. The company holds multiple invention patents and has obtained certifications including API Q1 Quality Management System, ISO 9001 Quality Management System, ISO 14001 Environmental Management System, Enterprise Intellectual Property Management System, Enterprise Integrity Management System, After-Sales Service Evaluation System, Green Factory, Five-Star Green Supply Chain Rating, AAA Corporate Credit Evaluation, and EU CE Certification. It has been recognized as a National High-Tech Enterprise, Jiangsu Provincial "Specialized and Sophisticated" Enterprise, and Jiangsu Provincial Advanced-Level Intelligent Factory.

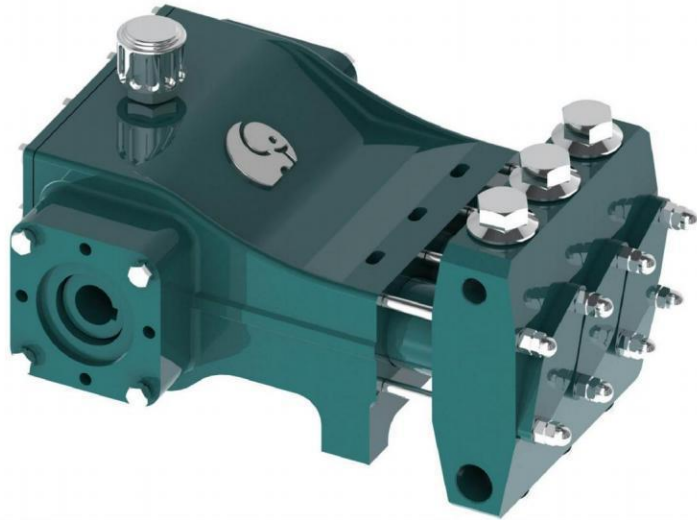
Elephant Machinery specializes in the production of reciprocating plunger pumps, piston pumps, and diaphragm pumps, with designs and manufacturing processes conforming to Chinese national standards GB/T9234-2018 and GB/T7782-2020, as well as international standards API 674, API 675, and ISO 13710:2004, covering flow and pressure requirements across a wide range of applications. Our products are suitable for industries including oilfield water injection and pressurization, chemical media transfer, pharmaceutical precise metering, trenchless directional drilling, mining and geothermal drilling, coal mine fracturing and grouting, environmental wastewater treatment, high pressure water jetting, and food and beverage processing, delivering stable and reliable performance.

Elephant Machinery's products mainly consist of three series: plunger pumps, piston pumps, and diaphragm pumps, with power configurations including hydraulic motors, electric motors, and diesel engines. By adopting new technologies, new materials, and new processes, combined with advanced machining and testing equipment, our products feature compact structure, light weight, small footprint, appealing appearance, stable performance, long service life of wearing parts, and easy installation and maintenance.





BW-75Q (Hydraulic Motor Driven)



The BW-75Q reciprocating pump is a horizontal triplex reciprocating single-acting piston pump driven by a hydraulic motor. It is mainly used for portable rock core drilling machines and can also be used for other applications such as grouting, mine drainage, and long-distance water transportation. The pump can adjust speeds infinitely with the hydraulic motor, making it suitable for drilling and backwashing of different diameters. In its design, new concepts, structures, materials, and processes have been used, resulting in a compact structure, light weight, small volume, and attractive appearance. The pump body, crankshaft, connecting rod, crosshead, pump head, and related components are highly serialized and standardized, making installation and maintenance more convenient. The pump has a long service life for wearing parts and high reliability.

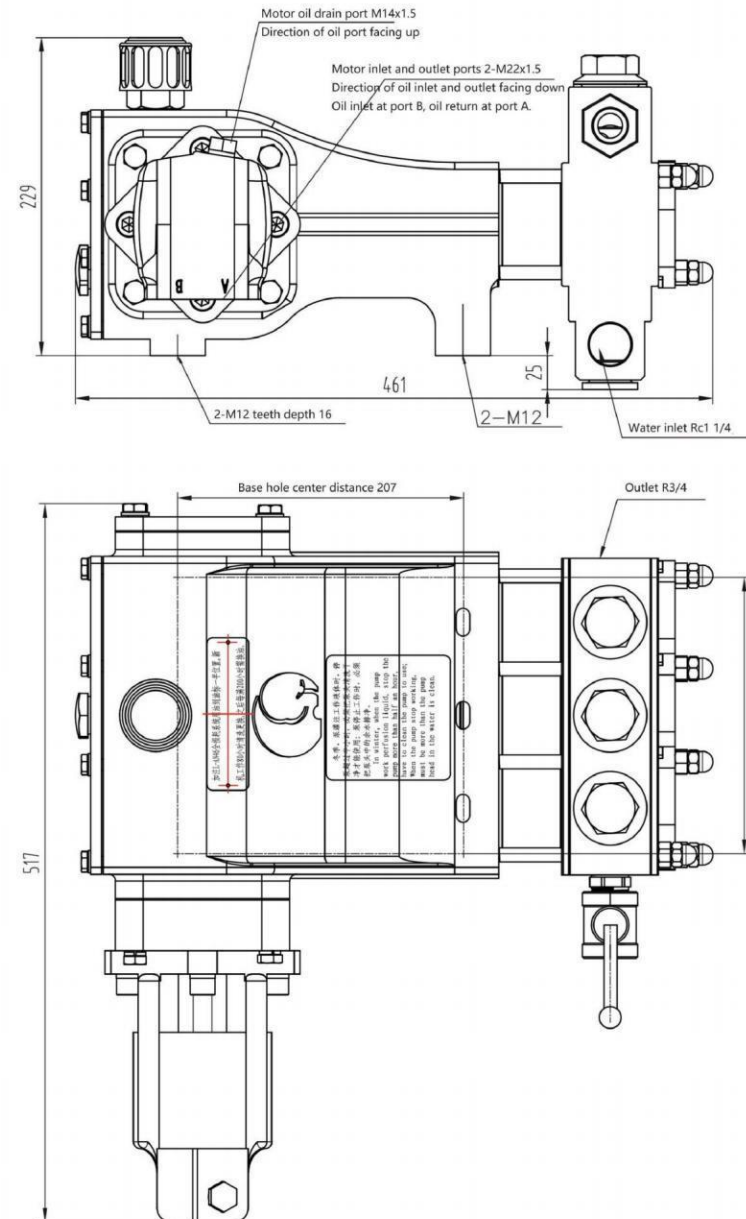
Horizontal triplex reciprocating single acting piston pump

Stroke (mm)	40
Cylinder diameter (mm)	50
Flow (L/min)	75
Pressure (MPa)	6
Input speed (r/min)	320
Input power (KW)	9
Dimensions (mm)	461 × 517 × 254
Weight (kg)	72
Hydraulic motor model	2K604-0043
Hydraulic motor pressure (MPa)	17
Maximum motor flow (L/min)	45

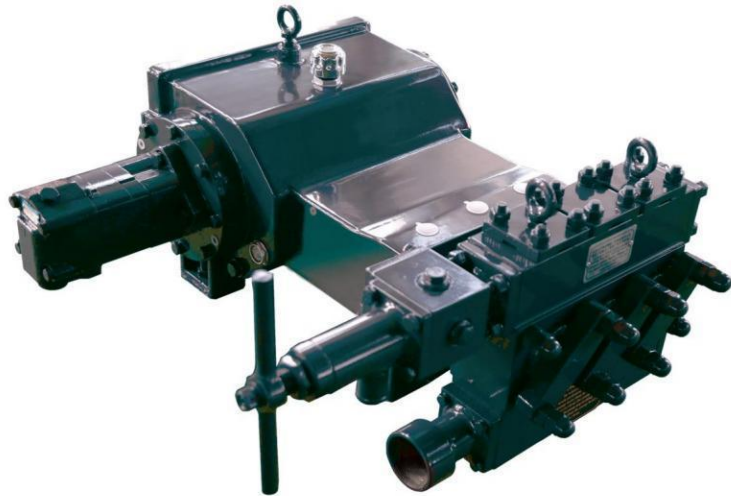
The product specifications and images provided may change due to design improvements and upgrades. Please feel free to inquire for more information.



BW-75Q Outline Dimension Drawing



BW-100 (Hydraulic Motor Driven)

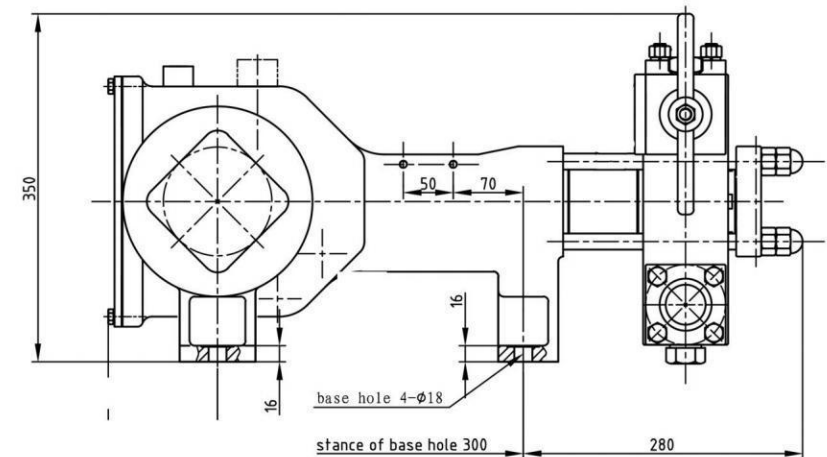
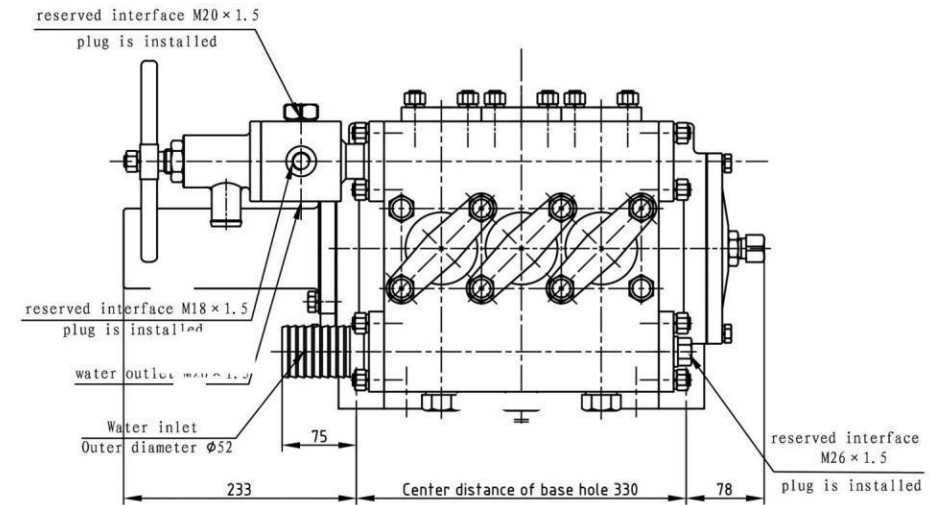


The BW-100 reciprocating pump is a horizontal triplex reciprocating single-acting piston pump driven by a hydraulic motor. It is mainly used in conjunction with non-excavation drilling machines of around 10 tons, and can also be used for grouting, mine drainage, long-distance water delivery, and other purposes. The pump can achieve stepless speed regulation through the hydraulic motor, and is suitable for drilling and backhaul with different bore diameters. The design concept features new structures, materials, and processes, resulting in a compact structure, light weight, small size, and attractive appearance. The pump body, crankshaft, connecting rod, crosshead, pump head, and related parts are standardized and universal, which facilitates installation and maintenance. The service life of vulnerable components is long, and the reliability is high.

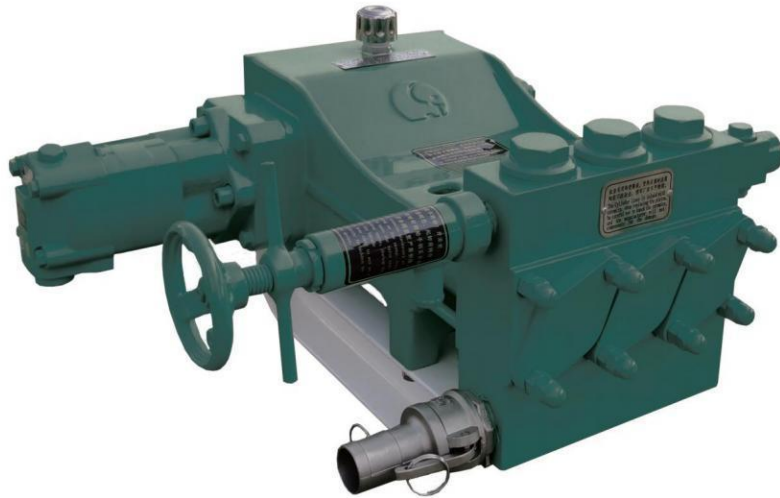
Horizontal triplex reciprocating single acting piston pump	
Stroke (mm)	60
Cylinder diameter (mm)	55
Flow (L/min)	100
Pressure (MPa)	7
Input speed (r/min)	240
Input power (KW)	14
Dimensions (mm)	690 × 641 × 350
Weight (kg)	175
Hydraulic motor model	2K604-0046
Hydraulic motor pressure (MPa)	17
Maximum motor flow (L/min)	65

The product specifications and images provided may change due to design improvements and upgrades. Please feel free to inquire for more information.

BW-100 Outline Dimension Drawing



BW-100Q (Hydraulic Motor Driven)

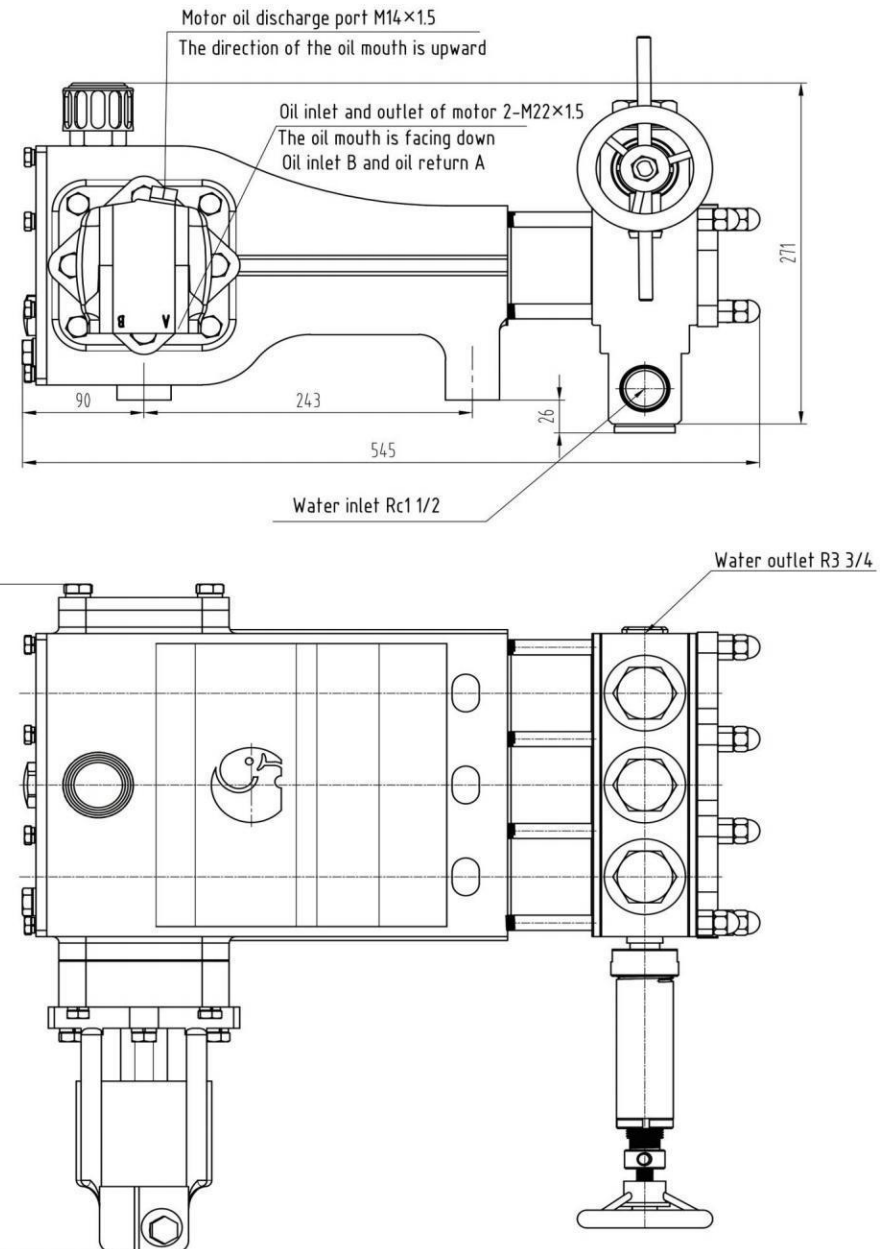


The BW-100Q reciprocating pump is a horizontal triplex reciprocating single-acting piston pump that is hydraulically driven. It is mainly used in conjunction with non-excavation drilling machines of about 10 tons, but can also be used for other purposes such as grouting, mine drainage, and long-distance water delivery. The pump can be adapted to different drill hole diameters and backhaul by continuously variable speed through the hydraulic motor. The design incorporates new concepts, new structures, new materials, and new processes. The pump has a compact structure, light weight, small size, and a beautiful appearance. The pump body, crankshaft, connecting rod, crosshead, pump head, and related components are as much as possible standardized and universal, making installation and maintenance convenient. The life of vulnerable parts is long and the reliability is high.

Horizontal triplex reciprocating single acting piston pump	
Stroke (mm)	48
Cylinder diameter (mm)	55
Flow (L/min)	100
Pressure (MPa)	7
Input speed (r/min)	295
Input power (KW)	13
Dimensions (mm)	545×532×285
Weight (kg)	90
Hydraulic motor model	2K604-0045
Hydraulic motor pressure (MPa)	17
Maximum motor flow (L/min)	58

The product specifications and images provided may change due to design improvements and upgrades. Please feel free to inquire for more information.

BW-100Q Outline Dimension Drawing



BW-105Q

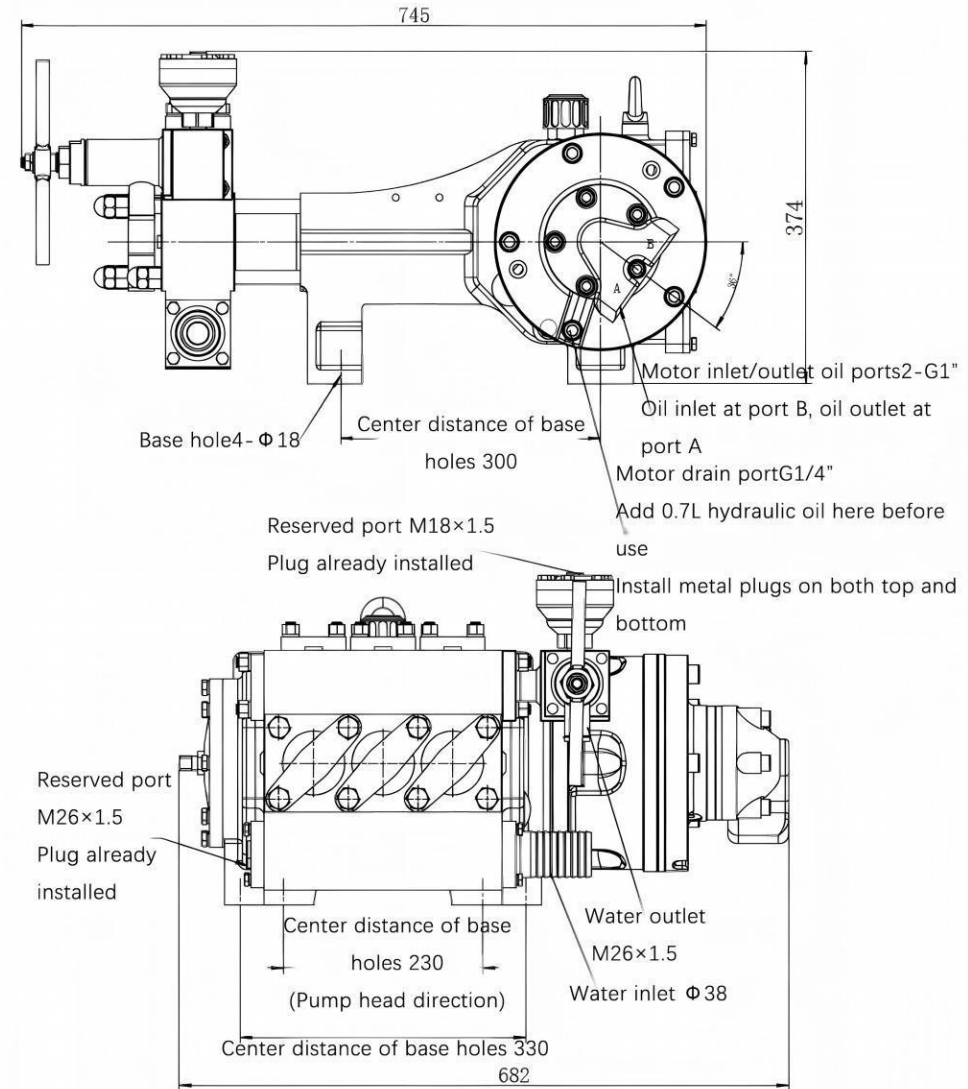


The BW-105Q reciprocating pump is a horizontal triplex single-acting piston pump driven by a hydraulic motor. It is primarily designed for use with 12-ton trenchless drilling rigs but can also be employed for grouting, mine drainage, long-distance water delivery, geological exploration, and other applications. Featuring stepless speed regulation via the hydraulic motor, this pump adapts to drilling and pullback operations with varying borehole diameters. Its design incorporates innovative concepts, utilizing new structures, materials, and manufacturing techniques. The pump boasts a compact structure, lightweight construction, small footprint, and aesthetically pleasing appearance. Key components such as the pump body, crankshaft, connecting rod, crosshead, pump head, and related parts are highly standardized and interchangeable, ensuring easy installation and maintenance. Additionally, it offers extended service life for wear-prone components and high operational reliability.

Horizontal triplex reciprocating single acting piston pump	
Stroke(mm)	60
Cylinder diameter(mm)	50
Pump speed(r/min)	300
Flow(L/min)	105
Pressure(Mpa)	10
Input power(Kw)	20.2
Dimensions(mm)	745 × 682 × 377
Weight(kg)	175
Motor model	1-250
Hydraulic motor pressure(Mpa)	20
Maximum motor flow(L/min)	80

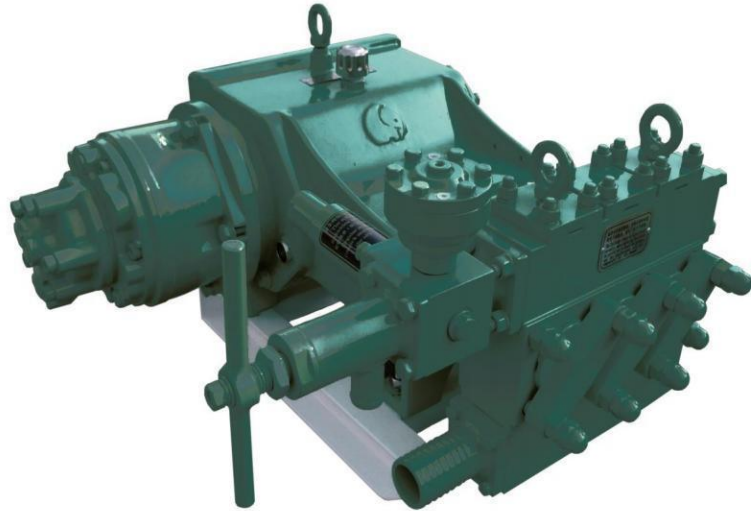
The product specifications and images provided may change due to design improvements and upgrades. Please feel free to inquire for more information.

BW-105Q Outline Dimension Drawing





BW-150Q (Hydraulic Motor Driven)



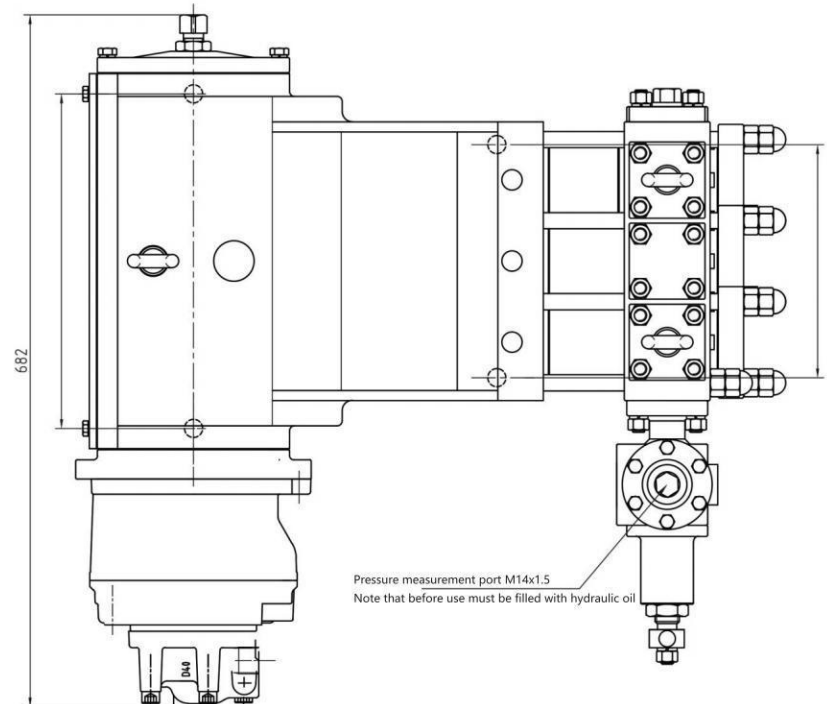
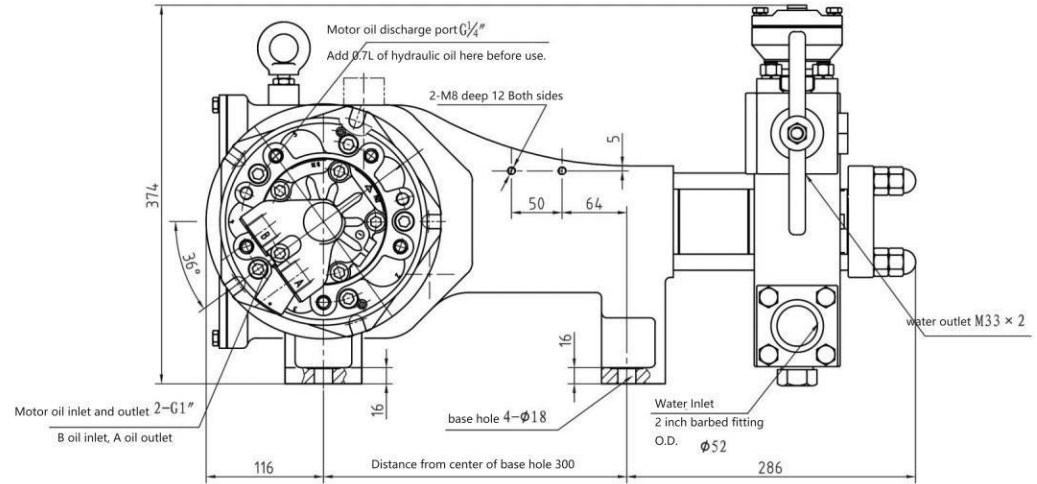
The BW-150Q reciprocating pump is a horizontal triplex reciprocating single-acting piston pump driven by a hydraulic motor. It is mainly used with non-excavation drilling rigs of around 12 tons, and can also be used for other purposes such as injection, mine drainage, long-distance water transfer, and geological exploration. The pump can be infinitely adjusted with a hydraulic motor to adapt to different drilling diameters and backfilling. The design adopts new concepts, new structures, new materials, and new processes, with compact structure, light weight, small size, and beautiful appearance. The pump body, crankshaft, connecting rod, crosshead, pump head, and related parts are as standardized and universal as possible for easy installation and maintenance. The service life of vulnerable parts is long and the reliability is high.

Horizontal triplex reciprocating single acting piston pump	
Stroke (mm)	60
Cylinder diameter (mm)	60
Flow (L/min)	150
Pressure (MPa)	7
Input speed (r/min)	295
Input power (KW)	21
Dimensions (mm)	702 × 682 × 374
Weight (kg)	200
Hydraulic motor model	1-250
Hydraulic motor pressure (MPa)	20
Maximum motor flow (L/min)	75

The product specifications and images provided may change due to design improvements and upgrades. Please feel free to inquire for more information.



BW-150Q Outline Dimension Drawing



BW-160 (Hydraulic Motor Driven)

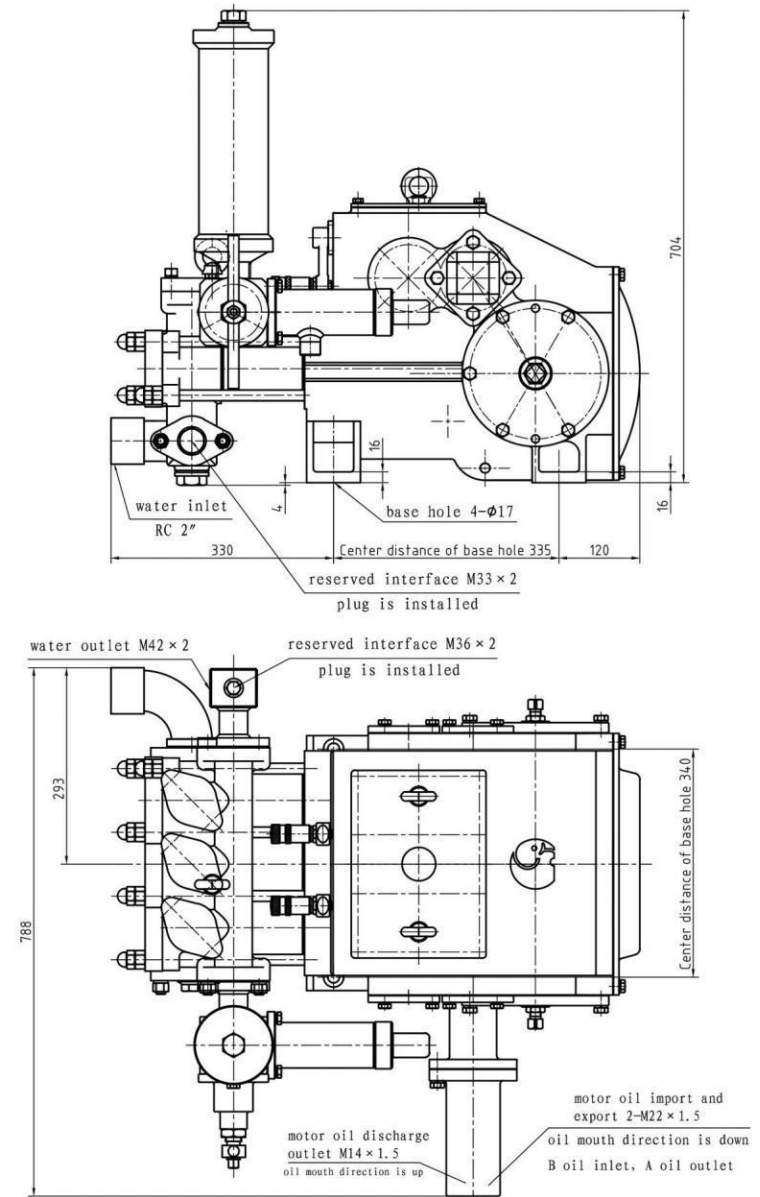


The BW-160 reciprocating pump is a horizontal triplex reciprocating single-acting piston pump that is driven by a hydraulic motor. It is mainly used in conjunction with non-excavation drilling rigs of around 15 tons, but can also be used for other purposes such as grouting, mine wastewater discharge, and long-distance water conveyance. The pump has four flow rates and four pressures, with a wide range of flow and pressure changes that can be applied to different drill hole diameters. In terms of design, new concepts, new structures, new materials, and new processes are used. The pump is compact, lightweight, small in size, and aesthetically pleasing. The pump body, crankshaft, connecting rod, crosshead, pump head, and related parts are designed to be standardized and universal, making installation and maintenance convenient. The service life of vulnerable parts is long, and the reliability is high.

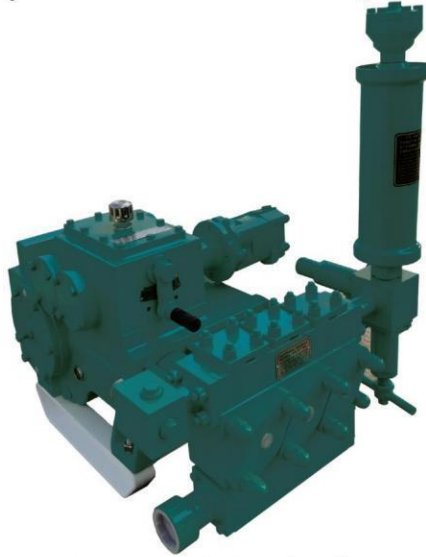
Horizontal triplex reciprocating single acting piston pump				
Stroke (mm)	70			
Cylinder diameter (mm)	70			
Flow (L/min)	160	107	67	44
Pressure (MPa)	2.7	4	6.5	10
Input speed (r/min)	540			
Input power (KW)	9			
Dimensions (mm)	785 × 788 × 708			
Weight (kg)	290			
Hydraulic motor model	2K604-0041			
Hydraulic motor pressure (MPa)	17			
Maximum motor flow (L/min)	48			

The product specifications and images provided may change due to design improvements and upgrades. Please feel free to inquire for more information.

BW-160 Outline Dimension Drawing



BW-180 (Hydraulic Motor Driven)

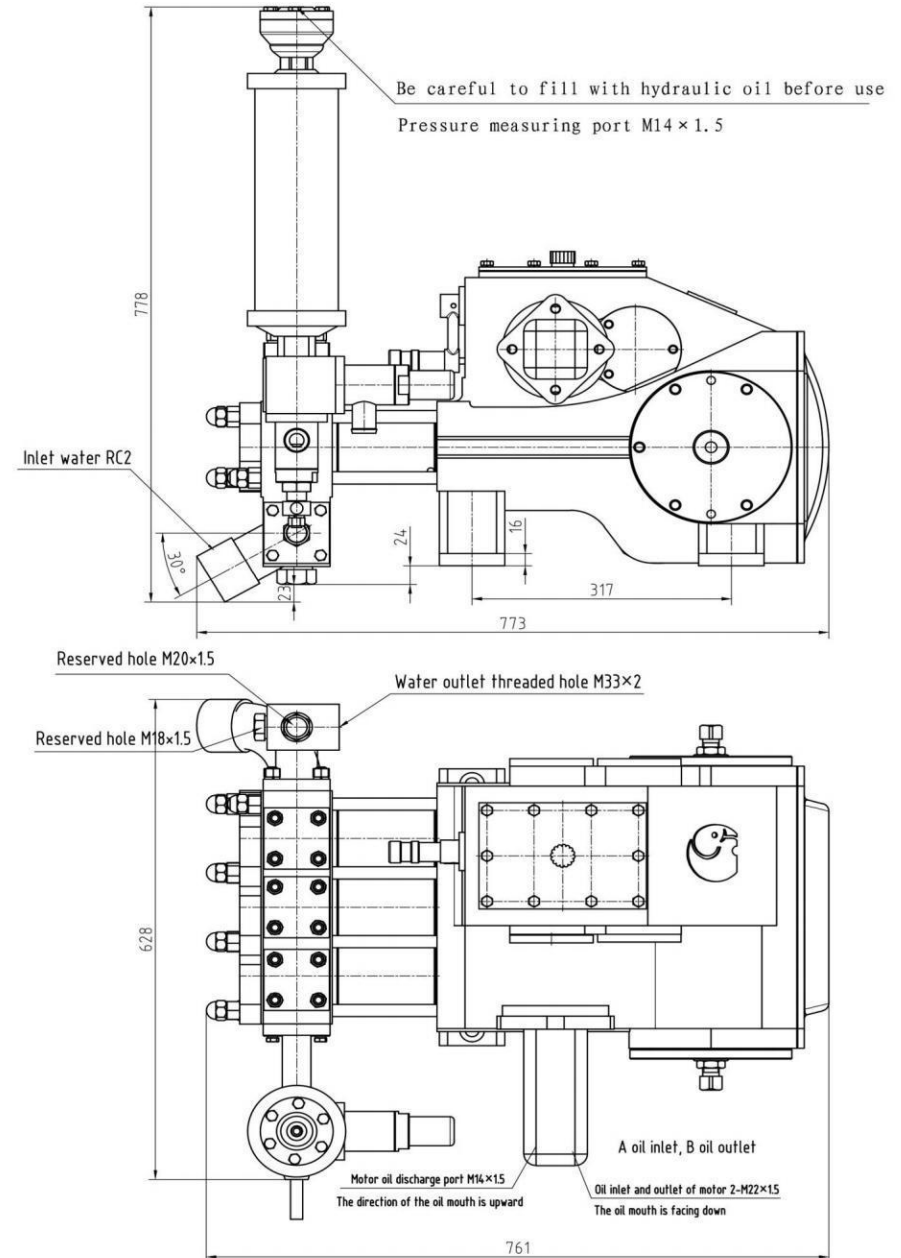


The BW-180 reciprocating pump is a horizontal, triplex, reciprocating, single-acting piston pump that is driven by a hydraulic motor. It is mainly used in conjunction with non-excavation drilling machines weighing around 18 tons, and can also be used for other purposes such as grouting, mine drainage, and long-distance water delivery. The pump has two flow rates and two pressures, with a wide range of flow and pressure changes and can be adapted to different hole diameters for drilling and backwashing. In the design, new concepts, new structures, new materials and new processes are used, which make the pump compact in structure, lightweight, small in size, and aesthetically pleasing. The pump body, crankshaft, connecting rod, crosshead, pump head and related parts are as standardized and universal as possible, making installation and maintenance convenient. The service life of vulnerable parts is long, and the reliability is high.

Horizontal triplex reciprocating single acting piston pump		
Stroke (mm)	60	
Cylinder diameter (mm)	70	
Flow (L/min)	180	71
Pressure (MPa)	3.2	8
Input speed (r/min)	640	
Input power (KW)	12	
Dimensions (mm)	773×680×778	
Weight (kg)	252	
Hydraulic motor model	2K604-0041	
Hydraulic motor pressure (MPa)	17	
Maximum motor flow (L/min)	56	

The product specifications and images provided may change due to design improvements and upgrades. Please feel free to inquire for more information.

BW-180 Outline Dimension Drawing



BWF-250 (Hydraulic Motor Driven)

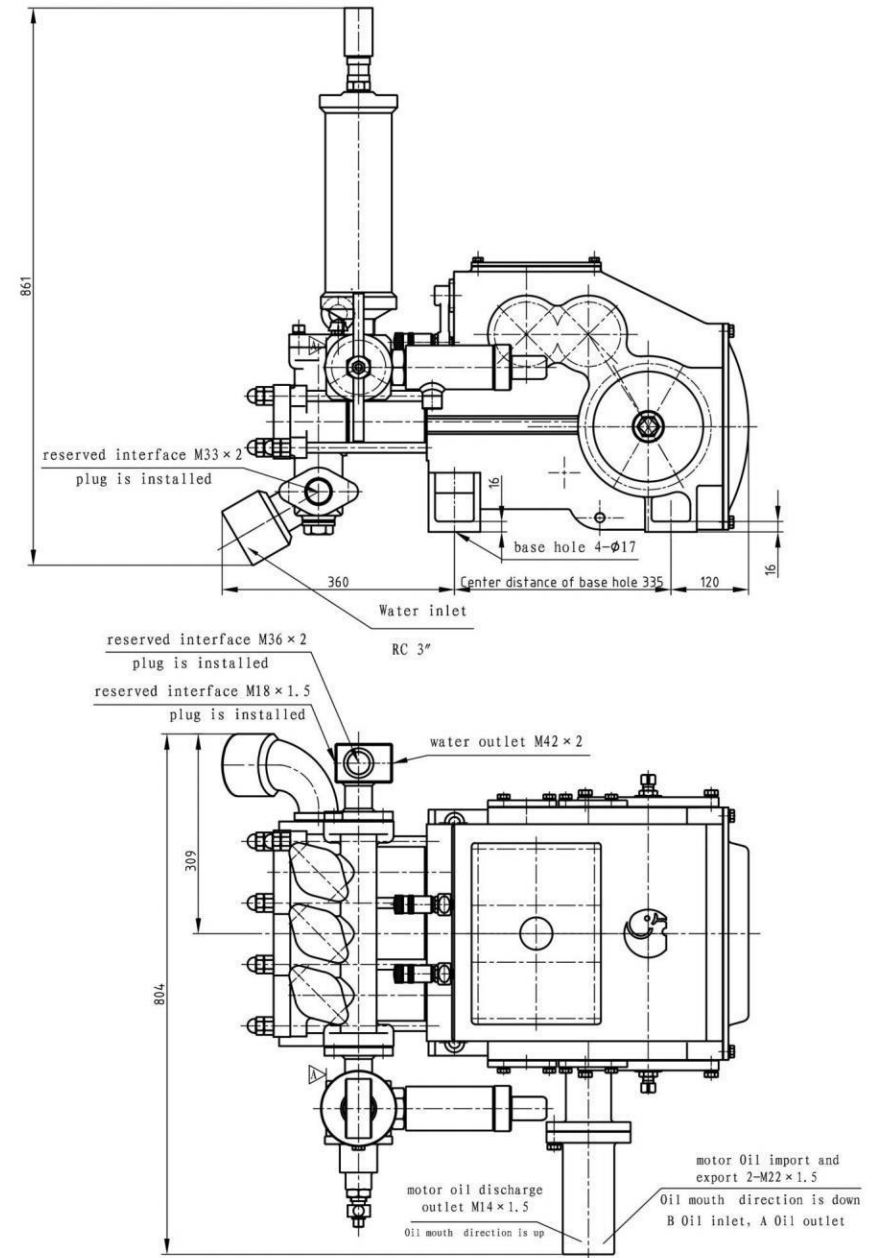


The BWF-250 reciprocating pump is a horizontal triplex reciprocating single-acting piston pump, driven by a hydraulic motor. It is mainly used in conjunction with excavators of about 25 tons for non-excavation drilling, and can also be used for other applications such as grouting, mining drainage, and long-distance water delivery. The pump has four flow rates and four pressures, with a wide range of flow and pressure changes, making it suitable for different diameters of drilling and backfilling. The design adopts new concepts, new structures, new materials, and new processes and is compact, lightweight, small in size, and aesthetically pleasing. The pump body, crankshaft, connecting rod, crosshead, pump head, and related parts are as standardized and universal as possible to facilitate installation and maintenance. The service life of wearing parts is long, and reliability is high.

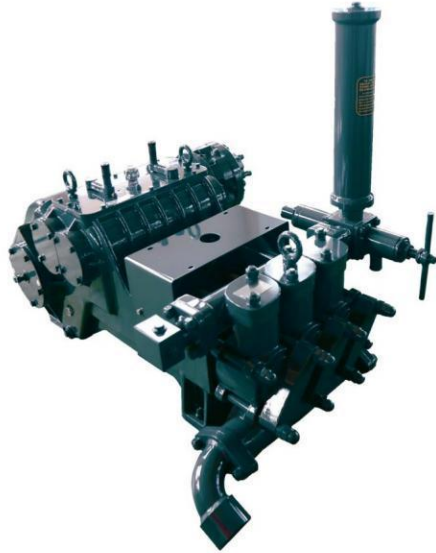
Horizontal triplex reciprocating single acting piston pump				
Stroke (mm)	70			
Cylinder diameter (mm)	75			
Flow (L/min)	250	158	100	69
Pressure (MPa)	2.5	4	6	9
Input speed (r/min)	727			
Input power (KW)	14			
Dimensions (mm)	815×804×890			
Weight (kg)	290			
Hydraulic motor model	2K604-0041			
Hydraulic motor pressure (MPa)	17			
Maximum motor flow (L/min)	64			

The product specifications and images provided may change due to design improvements and upgrades. Please feel free to inquire for more information.

BWF-250 Outline Dimension Drawing



BW-320 (Hydraulic Motor Driven)

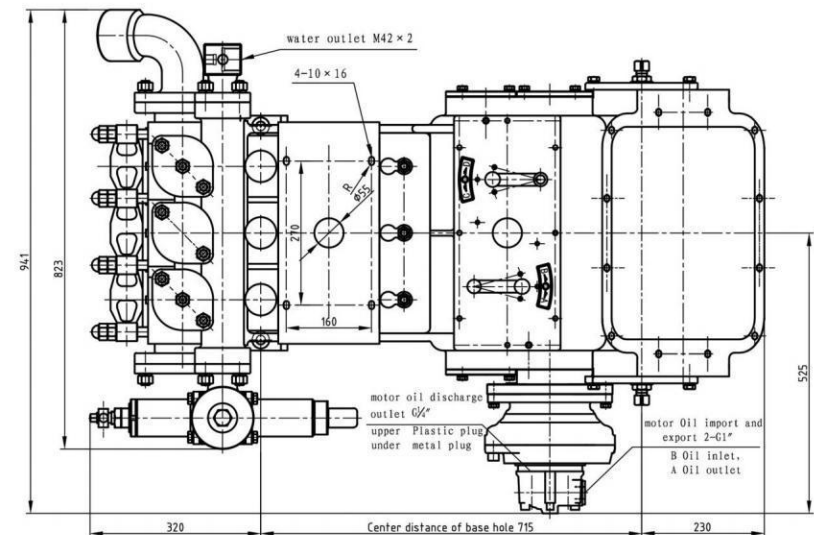
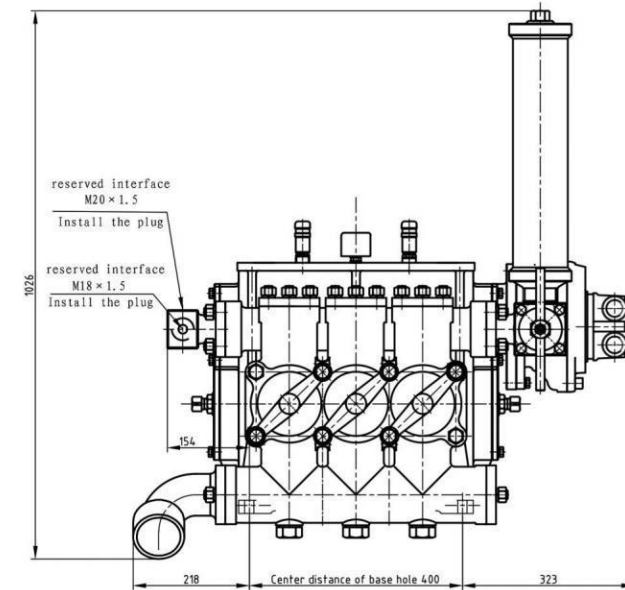


The BW-320 reciprocating pump is a horizontal triplex reciprocating single-acting plunger pump, driven by a hydraulic motor. It is mainly used in conjunction with non-excavation drill rigs of around 35 tons, as well as for other purposes such as grouting, mine drainage, and long-distance water transport. This pump has four types of flow rates and four types of pressures, with a wide range of flow rate and pressure changes, making it suitable for different borehole diameters for drilling and backfilling. The design adopts new concepts, new structures, new materials, and new processes. The structure is compact, lightweight, small in size, and aesthetically pleasing. The pump body, crankshaft, connecting rod, crosshead, pump head, and related components are standardized and universalized as much as possible for easy installation and maintenance. The service life of vulnerable parts is long, with high reliability.

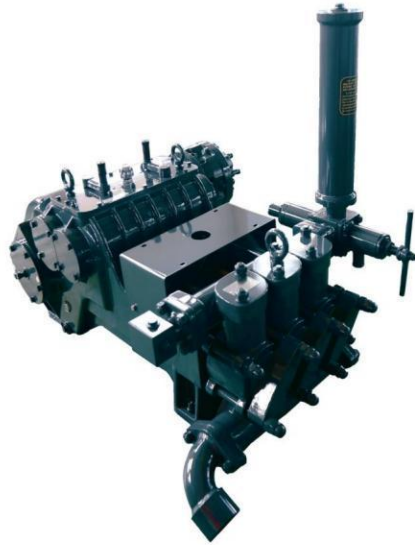
Horizontal triplex reciprocating single acting piston pump				
Stroke (mm)	110			
Cylinder diameter (mm)	80			
Flow (L/min)	320	230	165	118
Pressure (MPa)	4	5	6	8
Input speed (r/min)	535			
Input power (KW)	30			
Dimensions (mm)	1265 × 941 × 1026			
Weight (kg)	640			
Hydraulic motor model	1-175			
Hydraulic motor pressure (MPa)	20			
Maximum motor flow (L/min)	102			

The product specifications and images provided may change due to design improvements and upgrades. Please feel free to inquire for more information.

BW-320 Outline Dimension Drawing



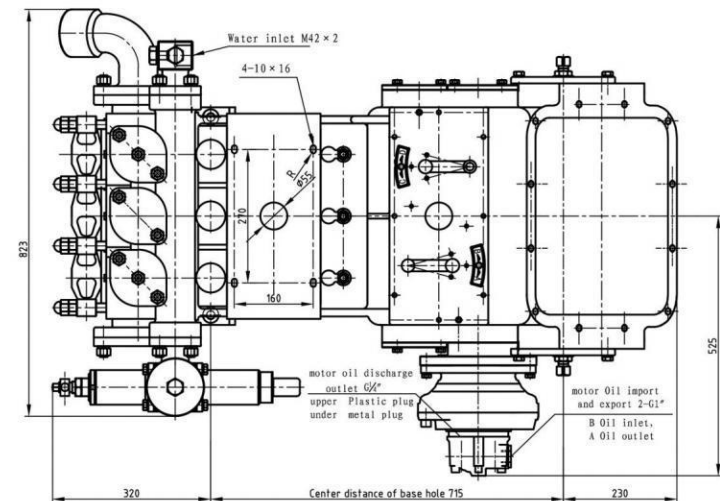
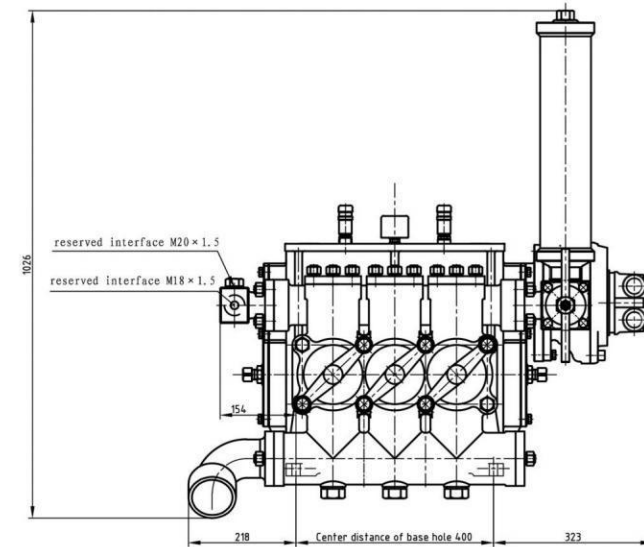
BW-400 (Hydraulic Motor Driven)



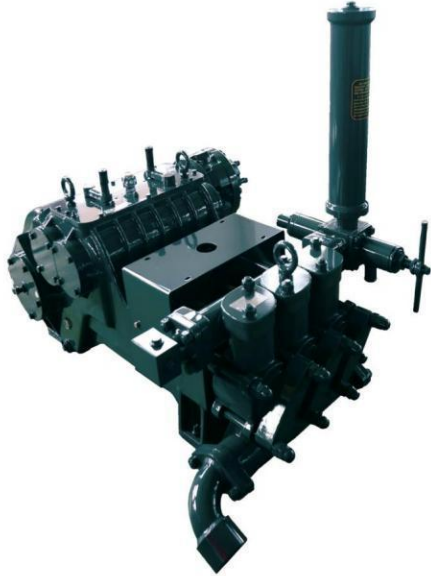
The BW-400 reciprocating pump is a horizontal triplex reciprocating single-acting plunger pump that is driven by a hydraulic motor. It is mainly used in conjunction with non-excavation drilling rigs of around 40 tons, and can also be used for grouting, mine drainage and long-distance water delivery in other applications. The pump has four flow rates and four pressures, with a wide range of changes in flow rate and pressure to suit different borehole sizes and backflushing. The design incorporates new concepts and utilizes new structures, materials, and processes. It is compact in structure, light in weight, small in size, and aesthetically pleasing. The pump body, crankshaft, connecting rod, crosshead, pump head, and related components are designed to be as standardized and interchangeable as possible, making installation and maintenance easy. The service life of vulnerable parts is long and its reliability is high.

Horizontal triplex reciprocating single acting piston pump	
Stroke (mm)	110
Cylinder diameter (mm)	85
Flow (L/min)	400 290 200 150
Pressure (MPa)	3 4.5 6 10
Input speed (r/min)	538
Input power (KW)	35
Dimensions (mm)	1265 × 941 × 1026
Weight (kg)	650
Hydraulic motor model	1-175
Hydraulic motor pressure (MPa)	20
Maximum motor flow (L/min)	105

BW-400 Outline Dimension Drawing



BWF-400 (Hydraulic Motor Driven)

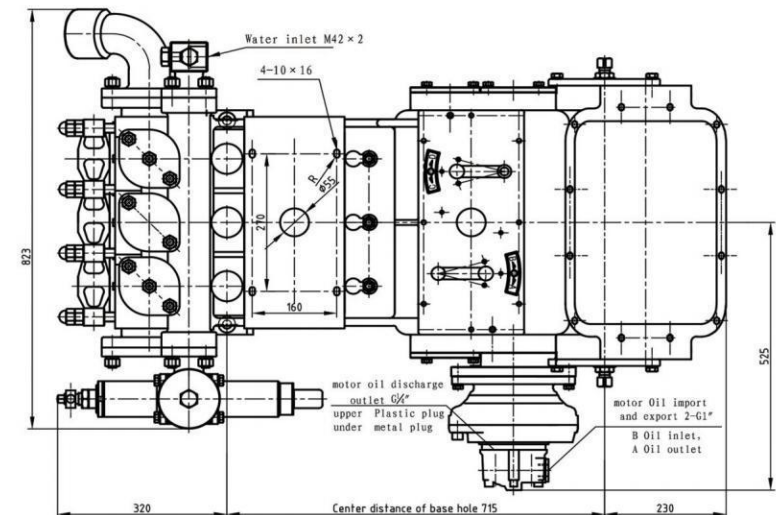
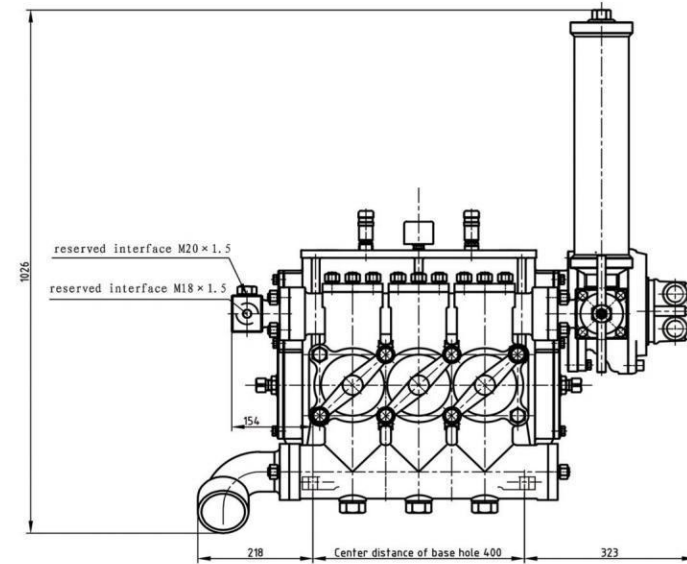


The BWF-400 reciprocating pump is a horizontal triplex reciprocating single-acting plunger pump driven by a hydraulic motor. It is mainly used in conjunction with non-excavation drilling rigs of around 40 tons, and can also be used for other purposes such as grouting, mine drainage, and long-distance water delivery. The pump has four flow rates and four pressures, with a large range of flow rate and pressure changes, making it suitable for different drill hole diameters and backflushing. The design adopts new concepts, new structures, new materials, and new processes, with a compact structure, light weight, small size, and beautiful appearance. The pump body, crankshaft, connecting rod, crosshead, pump head, and related components are as standardized and universalized as possible for convenient installation and maintenance. The service life of vulnerable parts is long, and the reliability is high.

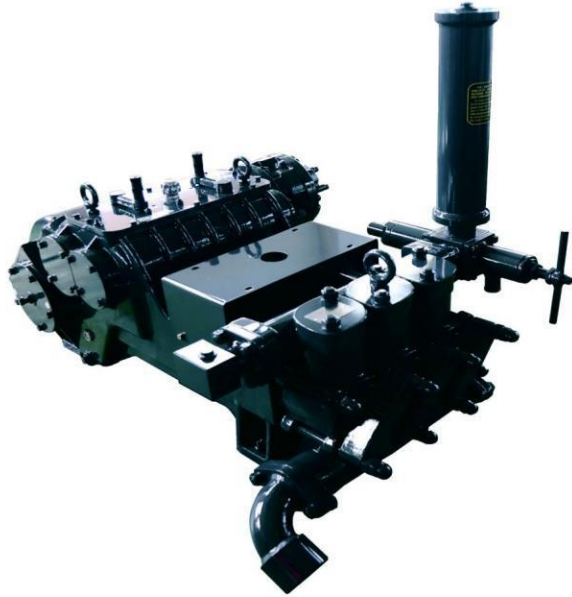
Horizontal triplex reciprocating single acting piston pump				
Stroke (mm)	110			
Cylinder diameter (mm)	85			
Flow (L/min)	400	242	154	93
Pressure (MPa)	2.3	3.8	6	10
Input speed (r/min)	515			
Input power (KW)	30			
Dimensions (mm)	1265×941×1026			
Weight (kg)	650			
Hydraulic motor model	1-150			
Hydraulic motor pressure (MPa)	20			
Maximum motor flow (L/min)	95			

The product specifications and images provided may change due to design improvements and upgrades. Please feel free to inquire for more information.

BWF-400 Outline Dimension Drawing



BW-450 (Hydraulic Motor Driven)

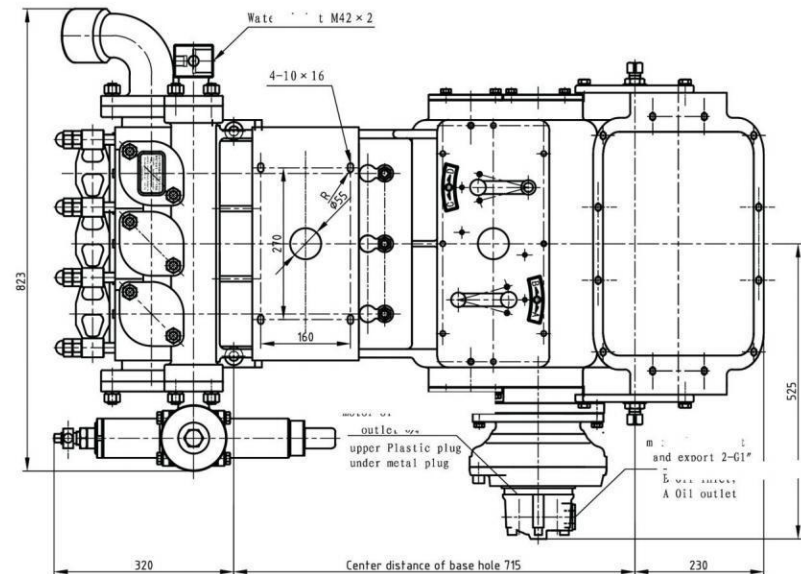
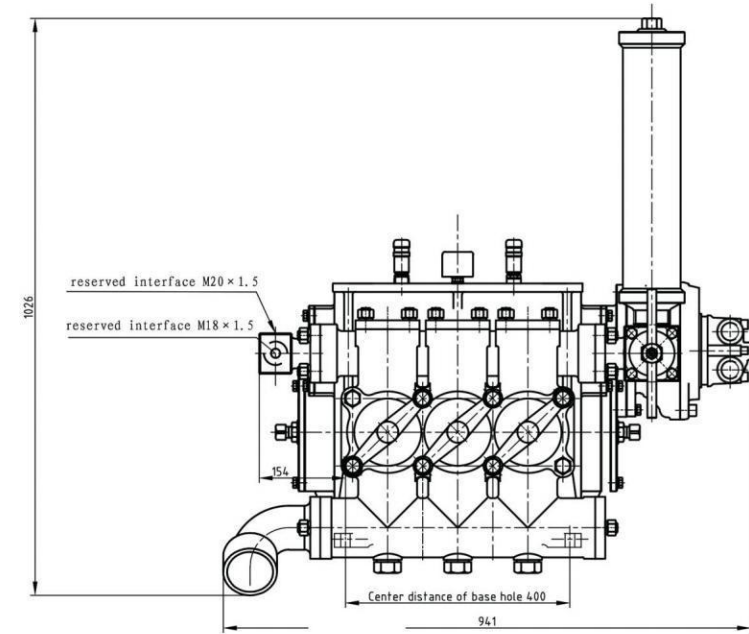


The BW-450 mud pump is a horizontal triplex reciprocating single-acting piston pump, driven by a hydraulic motor. It is mainly used with non-excavation drilling rigs of around 45 tons, but can also be used for grouting, mine drainage, and long-distance water transport. The pump has four flow rates and four pressures, with a wide range of variations to suit different hole diameters for drilling and backpulling. The design incorporates new concepts, materials, and processes, with a compact structure, lightweight, small size, and attractive appearance. The pump body, crankshaft, connecting rod, crosshead, pump head, and related parts are standardized and universal, making installation and maintenance convenient. The vulnerable parts have a long service life and high reliability.

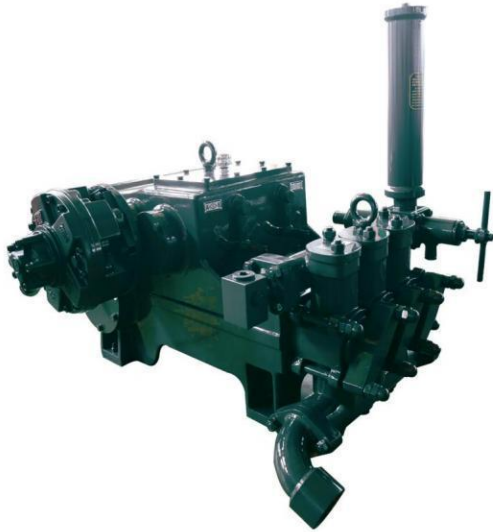
Horizontal triplex reciprocating single acting piston pump				
Stroke (mm)	110			
Cylinder diameter (mm)	95			
Flow (L/min)	450	320	230	165
Pressure (MPa)	3.5	4.5	6	8
Input speed (r/min)	508			
Input power (KW)	36			
Dimensions (mm)	1265×879×1026			
Weight (kg)	640			
Hydraulic motor model	1-200			
Hydraulic motor pressure (MPa)	20			
Maximum motor flow (L/min)	112			

The product specifications and images provided may change due to design improvements and upgrades. Please feel free to inquire for more information.

BW-450 Outline Dimension Drawing



BW-600 (Hydraulic Motor Driven)

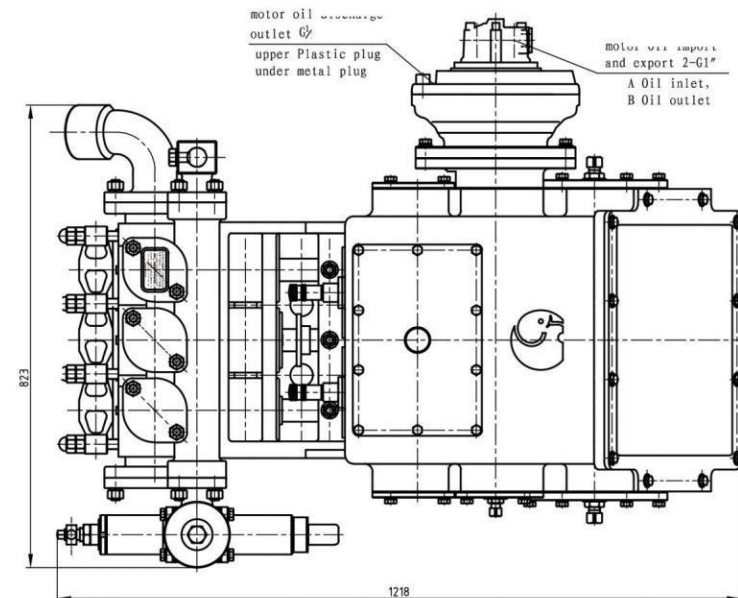
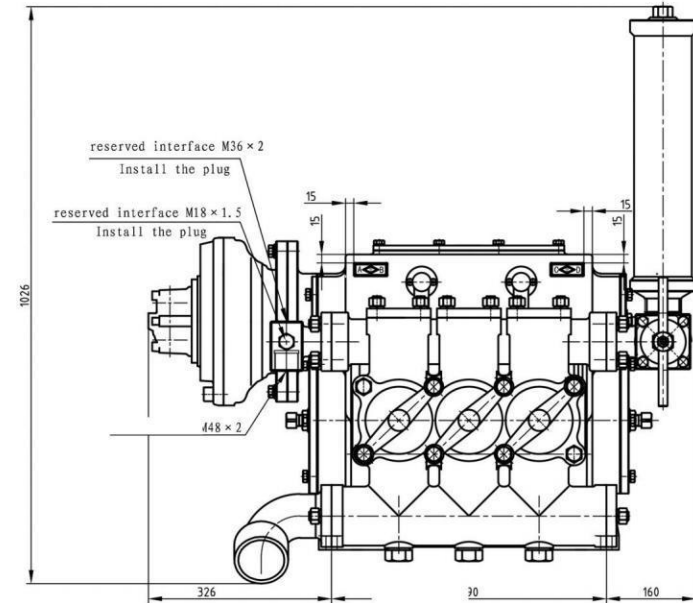


The BW-600 reciprocating pump is a horizontal triplex reciprocating single-acting piston pump, which is driven by a hydraulic motor. It is mainly used in conjunction with non-excavation drilling rigs of about 70 tons, and can also be used for other purposes such as grouting, mine drainage, and long-distance water delivery. The pump has four different flow rates and four different pressures, with a wide range of flow and pressure changes, suitable for different borehole drilling and backfilling. The design incorporates new concepts, new structures, new materials, and new processes, with a compact structure, light weight, small size, and attractive appearance. It is easy to install and maintain, and features high output pressure, long service life of vulnerable parts, and stable performance.

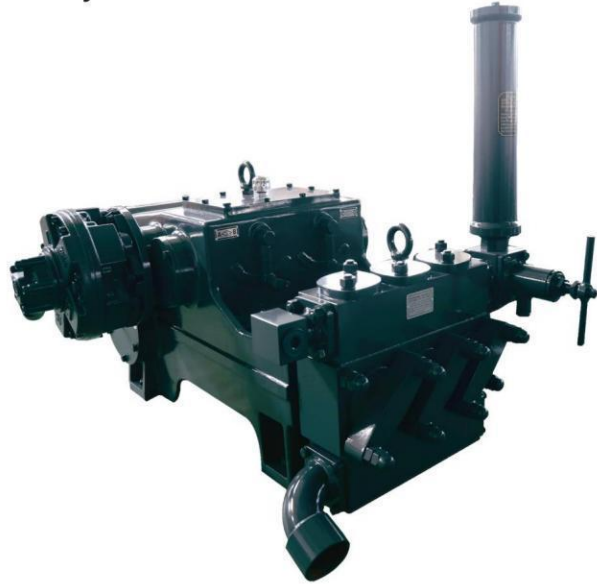
Horizontal triplex reciprocating single acting piston pump				
Stroke (mm)	110			
Cylinder diameter (mm)	100			
Flow (L/min)	600	415	280	195
Pressure (MPa)	3.5	5	7.5	10
Input speed (r/min)	550			
Input power (KW)	47			
Dimensions (mm)	1222 × 823 × 1026			
Weight (kg)	760			
Hydraulic motor model	2-250			
Hydraulic motor pressure (MPa)	20			
Maximum motor flow (L/min)	152			

The product specifications and images provided may change due to design improvements and upgrades. Please feel free to inquire for more information.

BW-600 Outline Dimension Drawing



BW-800 (Hydraulic Motor Driven)

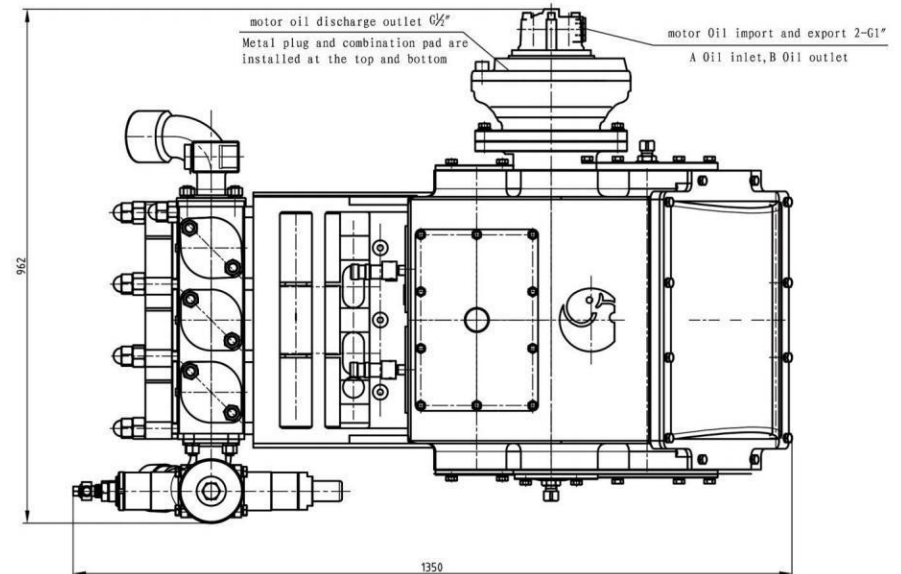
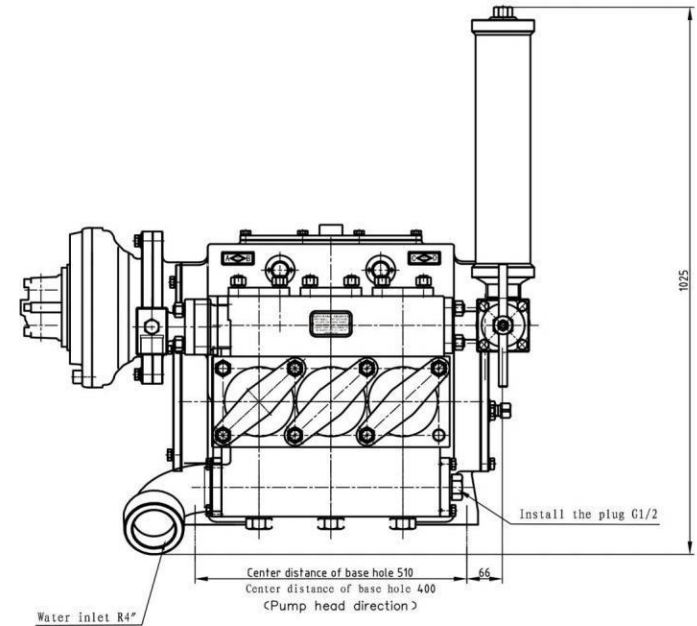


The BW-800 reciprocating pump is a horizontal triplex reciprocating single-acting piston pump, driven by a hydraulic motor. It is mainly used in conjunction with non-excavating drilling machines weighing around 90 tons, and can also be used for other purposes such as grouting, mine drainage, and long-distance water delivery. The pump has four flow rates and four pressure levels, with a large range of flow and pressure changes, making it suitable for different aperture drilling and backstroke. In terms of design, new concepts, new structures, new materials, and new processes are adopted; the structure is compact, light in weight, small in size, and aesthetically pleasing; installation and maintenance are convenient; and it has the characteristics of high output pressure, long service life of vulnerable parts, and stable performance.

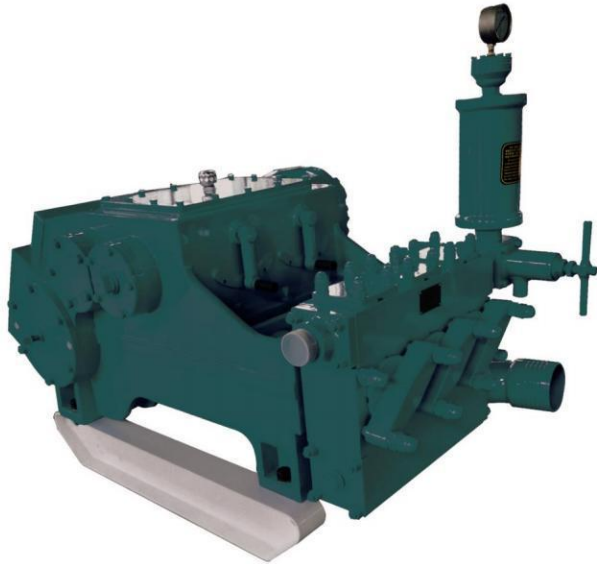
Horizontal triplex reciprocating single acting piston pump				
Stroke (mm)	135			
Cylinder diameter (mm)	110			
Flow (L/min)	800	550	370	260
Pressure (MPa)	3.5	5	7.5	10
Input speed (r/min)	503			
Input power (KW)	54			
Dimensions (mm)	1339×948×1019			
Weight (kg)	950			
Hydraulic motor model	2-350			
Hydraulic motor pressure (MPa)	20			
Maximum motor flow (L/min)	195			

The product specifications and images provided may change due to design improvements and upgrades. Please feel free to inquire for more information.

BW-800 Outline Dimension Drawing



BW-1000 (Hydraulic Motor Driven)

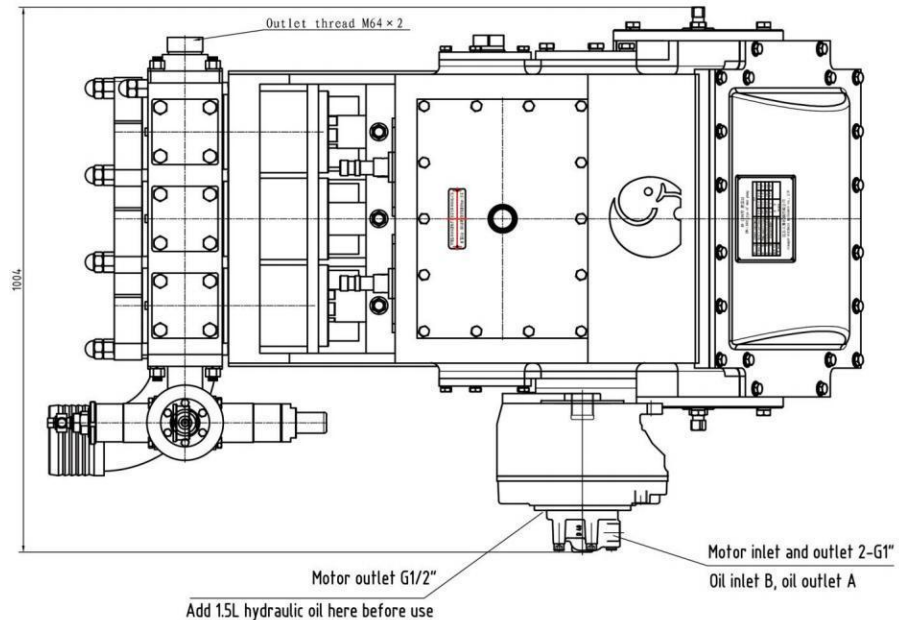
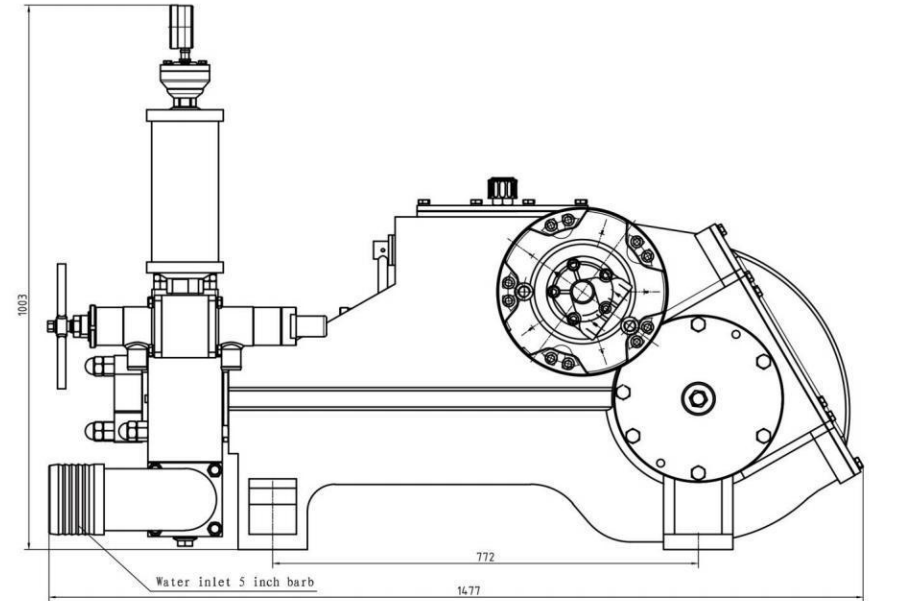


The BW-1000 reciprocating pump is a horizontal, triplex, single-acting piston pump that is hydraulically driven. It is mainly used in conjunction with non-excavation drilling machines weighing around 100 tons, but can also be used for grouting, mine drainage, and long-distance water transportation, among other purposes. The pump has four flow rates and four pressures, with a large range of flow rate and pressure variations to accommodate different borehole drilling and backflow requirements. The design incorporates new concepts, structures, materials, and technologies, with a compact structure, light weight, small size, and attractive appearance. It is easy to install and maintain, and features high output pressure, longer life expectancy of vulnerable parts, and stable performance.

Horizontal triplex reciprocating single acting piston pump				
Stroke (mm)	140			
Cylinder diameter (mm)	115			
Flow (L/min)	1000	650	515	335
Pressure (MPa)	4	6	7.5	10
Input speed (r/min)	475			
Input power (KW)	80			
Dimensions (mm)	1477×1004×1003			
Weight (kg)	1300			
Hydraulic motor model	2-420			
Hydraulic motor pressure (MPa)	25			
Maximum motor flow (L/min)	222			

The product specifications and images provided may change due to design improvements and upgrades. Please feel free to inquire for more information.

BW-1000 Outline Dimension Drawing



YBW-1200 (Hydraulic Motor Driven)

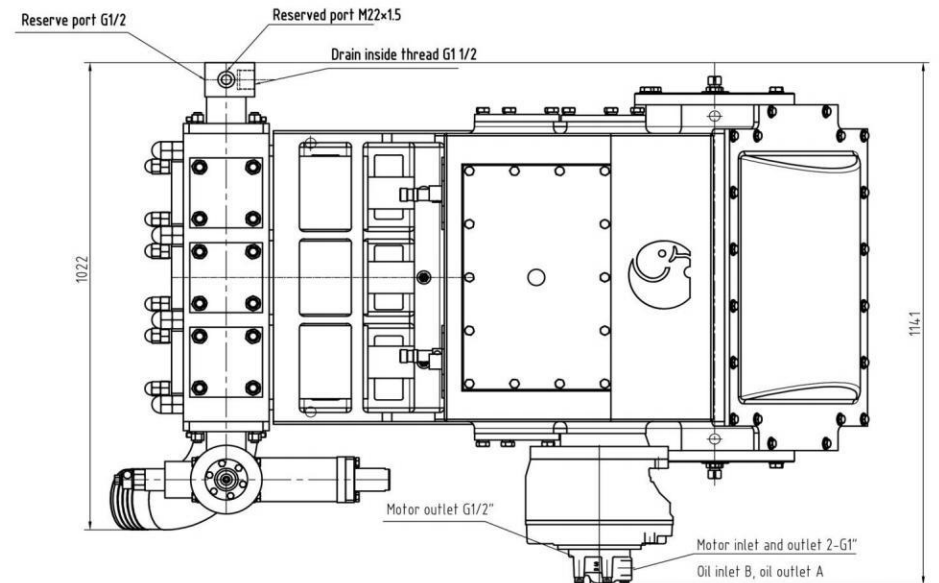
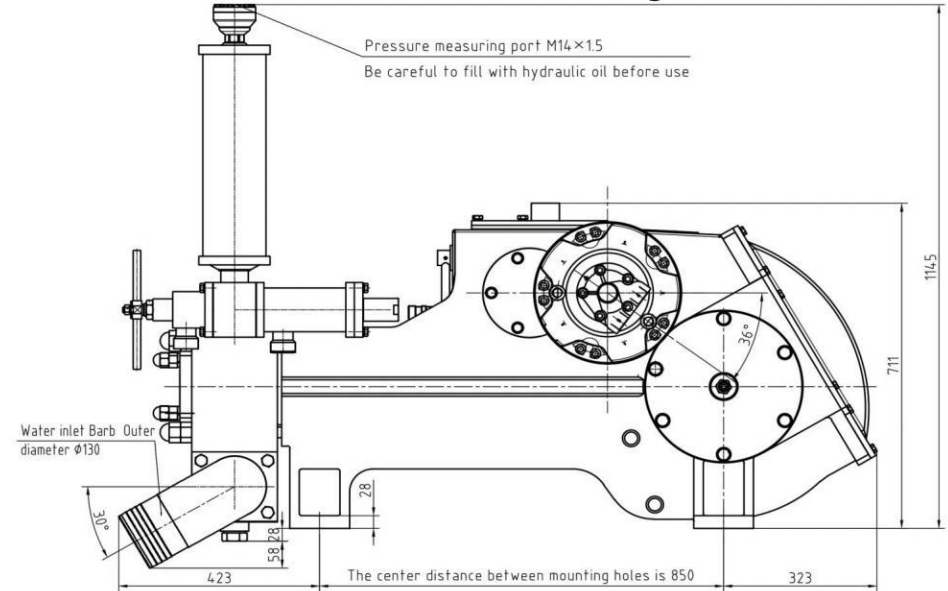


The YBW-1200 reciprocating pump is a horizontal triplex reciprocating single-acting piston pump driven by a hydraulic motor. It is mainly used in conjunction with non-excavation drilling machines of about 150 tons, and can also be used for other purposes such as grouting, mine drainage, and long-distance water delivery. The pump has four flow rates and four pressures, and its flow and pressure range can be adjusted to suit different diameters of drilling and backflow. In terms of design, new concepts, structures, materials, and processes are adopted. The pump has a compact structure, light weight, small size, and beautiful appearance. It is easy to install and maintain, and has the characteristics of high output pressure, long service life of vulnerable parts, and stable performance.

Horizontal triplex reciprocating single acting piston pump				
Stroke (mm)	150			
Cylinder diameter (mm)	125			
Flow (L/min)	1200	779	600	385
Pressure (MPa)	4	6	8	12
Input speed (r/min)	480			
Input power (KW)	100			
Dimensions (mm)	1596×1170×1242			
Weight (kg)	1700			
Hydraulic motor model	2-500			
Hydraulic motor pressure (MPa)	25			
Maximum motor flow (L/min)	260			

The product specifications and images provided may change due to design improvements and upgrades. Please feel free to inquire for more information.

YBW-1200 Outline Dimension Drawing



DXBH-200

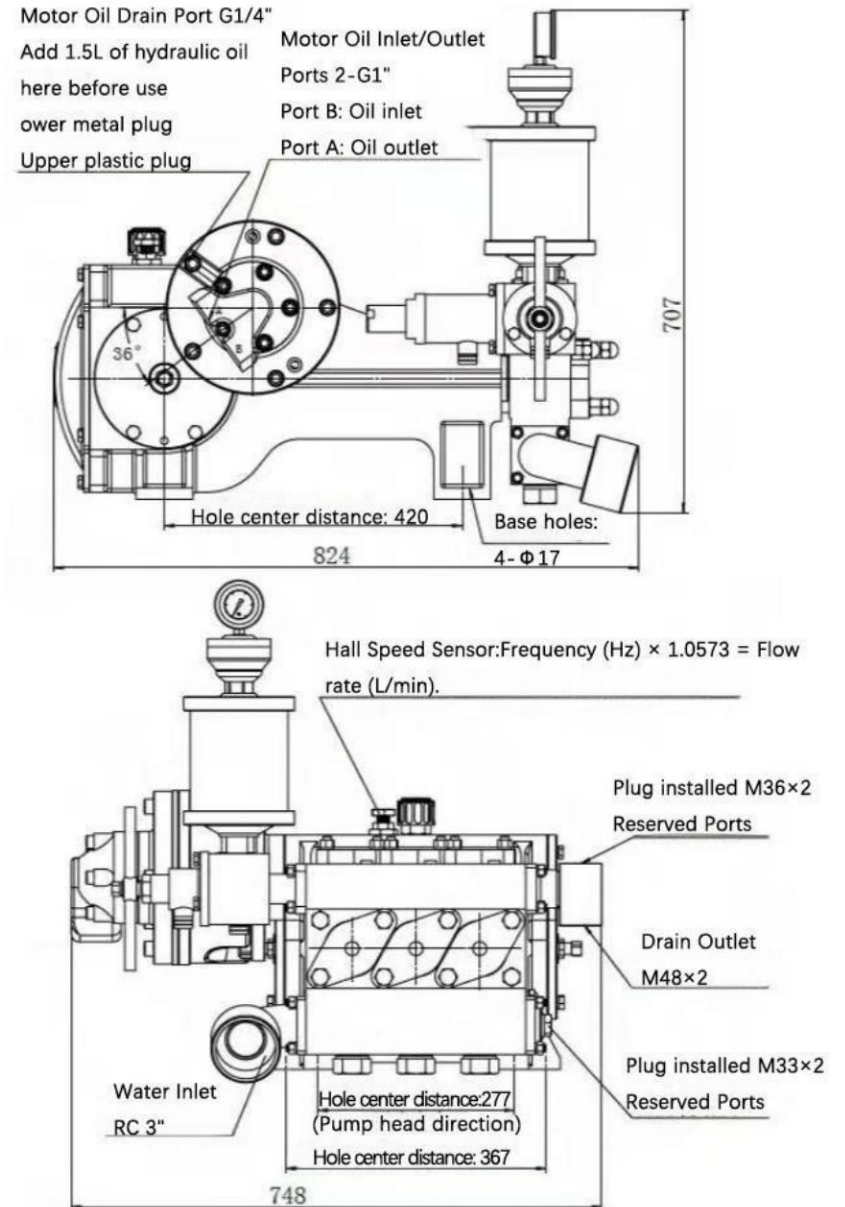


The DXBH-200 reciprocating pump is a horizontal triplex single-acting piston pump driven by a hydraulic motor. It is primarily designed for use with 20-ton trenchless drilling rigs but can also be employed in other applications such as grouting, mine drainage, long-distance water delivery, geological exploration, and more. Featuring stepless speed regulation via a hydraulic motor, this pump adapts to drilling and pullback operations of varying borehole diameters. Its design incorporates innovative concepts, advanced structures, new materials, and modern manufacturing techniques, resulting in a compact, lightweight, and aesthetically pleasing unit. Key components—including the pump body, crankshaft, connecting rod, crosshead, pump head, and related parts—are highly standardized and modularized for easy installation and maintenance. The pump boasts extended service life for wear-prone components and high operational reliability.

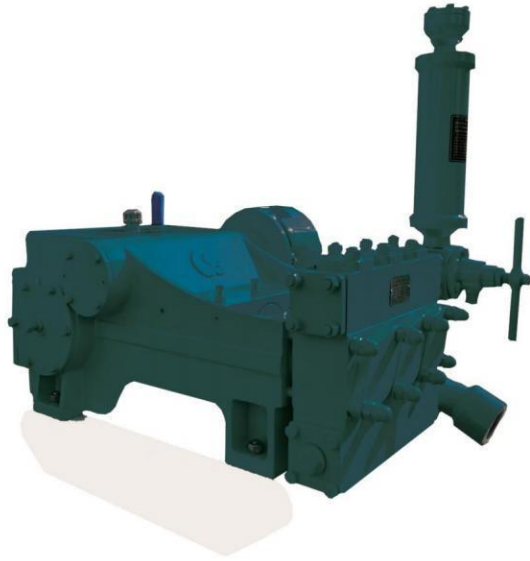
Horizontal triplex reciprocating single acting piston pump	
Stroke(mm)	60
Cylinder diameter(mm)	70
Pump speed(r/min)	145~290
Flow(L/min)	100~200
Pressure(Mpa)	8~4
Input power(Kw)	15.4
Dimensions(mm)	824 × 748 × 707
Weight(kg)	275
Motor model	BD1-175~90 3H
Hydraulic motor pressure(Mpa)	20
Maximum motor flow(L/min)	90

The product specifications and images provided may change due to design improvements and upgrades. Please feel free to inquire for more information.

DXBH-200 Outline Dimension Drawing



DXBH-300 (Hydraulic Motor Driven)

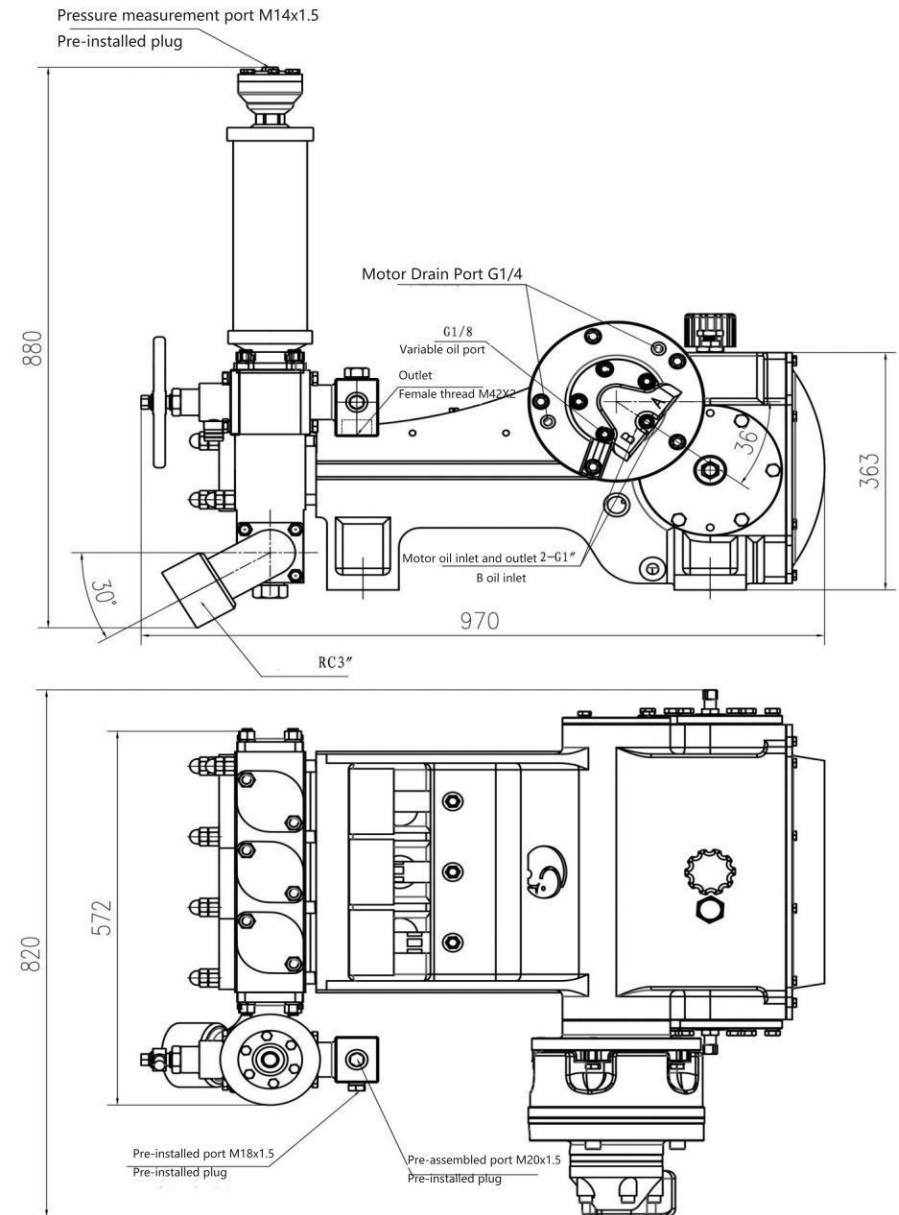


The DXBH-300 reciprocating pump is a horizontal triplex reciprocating single-acting piston pump, which is driven by a double displacement hydraulic motor. It is mainly used in conjunction with non-excavation drilling machines of about 25 tons, and can also be used for other purposes such as grouting, mine drainage, and long-distance water delivery. The pump has two flow rates and two pressures, and the shift operation is achieved by remote adjustment of the hydraulic motor flow rate, which changes the traditional manual shift operation mode. The pump adopts new concepts and new structures; it is compact in structure, beautiful in appearance, easy to install and maintain, with a longer life span for vulnerable parts and stable performance.

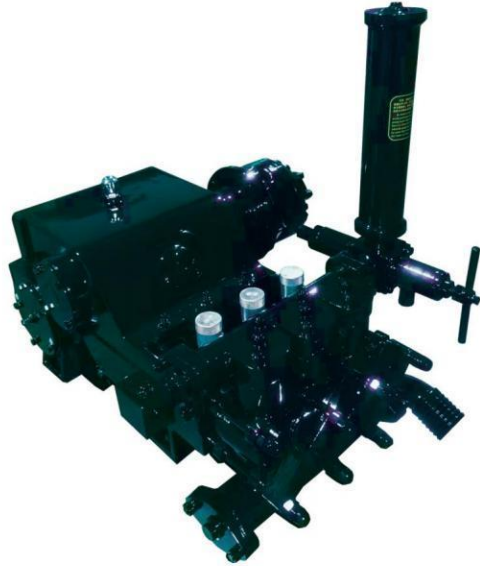
Horizontal triplex reciprocating single acting piston pump	
Stroke (mm)	75
Cylinder diameter (mm)	80
Flow (L/min)	300 ~ 150
Pressure (MPa)	4 ~ 8
Input speed (r/min)	895 ~ 448
Input power (KW)	24
Dimensions (mm)	970 × 820 × 880
Weight (kg)	380
Hydraulic motor model	BD1 175~90
Hydraulic motor pressure (MPa)	21
Maximum motor flow (L/min)	88

The product specifications and images provided may change due to design improvements and upgrades. Please feel free to inquire for more information.

DXBH-300 Outline Dimension Drawing



DXB-300/8 (Hydraulic Motor Driven)

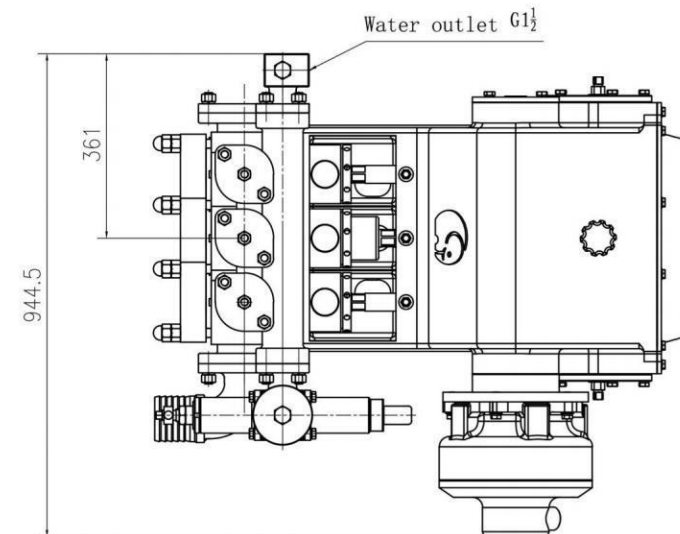
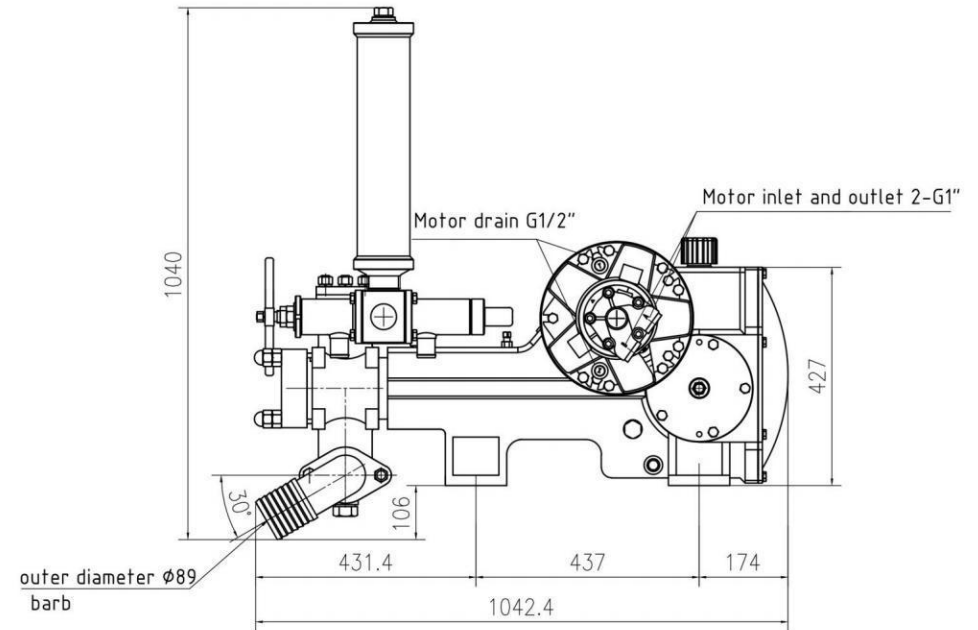


The DXB-300/8 reciprocating pump is a horizontal triplex reciprocating single-acting plunger pump, driven by a hydraulic motor. It is mainly used for tunnel drilling rigs, trenchless drilling rigs, and can also be used for other purposes, such as grouting, mine drainage, and long-distance water delivery. The pump can adjust the flow rate by remotely adjusting the hydraulic motor flow, and can also be equipped with a variable motor, changing the traditional manual shift operation mode. The pump adopts a new concept and structure, with a compact structure, beautiful appearance, easy installation and maintenance, long service life of vulnerable parts, and stable performance.

Horizontal triplex reciprocating single acting piston pump		
Stroke (mm)		80
Cylinder diameter (mm)		85
Flow (L/min)		300
Pressure (MPa)		8
Input speed (r/min)		460
Input power (KW)		48
Dimensions (mm)		1045×945×1040
Weight (kg)		585
Hydraulic motor model		2-350
Hydraulic motor pressure (MPa)		21
Maximum motor flow (L/min)		177

The product specifications and images provided may change due to design improvements and upgrades. Please feel free to inquire for more information.

DXB-300/8 Outline Dimension Drawing



DXB-330/10 (Hydraulic Motor Driven)

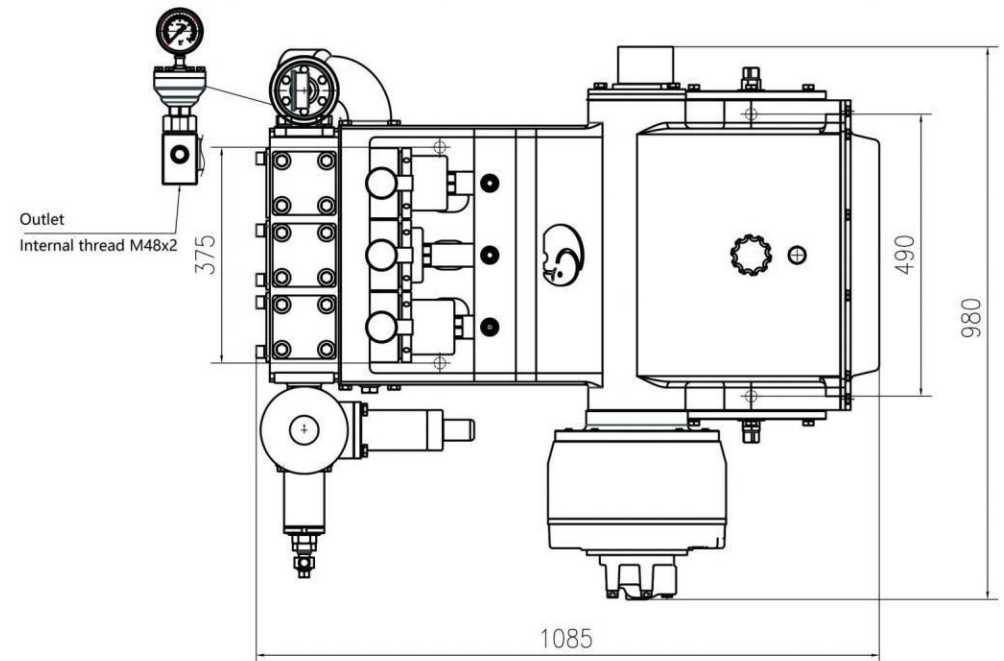
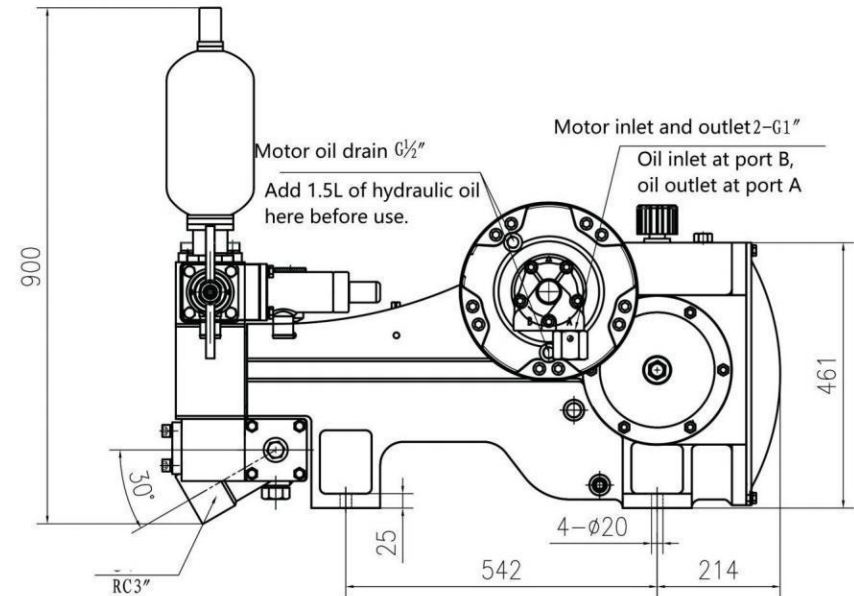


The DXB-330/10 reciprocating pump is a horizontal triplex reciprocating single-acting plunger pump driven by a hydraulic motor. It is mainly used for tunneling rig matching, but can also be used for other purposes such as grouting, mine drainage, and long-distance water delivery. This pump can adjust the flow rate remotely by adjusting the flow of the hydraulic motor, which changes the traditional manual shift operation mode. The pump adopts a new concept and a new structure. The one-way valve adopts Vaner (with high volumetric efficiency and low working noise), compact structure, beautiful appearance, easy installation, maintenance and longer life of vulnerable parts, and stable performance.

Horizontal triplex reciprocating single acting piston pump	
Stroke (mm)	110
Cylinder diameter (mm)	80
Flow (L/min)	330
Pressure (MPa)	10
Input speed (r/min)	682
Input power (KW)	65
Dimensions (mm)	1085×980×900
Weight (kg)	750
Hydraulic motor model	XM2-300
Hydraulic motor pressure (MPa)	21.5
Maximum motor flow (L/min)	682

The product specifications and images provided may change due to design improvements and upgrades. Please feel free to inquire for more information.

DXB-330/10 Outline Dimension Drawing



DXBH-400 (Hydraulic Motor Driven)

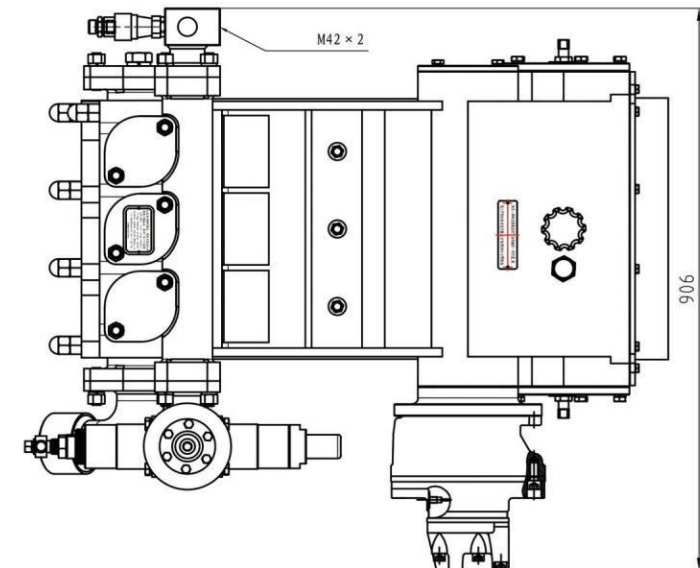
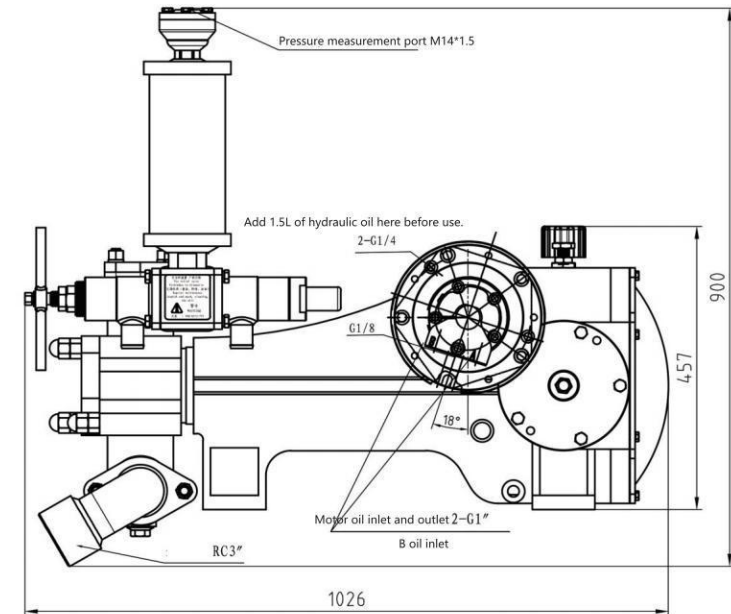


The DXBH-400 reciprocating pump is a horizontal, triplex reciprocating single-acting piston pump, driven by a dual-displacement hydraulic motor. It is mainly used in conjunction with non-excavation drilling machines of about 40 tons, but can also be used for other purposes such as injection grouting, mine drainage, and long-distance water transfer. The pump has two flow rates and two pressures, which can be achieved by remotely adjusting the hydraulic motor flow, thus changing the traditional manual gear-shifting operation mode. The pump adopts a new concept and structure, with a compact structure, beautiful appearance, easy installation and maintenance, long service life of vulnerable parts, and stable performance.

Horizontal triplex reciprocating single acting piston pump	
Stroke (mm)	80
Cylinder diameter (mm)	95
Flow (L/min)	400 ~ 200
Pressure (MPa)	4 ~ 8
Input speed (r/min)	980 ~ 490
Input power (KW)	32
Dimensions (mm)	1026 × 906 × 900
Weight (kg)	500
Hydraulic motor model	BD1-250~125
Hydraulic motor pressure (MPa)	21
Maximum motor flow (L/min)	125

The product specifications and images provided may change due to design improvements and upgrades. Please feel free to inquire for more information.

DXBH-400 Outline Dimension Drawing



DXB-500 (Hydraulic Motor Driven)

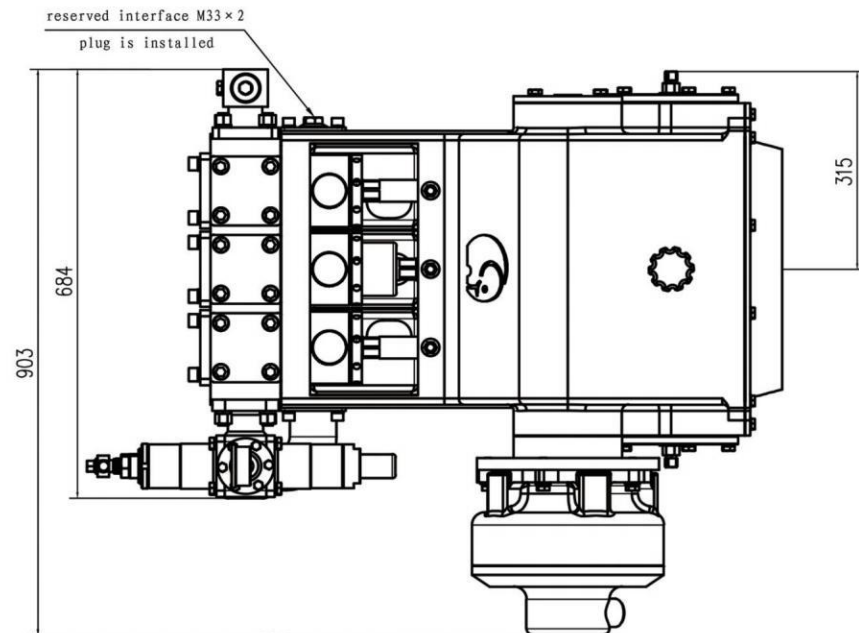
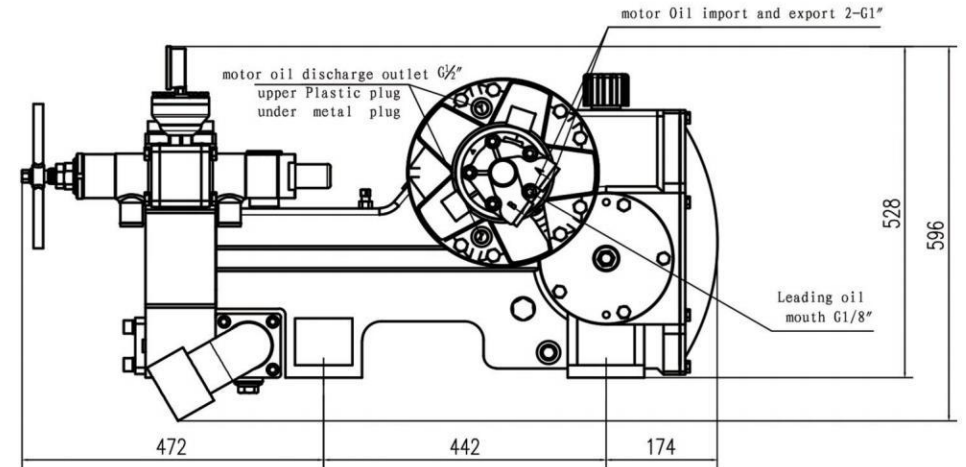


The DXB-500 reciprocating pump is a horizontal triplex reciprocating single-acting plunger pump driven by a dual-displacement hydraulic motor. It is mainly used in conjunction with non-excavation drilling machines of around 50 tons, but can also be used for other purposes such as grouting, mine drainage, and long-distance water delivery. The pump has two flow rates and two pressures, which can be adjusted remotely by adjusting the hydraulic motor flow rate, thereby achieving gear shifting operations, changing the traditional manual gear shifting operation mode. The pump adopts a new concept and new structure, and the one-way valve adopts a Vernal design (with high volumetric efficiency and low working noise). It has a compact structure and attractive appearance, and is easy to install and maintain. The service life of vulnerable parts is longer and performance is stable.

Horizontal triplex reciprocating single acting piston pump		
Stroke (mm)	80	
Cylinder diameter (mm)	85	
Flow (L/min)	500	250
Pressure (MPa)	3.5	7
Input speed (r/min)	765	382
Input power (KW)	37	
Dimensions (mm)	929 × 948 × 969	
Weight (kg)	600	
Hydraulic motor model	SAI2-350-170	
Hydraulic motor pressure (MPa)	20	
Maximum motor flow (L/min)	147	

The product specifications and images provided may change due to design improvements and upgrades. Please feel free to inquire for more information.

DXB-500 Outline Dimension Drawing



DXB-500/10 (Hydraulic Motor Driven)

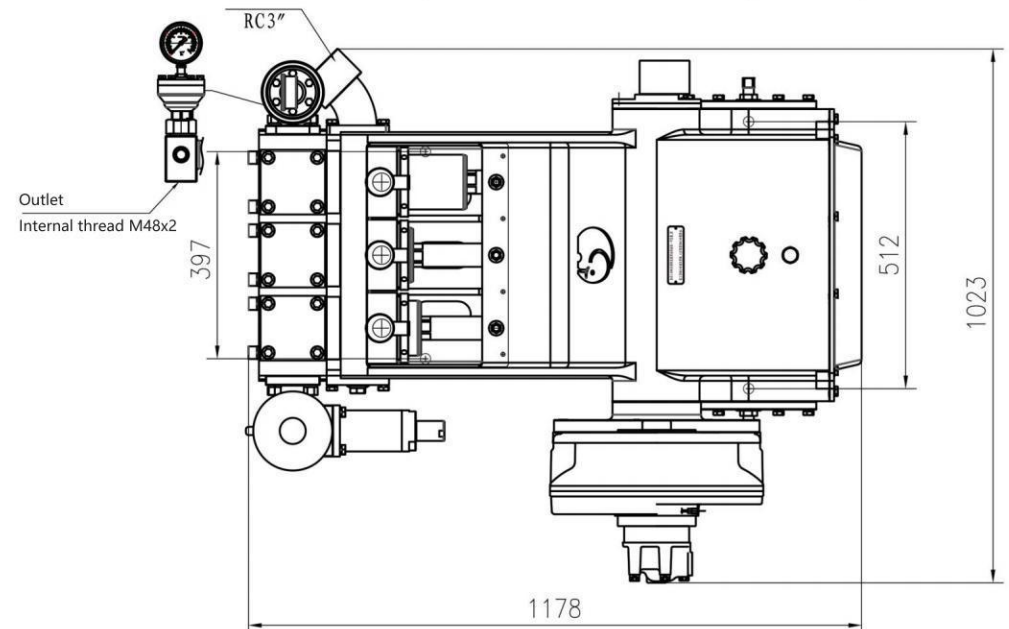
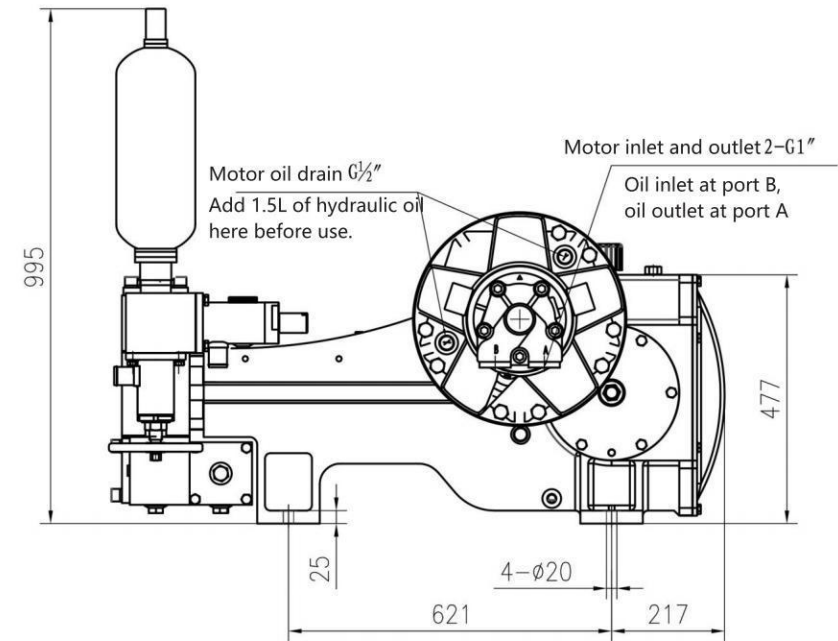


The DXB-500/10 reciprocating pump is a horizontal triplex reciprocating single-acting plunger pump. It is driven by a high-displacement hydraulic motor and mainly used for matching with tunnel drilling machines. It can also be used for other purposes such as grouting, mine drainage, and long-distance water delivery. This pump can adjust the flow rate by remote hydraulic motor flow control, changing the traditional manual shifting operating mode. The pump adopts new concepts and structures. The one-way valve uses Vanaar (with high volumetric efficiency and low working noise), with a compact structure, beautiful appearance, convenient installation and maintenance, long service life of vulnerable parts and stable performance.

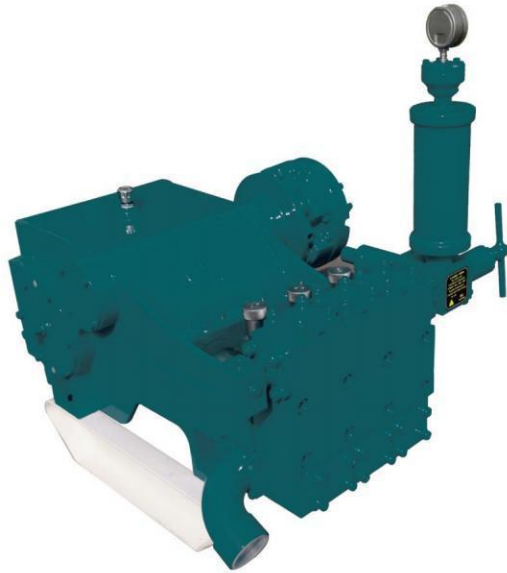
Horizontal triplex reciprocating single acting piston pump		
Stroke (mm)		135
Cylinder diameter (mm)		100
Flow (L/min)		500
Pressure (MPa)		10
Input speed (r/min)		700
Input power (KW)		100
Dimensions (mm)		1178 × 1023 × 995
Weight (kg)		850
Hydraulic motor model		SAI 4-400
Hydraulic motor pressure (MPa)		23
Maximum motor flow (L/min)		300

The product specifications and images provided may change due to design improvements and upgrades. Please feel free to inquire for more information.

DXB-500/10 Outline Dimension Drawing



DXB-600 (Hydraulic Motor Driven)

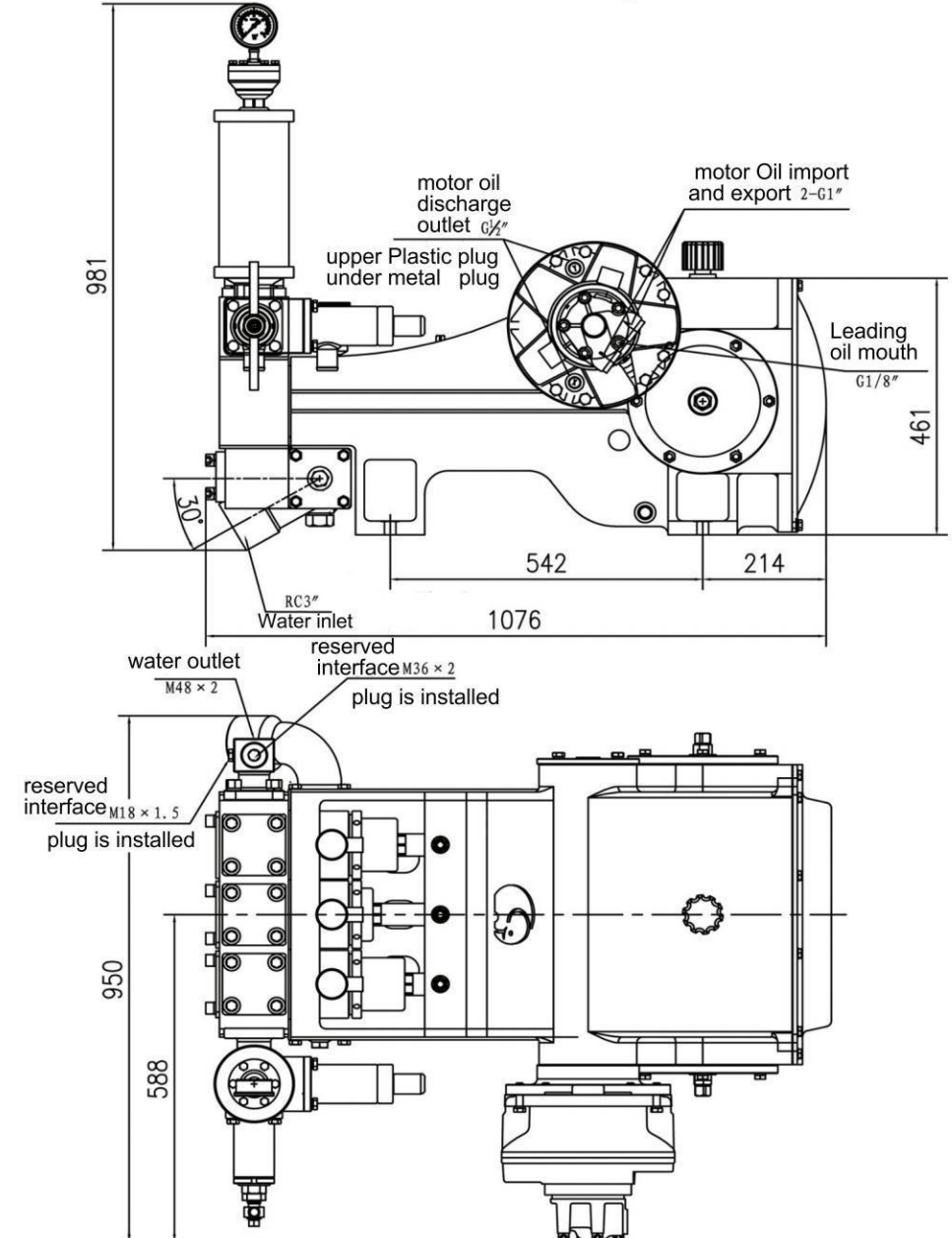


The DXB-600 reciprocating pump is a horizontal triplex reciprocating single-acting plunger pump, driven by a dual displacement hydraulic motor. It is mainly used in conjunction with non-excavation drilling rigs weighing around 70 tons, and can also be used for other purposes such as grouting, mine drainage, and long distance water delivery. The pump has two flow rates and two pressures, and shifting operations are achieved by remote adjustment of the hydraulic motor flow rate, changing the traditional manual shifting mode. The pump adopts a new concept and structure; the one-way valve adopts a Vannell design (with high volumetric efficiency and low working noise), with a compact structure and beautiful appearance, easy installation and maintenance, long service life for vulnerable parts, and stable performance.

Horizontal triplex reciprocating single acting piston pump		
Stroke (mm)	110	
Cylinder diameter (mm)	95	
Flow (L/min)	600	300
Pressure (MPa)	4	8
Input speed (r/min)	880	440
Input power (KW)	48	
Dimensions (mm)	1085×950×981	
Weight (kg)	710	
Hydraulic motor model	SA12-350-170	
Hydraulic motor pressure (MPa)	20	
Maximum motor flow (L/min)	170	

The product specifications and images provided may change due to design improvements and upgrades. Please feel free to inquire for more information.

DXB-600 Outline Dimension Drawing



DXBH-600 (Hydraulic Motor Driven)

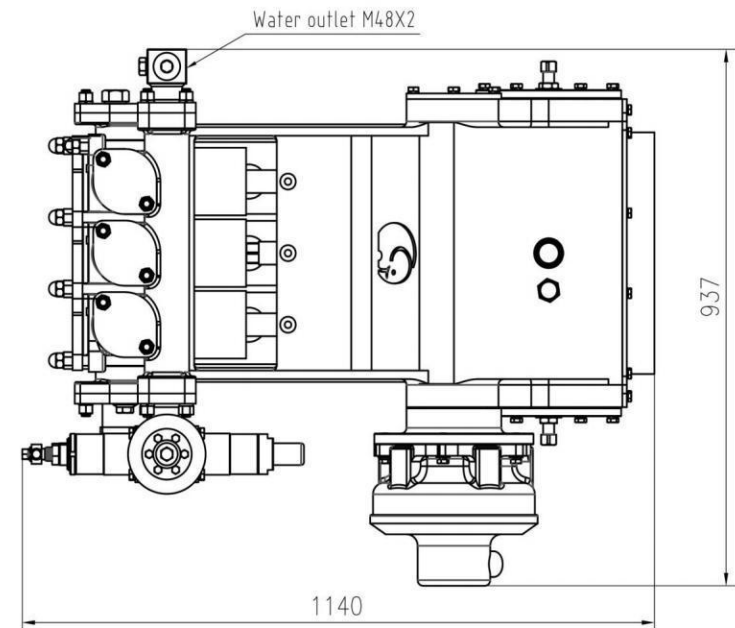
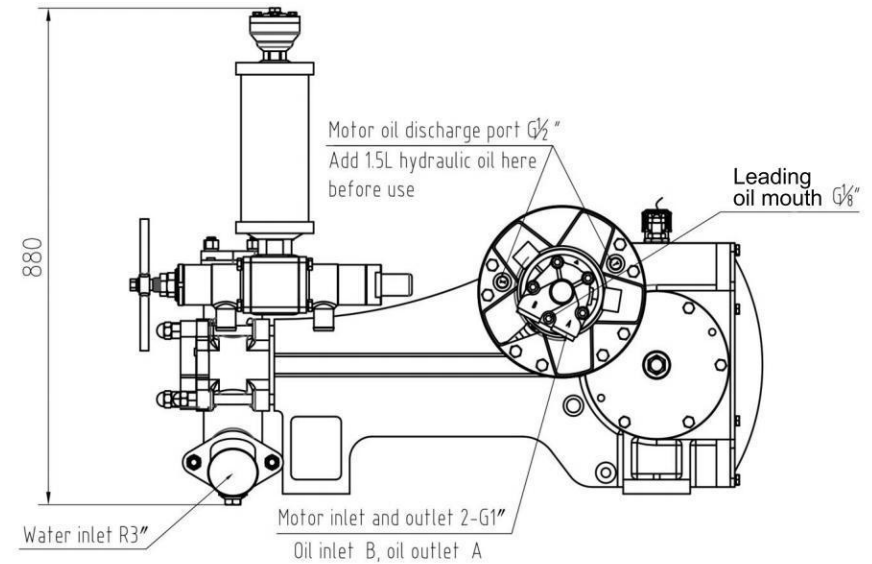


The DXBH-600 reciprocating pump is a horizontal, triplex, single-acting piston pump that uses a double-displacement hydraulic motor drive. It is mainly used in conjunction with non-excavation drilling rigs weighing around 50 tons, but can also be used for other purposes such as injection grouting, mine drainage, and long-distance water delivery. The pump has two flow rates and two pressures, and the shifting operation is achieved by remotely adjusting the hydraulic motor flow rate, changing the traditional manual shifting operation mode. This pump adopts new concepts and new structures; it has a compact structure, beautiful appearance, easy installation and maintenance, and longer life for vulnerable parts with stable performance.

Horizontal triplex reciprocating single acting piston pump		
Stroke (mm)	110	
Cylinder diameter (mm)	100	
Flow (L/min)	600	300
Pressure (MPa)	4	8
Input speed (r/min)	928	464
Input power (KW)	48	
Dimensions (mm)	1140 × 937 × 880	
Weight (kg)	635	
Hydraulic motor model	2-350-170	
Hydraulic motor pressure (MPa)	21	
Maximum motor flow (L/min)	180	

The product specifications and images provided may change due to design improvements and upgrades. Please feel free to inquire for more information.

DXBH-600 Outline Dimension Drawing



DXB-800 (Hydraulic Motor Driven)

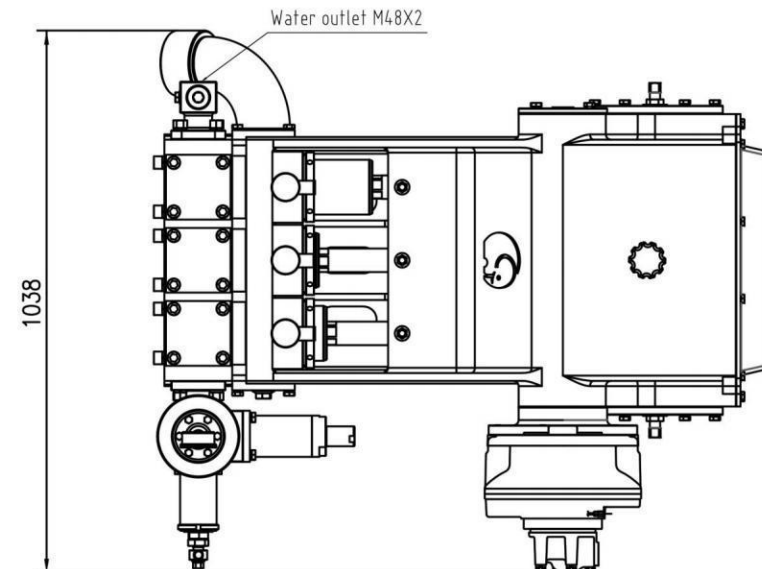
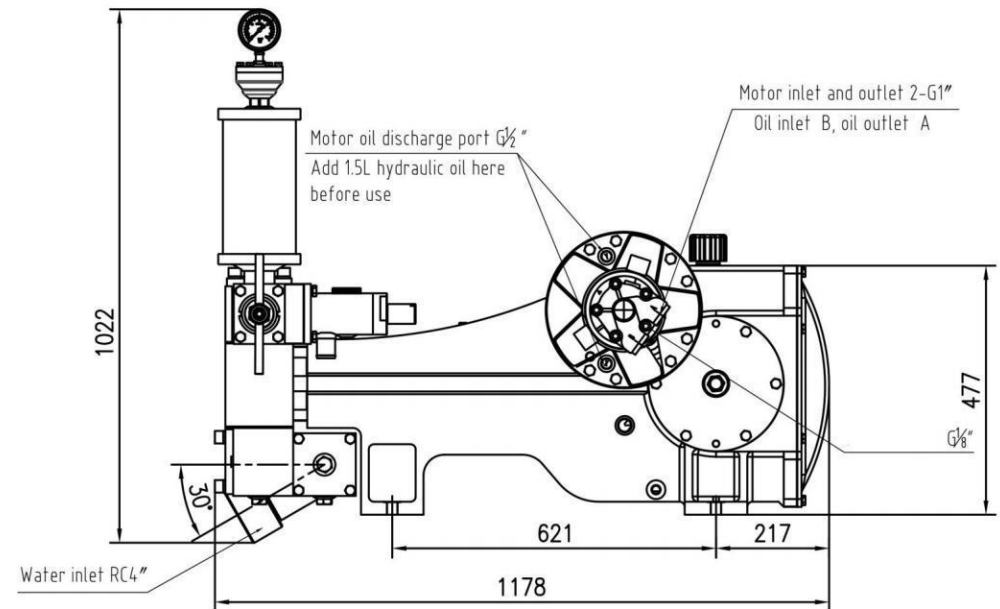


The DXB-800 reciprocating pump is a horizontal triplex reciprocating single-acting plunger pump, driven by a dual-displacement hydraulic motor. It is mainly used in conjunction with non-excavation drilling rigs of about 80 tons, as well as for other purposes such as grouting, mine drainage, and long-distance water delivery. The pump has two flow rates and two pressures, which can be achieved by remotely adjusting the hydraulic motor flow to achieve gear shifting operations, changing the traditional manual gear shifting operation mode. The pump adopts a new concept and new structure; the one-way valve adopts Vane (high volumetric efficiency, low working noise), compact structure, beautiful appearance, easy installation and maintenance, long service life of vulnerable parts, and stable performance.

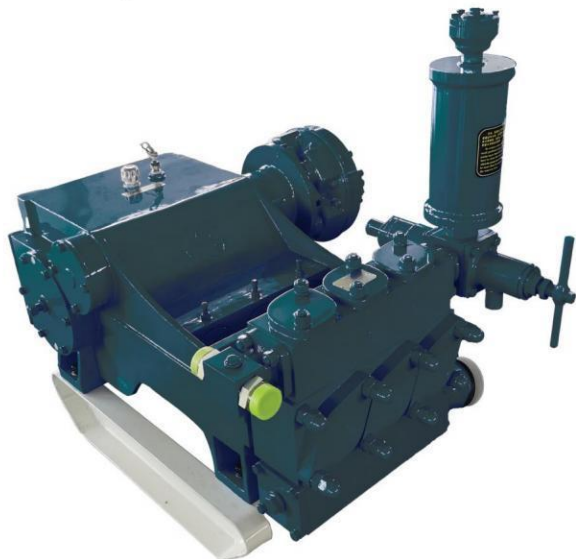
Horizontal triplex reciprocating single acting piston pump		
Stroke (mm)	135	
Cylinder diameter (mm)	105	
Flow (L/min)	800	400
Pressure (MPa)	4	8
Input speed (r/min)	1170	585
Input power (KW)	64	
Dimensions (mm)	1178 × 1038 × 1022	
Weight (kg)	820	
Hydraulic motor model	SAI2-350-170	
Hydraulic motor pressure (MPa)	20	
Maximum motor flow (L/min)	220	

The product specifications and images provided may change due to design improvements and upgrades. Please feel free to inquire for more information.

DXB-800 Outline Dimension Drawin



DXBH-800 (Hydraulic Motor Driven)

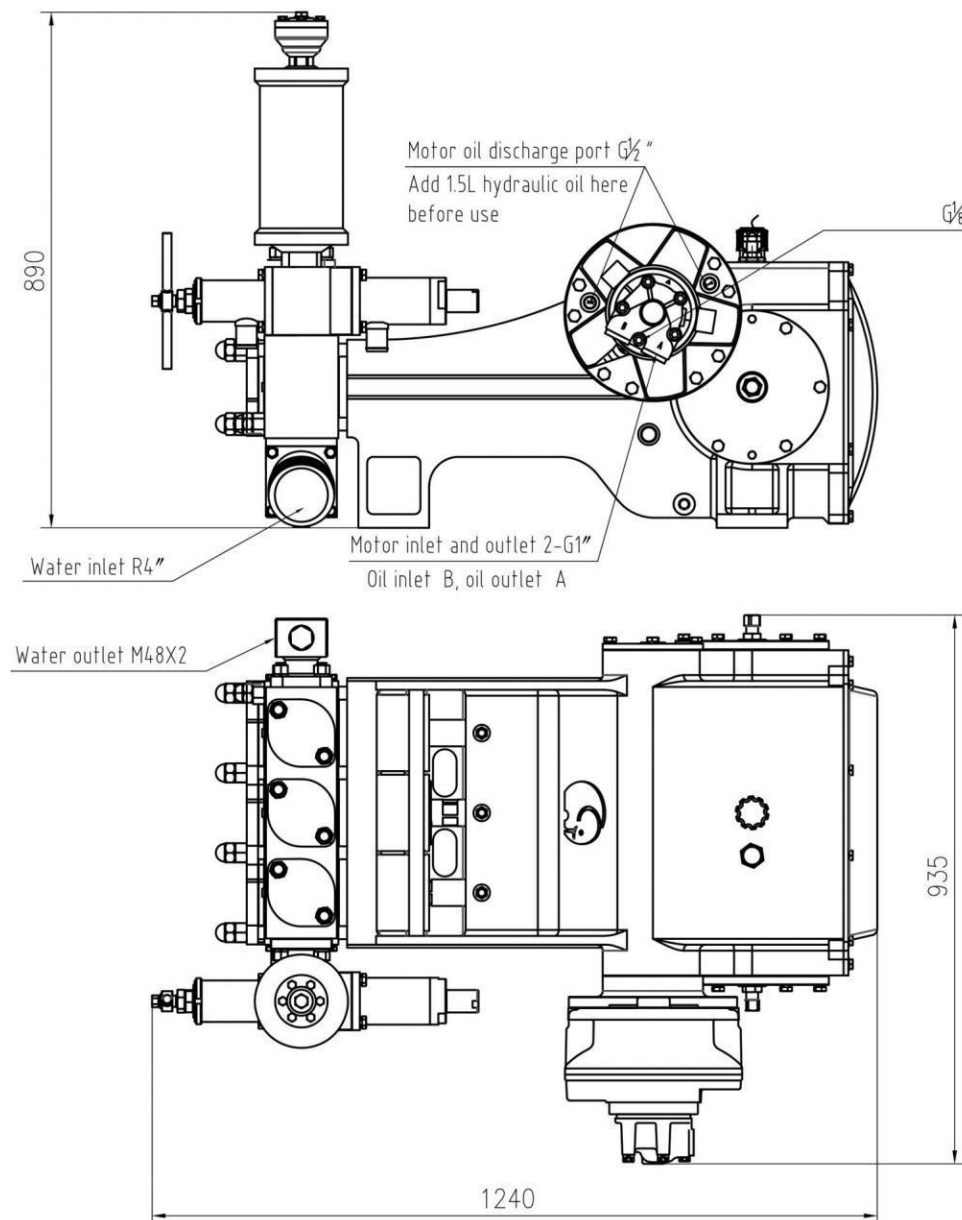


The DXBH-800 reciprocating pump is a horizontal triplex single-acting piston pump that uses a dual displacement hydraulic motor for driving. It is mainly used in conjunction with non-excavation drilling machines of around 65 tons, and can also be used for other applications such as grouting, mine drainage, and long-distance water delivery. The pump has two flow rates and two pressures, which can be changed by remote adjustment of the hydraulic motor flow, enabling shift operations and changing the traditional manual shift mode. The pump employs a new concept and structure, featuring compact design, attractive appearance, convenient installation and maintenance, long life for vulnerable parts, and stable performance.

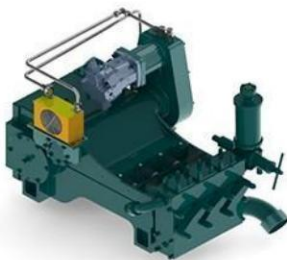
Horizontal triplex reciprocating single acting piston pump		
Stroke (mm)	110	
Cylinder diameter (mm)	110	
Flow (L/min)	800	400
Pressure (MPa)	4	8
Input speed (r/min)	1200	600
Input power (KW)	64	
Dimensions (mm)	1240 × 935 × 890	
Weight (kg)	730	
Hydraulic motor model	2-350-170	
Hydraulic motor pressure (MPa)	21	
Maximum motor flow (L/min)	230	

The product specifications and images provided may change due to design improvements and upgrades. Please feel free to inquire for more information.

DXBH-800 Outline Dimension Drawing



DXBH-1000Y

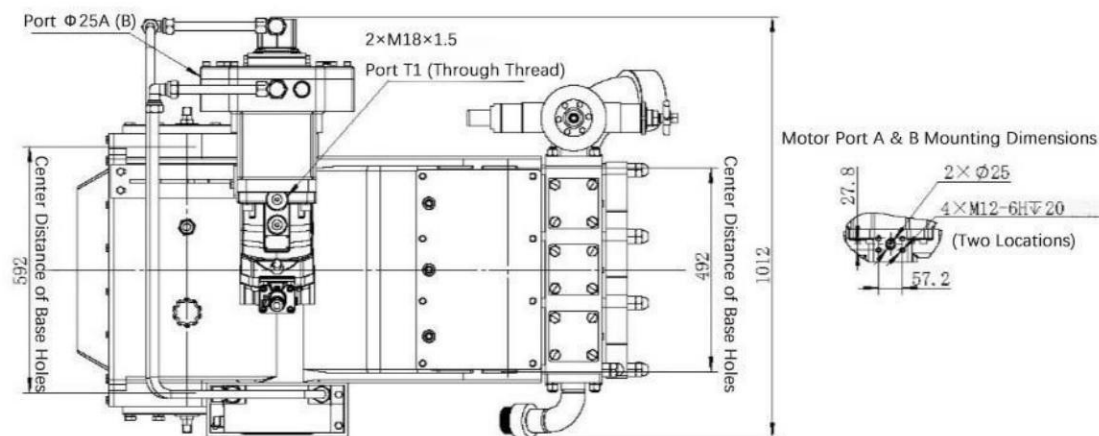
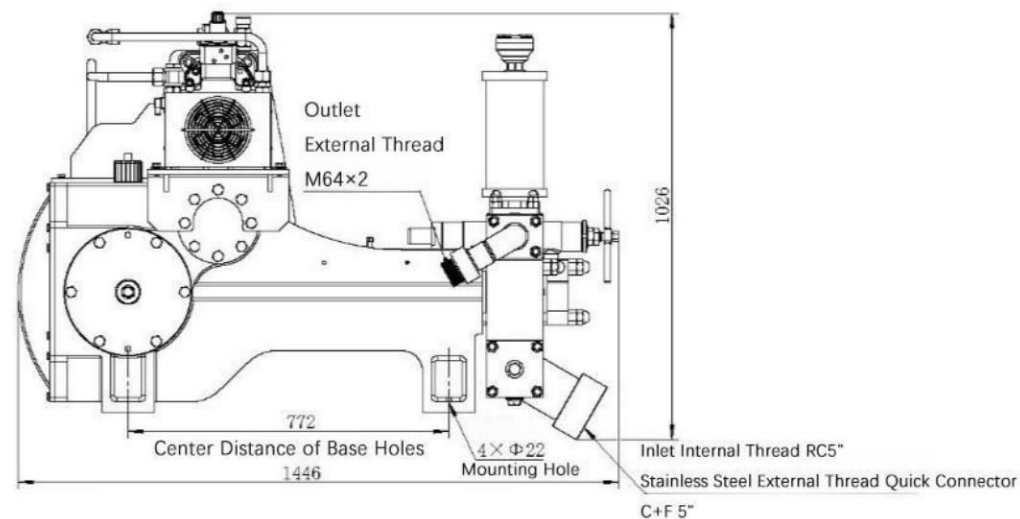


The DXBH-1000Y reciprocating pump is a horizontal triplex single-acting piston pump driven by a dual-displacement hydraulic motor. It is primarily designed for use with 100-ton trenchless drilling rigs but can also be employed in other applications such as grouting, mine drainage, and long-distance water delivery. This pump features two flow rates and two pressure levels, enabling gear shifting operations through remote adjustment of the hydraulic motor's flow rate, replacing traditional manual shifting methods. With innovative design and advanced structure, the pump incorporates high-efficiency poppet valves (offering high volumetric efficiency and low operational noise). It boasts a compact design, aesthetically pleasing appearance, easy installation and maintenance, extended service life for wear-prone components, and stable performance.

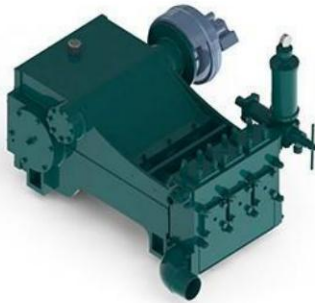
Horizontal triplex reciprocating single acting piston pump	
Stroke(mm)	140
Cylinder diameter(mm)	115
Pump speed(r/min)	232 116
Flow(L/min)	1000 500
Pressure(Mpa)	4 8
Motor speed (r/min)	4600 3000
Maximum suction height (m)	107 55
Input power(Kw)	80
Inlet connection	Rc 5" Quick Connect
Outlet connection	M64 x 2
Dimensions(mm)	1446 x 1012 x 1026
Weight(kg)	1281
Hydraulic motor model	L6VM107E22/63W-VZB020B-0550
Hydraulic motor rated pressure (MPa)	35
Maximum motor flow(L/min)	321

The product specifications and images provided may change due to design improvements and upgrades. Please feel free to inquire for more information.

DXBH-1000Y Outline Dimension Drawing



DXBH-1200

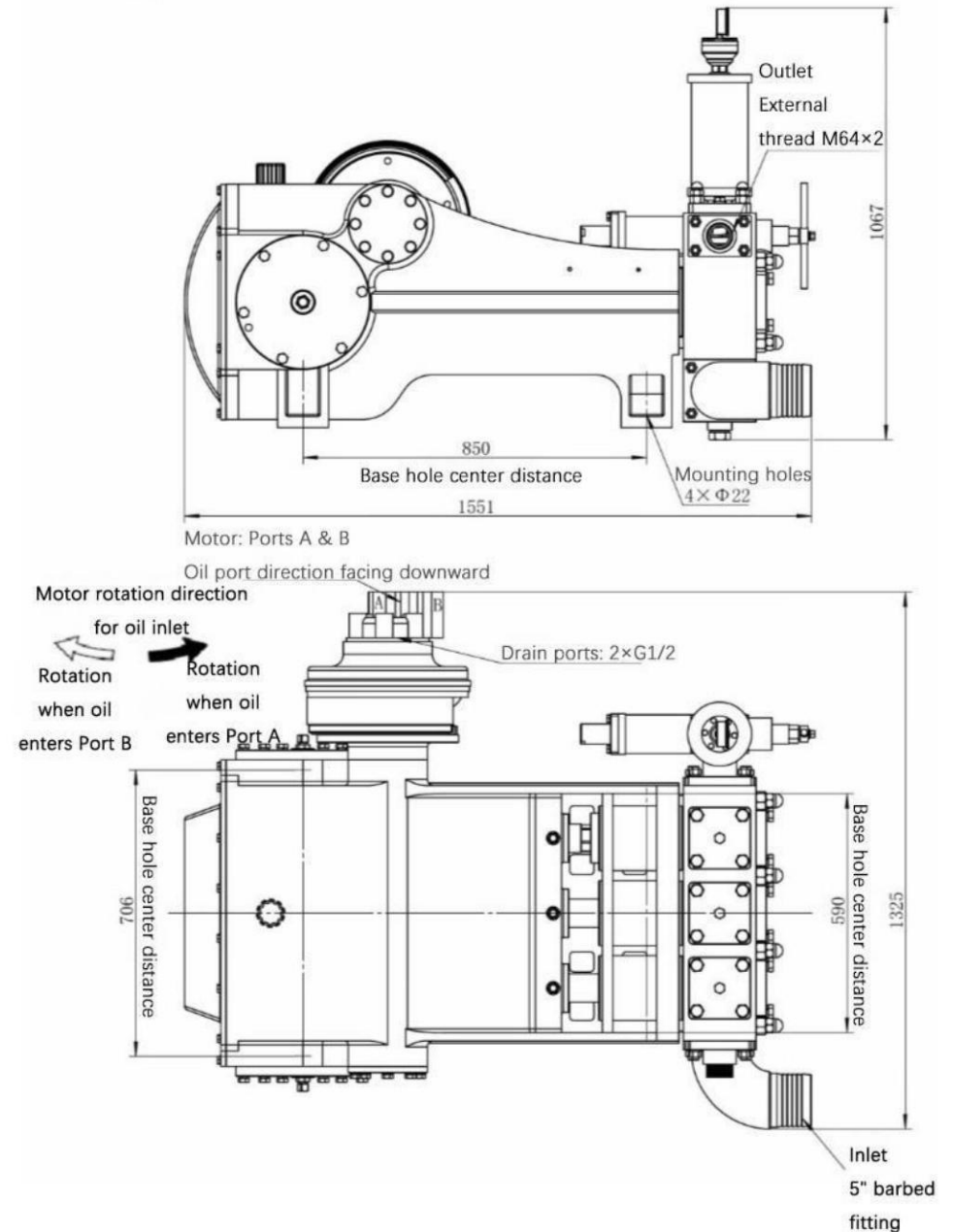


The DXBH-1200 reciprocating pump is a horizontal triplex single-acting piston pump driven by a dual-displacement hydraulic motor. It is primarily designed for use with 150-ton trenchless drilling rigs but can also be employed for other applications such as grouting, mine drainage, and long-distance water delivery. This pump features two flow rates and two pressure settings, enabling gear shifting operations through remote adjustment of the hydraulic motor's flow rate, replacing traditional manual shifting methods. With innovative design and advanced structure, the pump incorporates high-efficiency valves (delivering high volumetric efficiency and low operational noise). It boasts a compact design, aesthetically pleasing appearance, easy installation and maintenance, extended service life for wear-prone parts, and stable performance.

Horizontal triplex reciprocating single acting piston pump	
Stroke(mm)	150
Cylinder diameter(mm)	125
Flow(L/min)	1200 600
Pressure(Mpa)	4 8
Motor speed (r/min)	1075 540
Motor displacement (ml/r)	246 493
Input power(Kw)	100
Maximum suction height (m)	2.5
Inlet connection	Φ 130
Outlet connection	M64 × 2
Dimensions(mm)	1551 × 1325 × 1067
Weight(kg)	1596
Motor model	XHBD4-500/250IDD90
Hydraulic motor model	1750/3500
Hydraulic motor rated pressure (MPa)	25
Maximum motor flow(L/min)	295

The product specifications and images provided may change due to design improvements and upgrades. Please feel free to inquire for more information.

DXBH-1200 Outline Dimension Drawing





DBW-100 (Motor power)



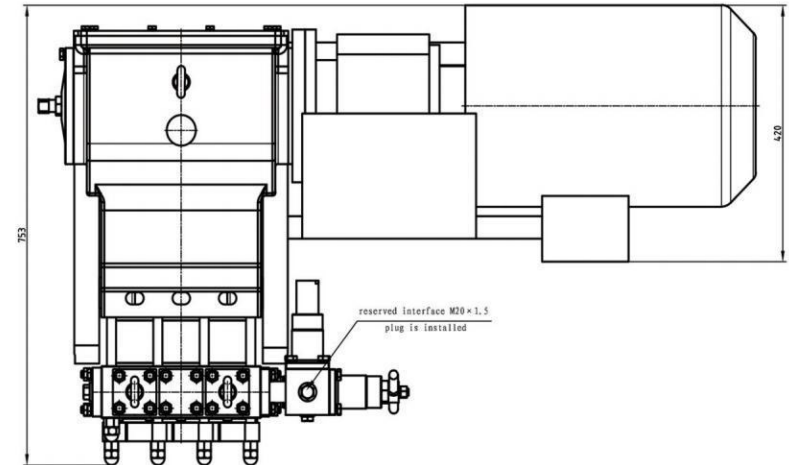
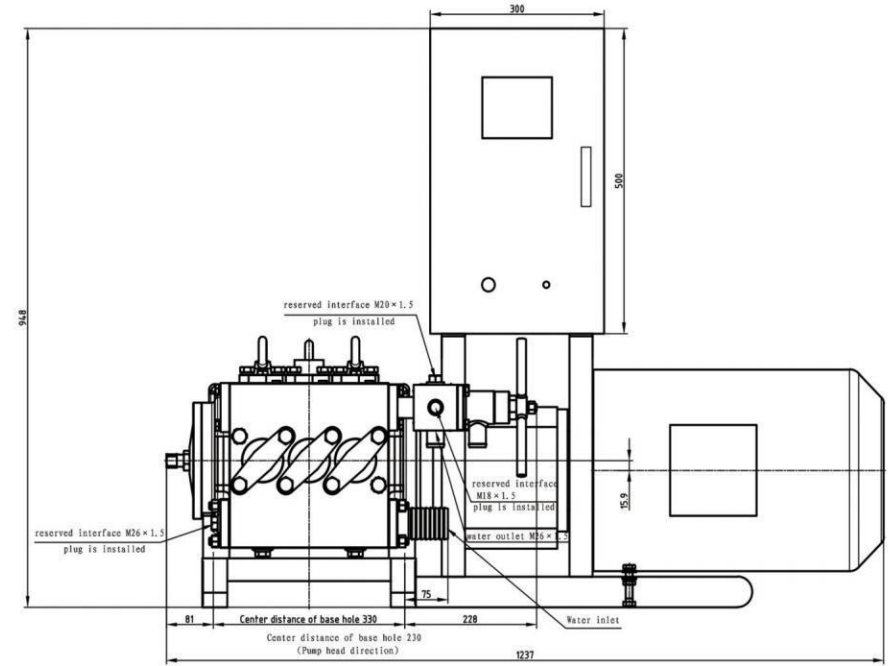
The DBW-100 reciprocating pump is a horizontal triplex reciprocating single-acting piston pump, driven by a variable frequency electric motor through a coupling reduction gear. It is mainly used for conveying flushing fluid to the drill hole during geological core drilling, and can also be used for other purposes such as grouting, sewage discharge, and long-distance water delivery. It can be adapted to different diameters of drilling and backhaul. The design incorporates new concepts, new structures, new materials, and new processes; it has a compact structure, light weight, small size, and beautiful appearance; it is easy to install and maintain; and has the characteristics of high output pressure, long service life of wearing parts, and stable performance.

Horizontal triplex reciprocating single acting piston pump		
Stroke (mm)		60
Cylinder diameter (mm)		55
Flow (L/min)		100
Pressure (MPa)		5
Input speed (r/min)		240
Input power (KW)		10
Dimensions (mm)		1237 × 753 × 948
Weight (kg)		350
Motor model		RF77YVP160M4
Motor power (KW)		11

The product specifications and images provided may change due to design improvements and upgrades. Please feel free to inquire for more information.



DBW-100 Outline Dimension Drawing



DBW-100Q

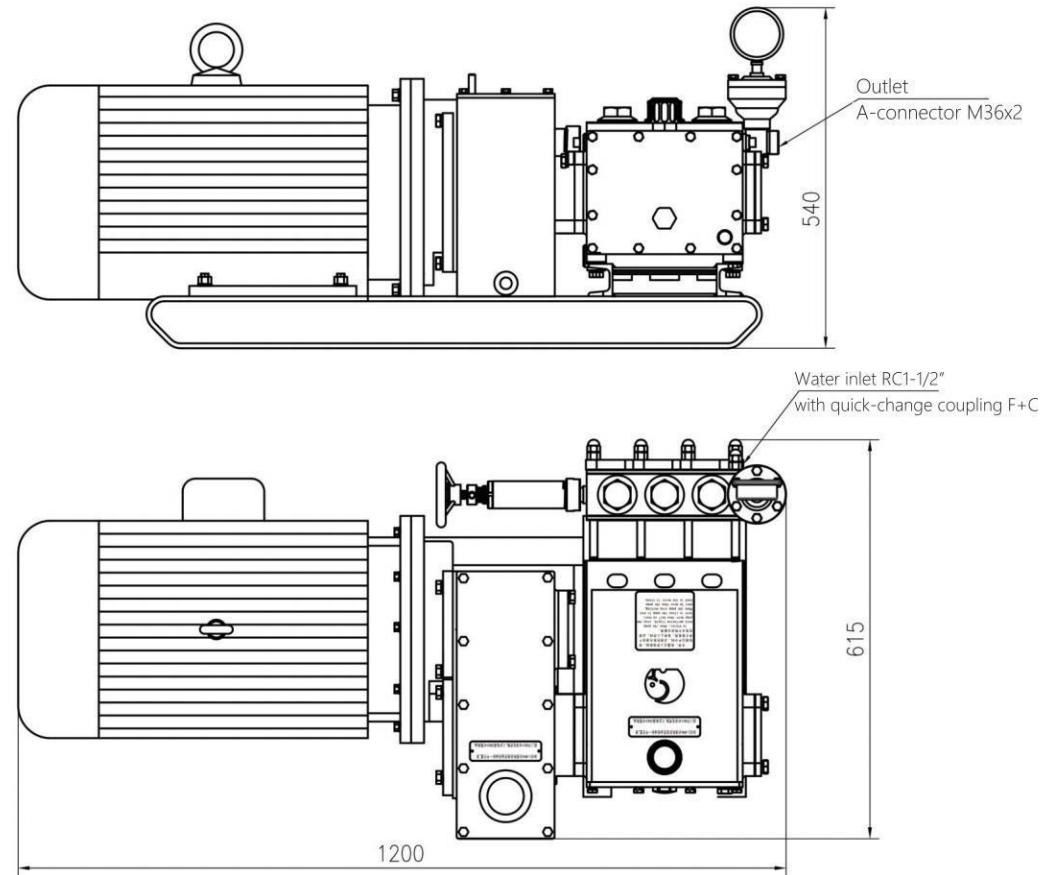


The DBW-100Q reciprocating pump is a horizontal triplex reciprocating single-acting piston pump. It is driven by a three-phase asynchronous motor through a gearbox. It is mainly used to deliver flushing fluid to the drilling hole in geological core drilling, and can also be used for other purposes such as grouting, sewage discharge, and long-distance water delivery. It can be used for drilling and backhaul of different diameters. In the design, new concepts, new structures, new materials, and new processes are adopted. The structure is compact, light in weight, small in size, and beautiful in appearance. It is easy to install and maintain with high output pressure, long service life of vulnerable parts, and stable performance.

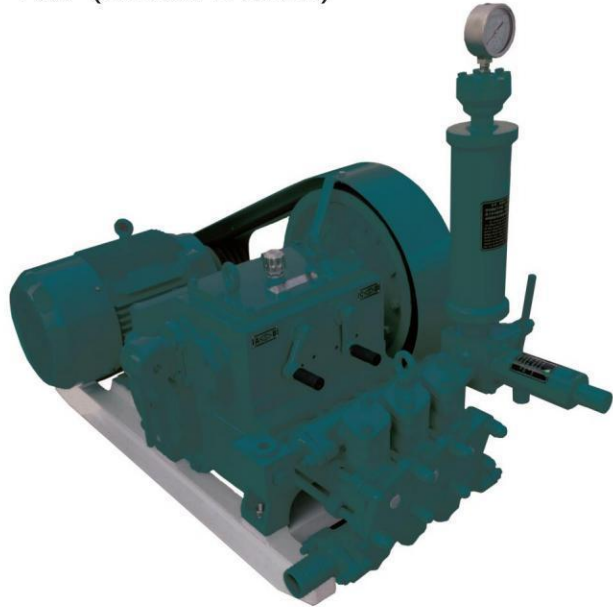
Horizontal triplex reciprocating single acting piston pump	
Stroke (mm)	48
Cylinder diameter (mm)	55
Flow (L/min)	100
Pressure (MPa)	5.5/7
Input speed (r/min)	295
Input power (KW)	14
Dimensions (mm)	1200×615×540
Weight (kg)	290/310
Motor model	Y160-4/B35
Motor power (KW)	11/15

The product specifications and images provided may change due to design improvements and upgrades. Please feel free to inquire for more information.

DBW-100Q Outline Dimension Drawing



DBW-160 (Motor Driven)

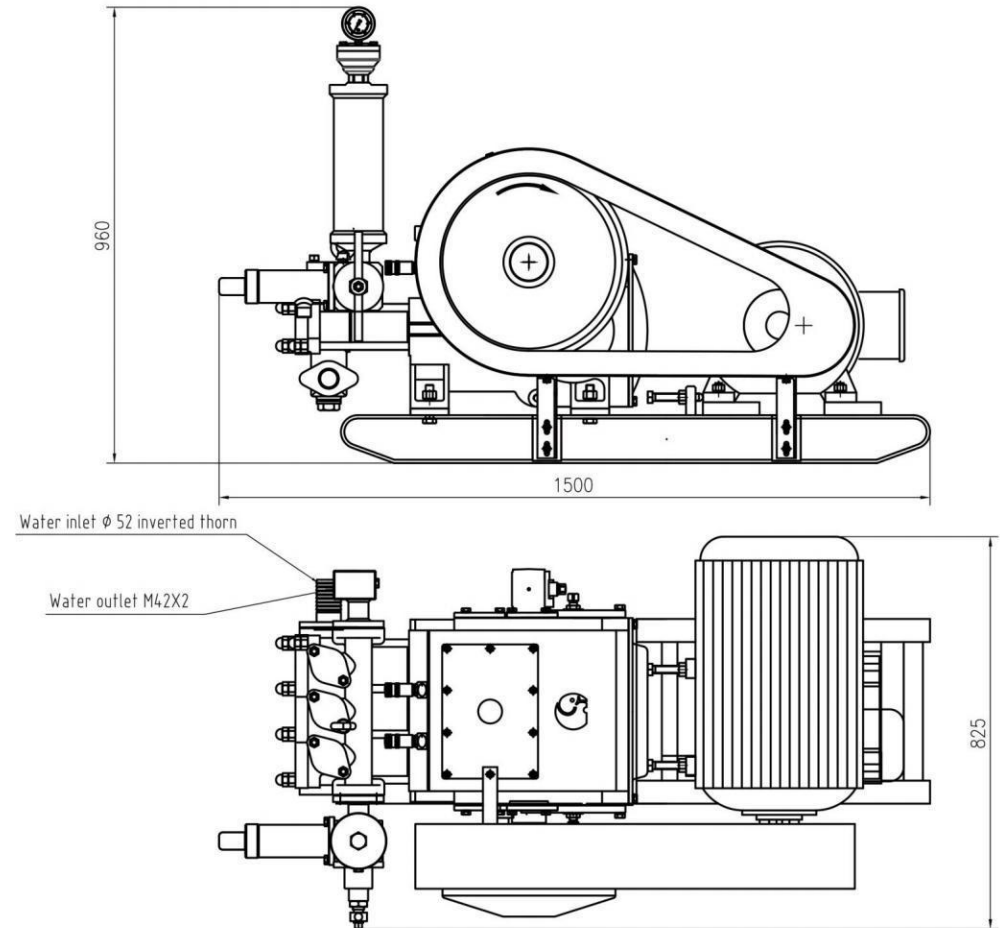


The DBW-160 reciprocating pump is a horizontal triplex reciprocating single-acting piston pump that is powered by electric motor. It is mainly used to convey flushing fluid into the drilling hole during geological core drilling, and can also be used for other applications such as grouting, sewage disposal, and long-distance water delivery. The pump has four flow rates and four pressures, with a wide range of flow rate and pressure variations to accommodate different borehole drilling and backflushing. In its design, new concepts, new structures, new materials, and new processes are adopted. The pump is compact in structure, light in weight, small in size, and aesthetically pleasing. It is easy to install and maintain and features high output pressure, long service life of wearing parts, and stable performance.

Horizontal triplex reciprocating single acting piston pump				
Stroke (mm)	70			
Cylinder diameter (mm)	70			
Flow (L/min)	160	107	67	44
Pressure (MPa)	2.7	4	6.5	10
Input speed (r/min)	540			
Input power (kW)	9			
Dimensions (mm)	1500×825×960			
Weight (kg)	508			
Motor model	YE3-160M-4			
Motor Power (kW)	11			

The product specifications and images provided may change due to design improvements and upgrades. Please feel free to inquire for more information.

DBW-160 Outline Dimension Drawing



DXBH-200E



The DXBH-200E reciprocating pump is a horizontal triplex single-acting piston pump, driven by a permanent magnet synchronous motor for high efficiency, energy savings, and environmental friendliness. It is primarily designed for use with 20-ton trenchless drilling rigs but can also be employed in other applications such as grouting, mine drainage, and long-distance water delivery. The pump features a wide range of adjustable flow rates and pressures, with remote stepless speed control via a controller, enabling constant power output during variations in flow and pressure. This eliminates the traditional manual gear-shifting operation mode. Designed with innovative concepts and a modern structure, the pump is compact, aesthetically pleasing, and easy to install and maintain. It offers extended service life for wear-prone parts and ensures stable performance.

Horizontal triplex reciprocating single acting piston pump	
Stroke(mm)	60
Cylinder diameter(mm)	70
Pump speed(r/min)	145~290
Flow(L/min)	100~200
Pressure((Mpa)	8~4
Input power(Kw)	15.4
Dimensions(mm)	825 × 831 × 775
Weight(kg)	370
Motor Model	TYC24-1750-L120M10
Rated Current / Maximum Current (A)	77.8/140
Rated Power / Peak Power (kW)	24/40.8
Rated Speed / Maximum Speed (r/min)	1750/3500

The product specifications and images provided may change due to design improvements and upgrades. Please feel free to inquire for more information.

DXBH-200E Outline Dimension Drawing

